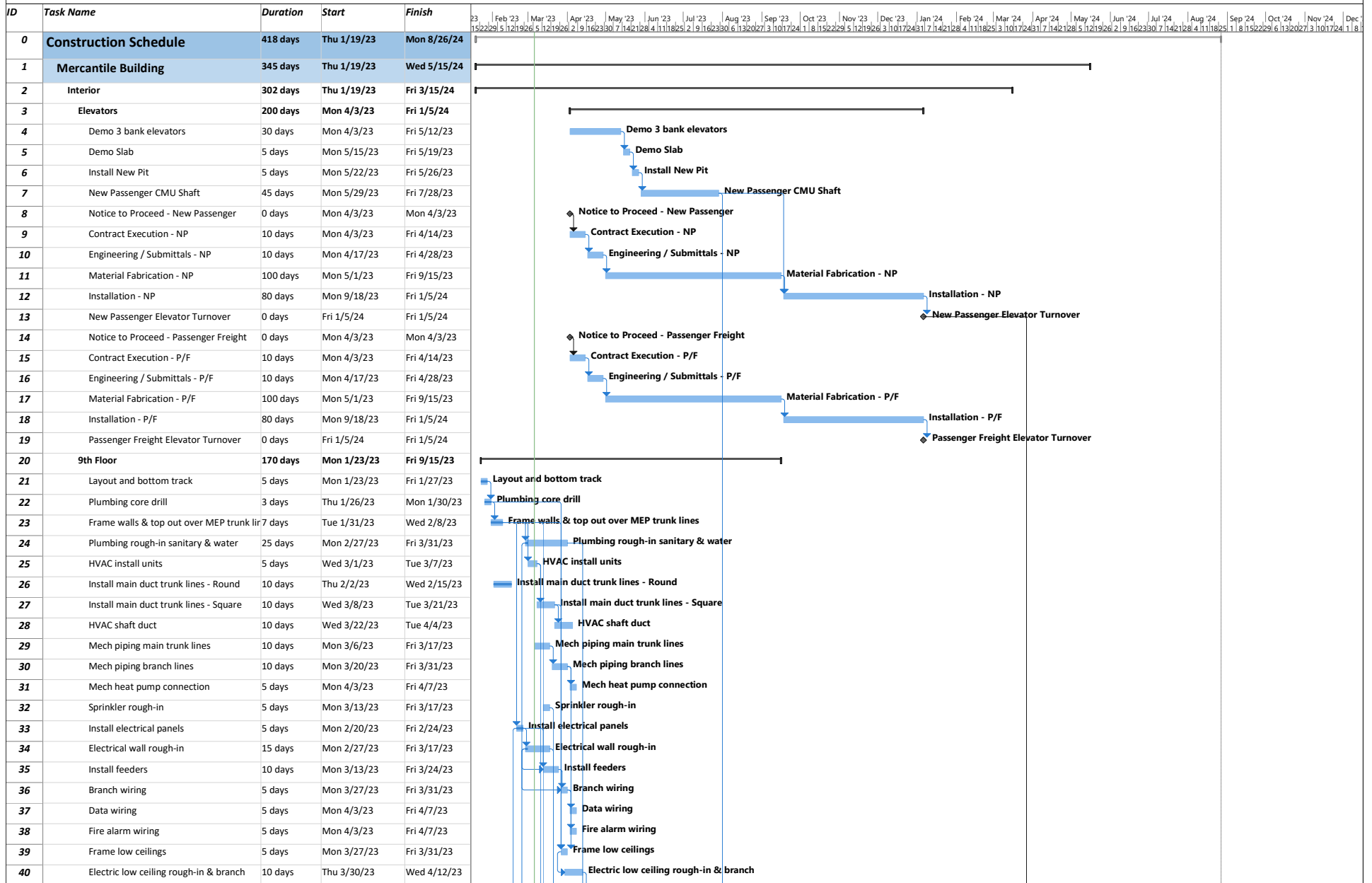


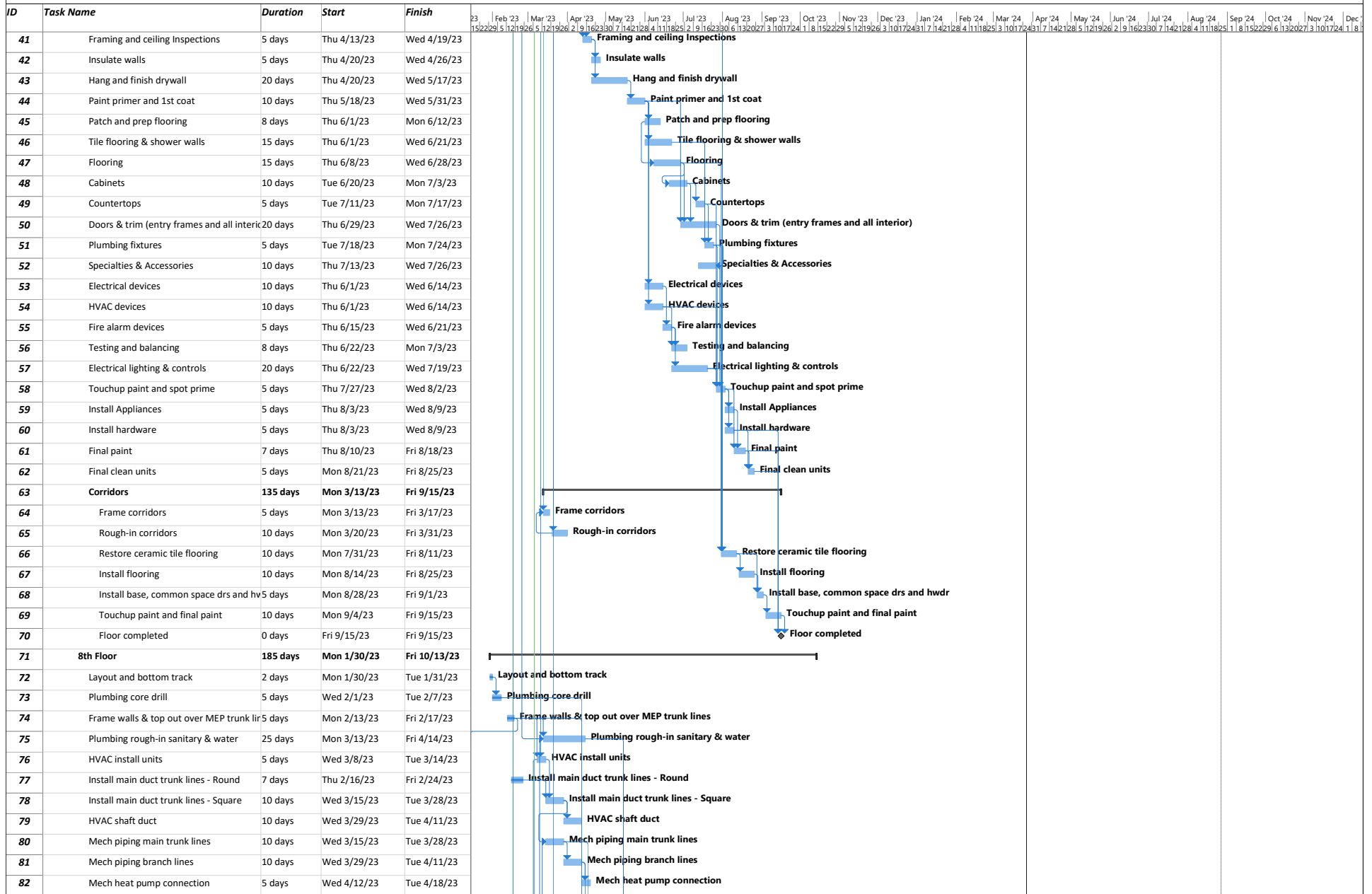
Mercantile Library & Formica Building
Construction Schedule 3/6/23



Project: Construction Schedule
Date: Mon 3/6/23

Task █ Milestone ◆ Summary ▬ Project Summary ▬ Critical █ Progress ▬

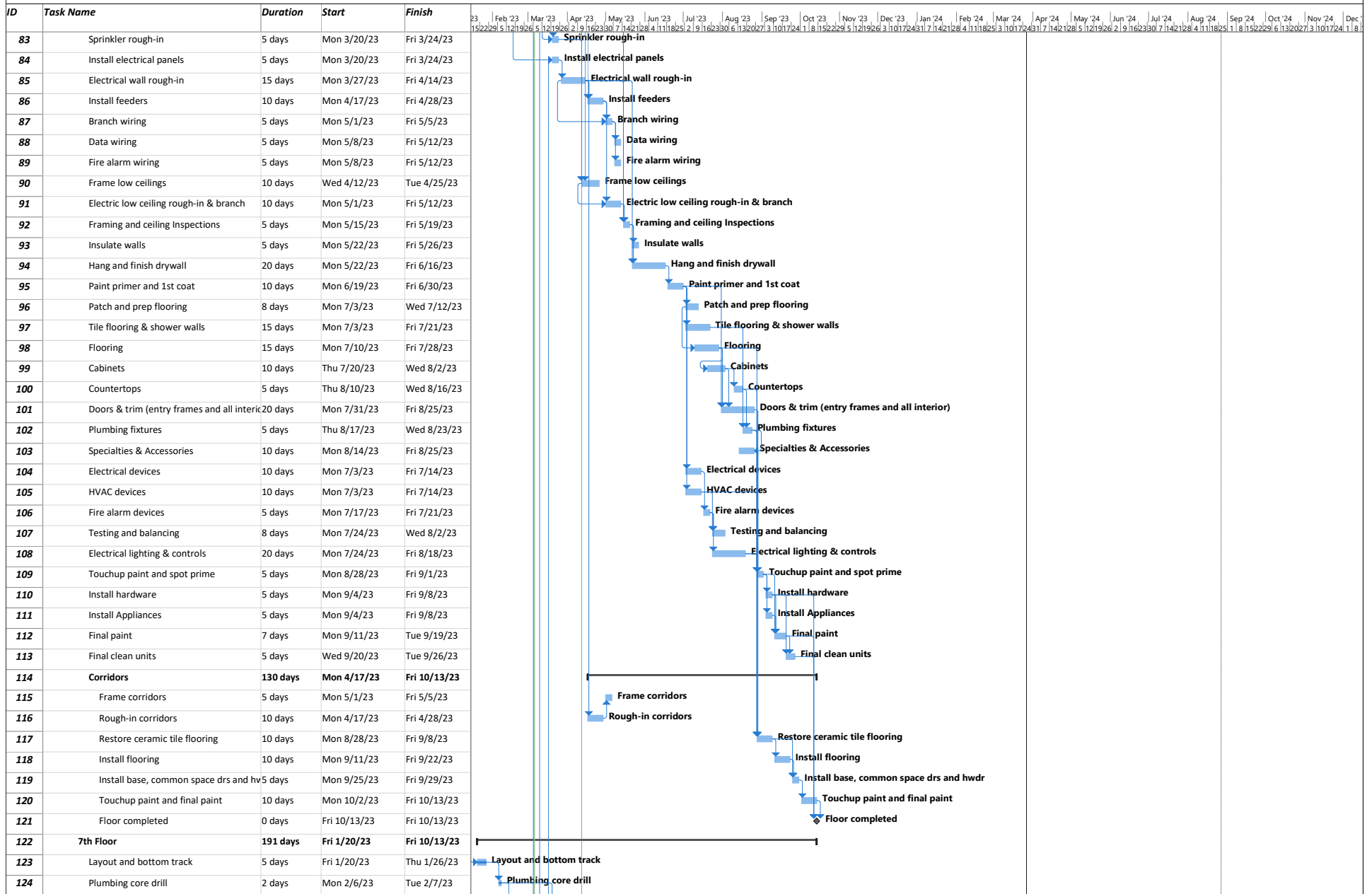
Mercantile Library & Formica Building
Construction Schedule 3/6/23



Project: Construction Schedule
Date: Mon 3/6/23

Task ■ Milestone ◆ Summary ▬ Project Summary ▬ Critical ▬ Progress ▬

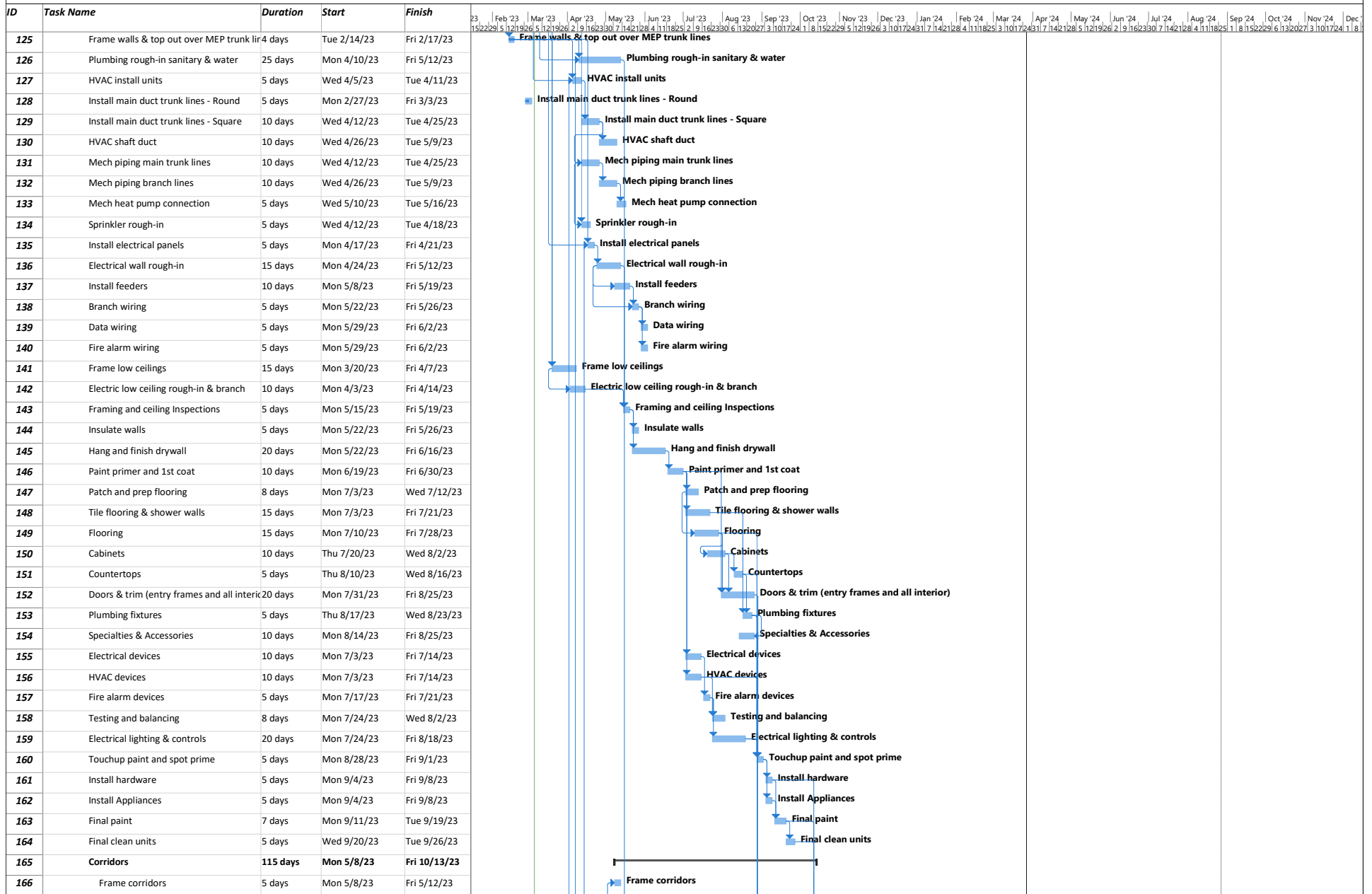
Mercantile Library & Formica Building
Construction Schedule 3/6/23



Project: Construction Schedule
Date: Mon 3/6/23

Task █ Milestone ◆ Summary ▬ Project Summary ▬ Critical █ Progress ▬

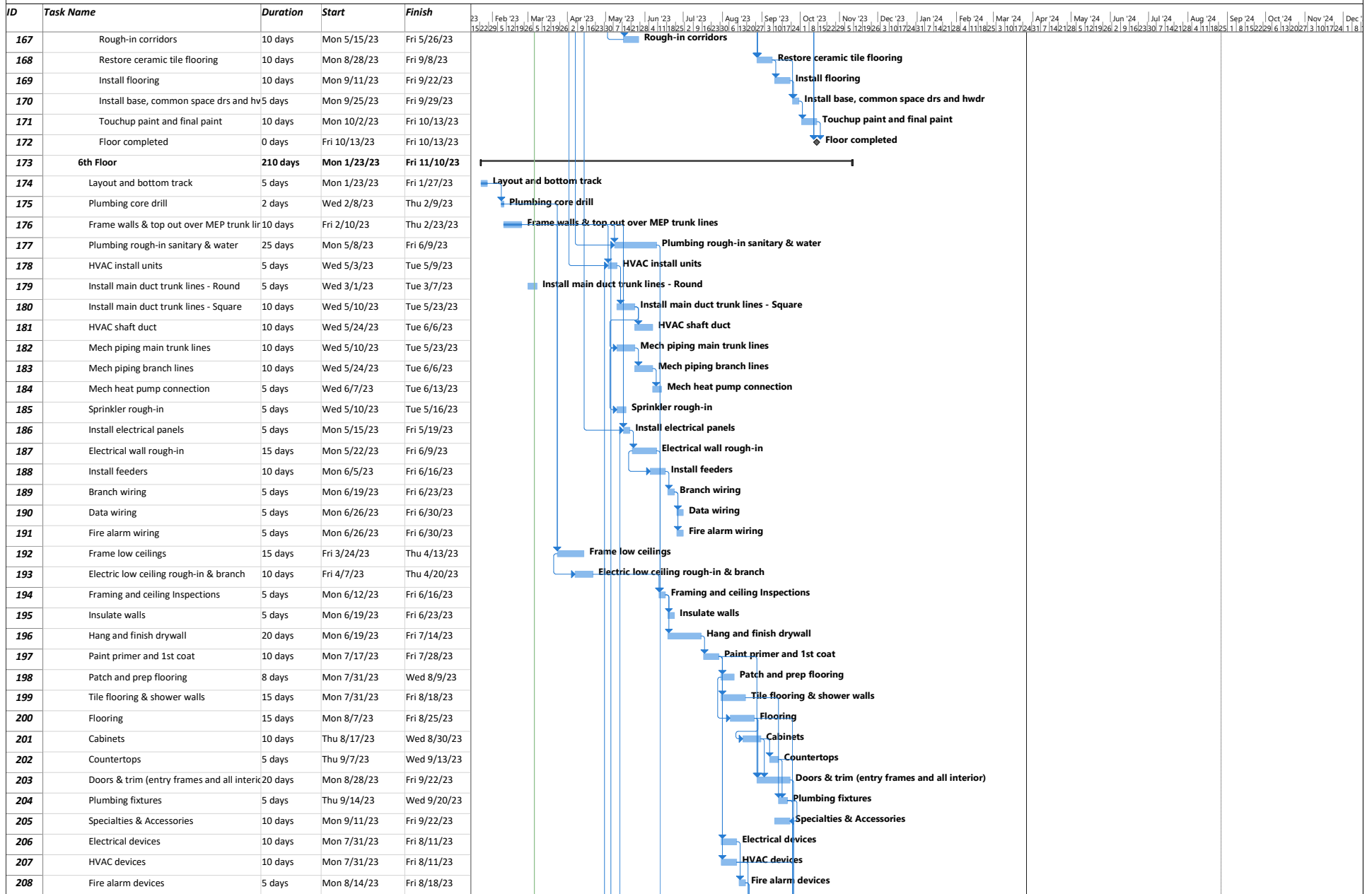
Mercantile Library & Formica Building
Construction Schedule 3/6/23



Project: Construction Schedule
Date: Mon 3/6/23

Task █ Milestone ◆ Summary ▬ Project Summary ▬ Critical █ Progress ▬

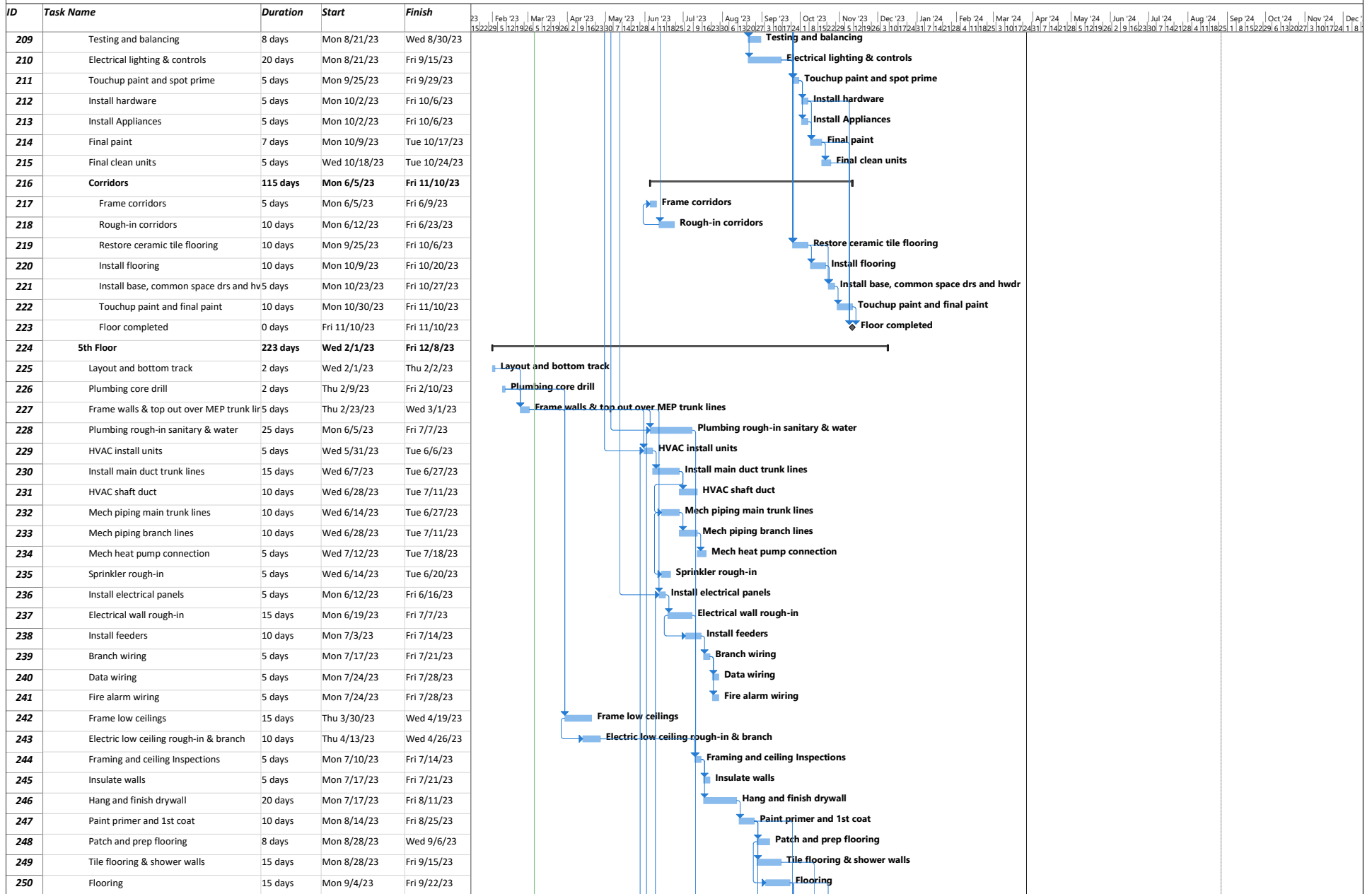
Mercantile Library & Formica Building
Construction Schedule 3/6/23



Project: Construction Schedule
Date: Mon 3/6/23

Task █ Milestone ◆ Summary ▬ Project Summary ▬ Critical █ Progress ▬

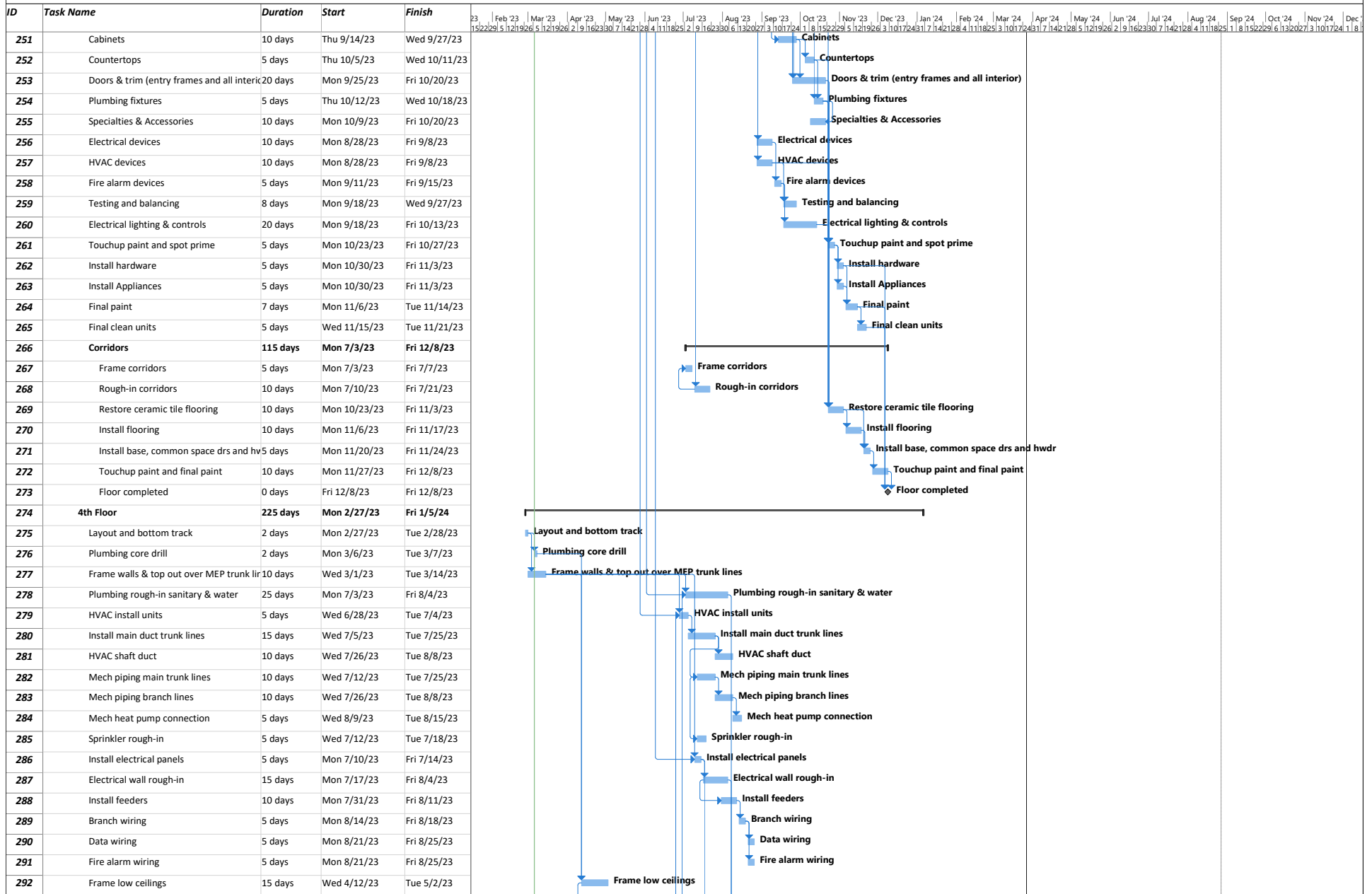
Mercantile Library & Formica Building
Construction Schedule 3/6/23



Project: Construction Schedule
Date: Mon 3/6/23



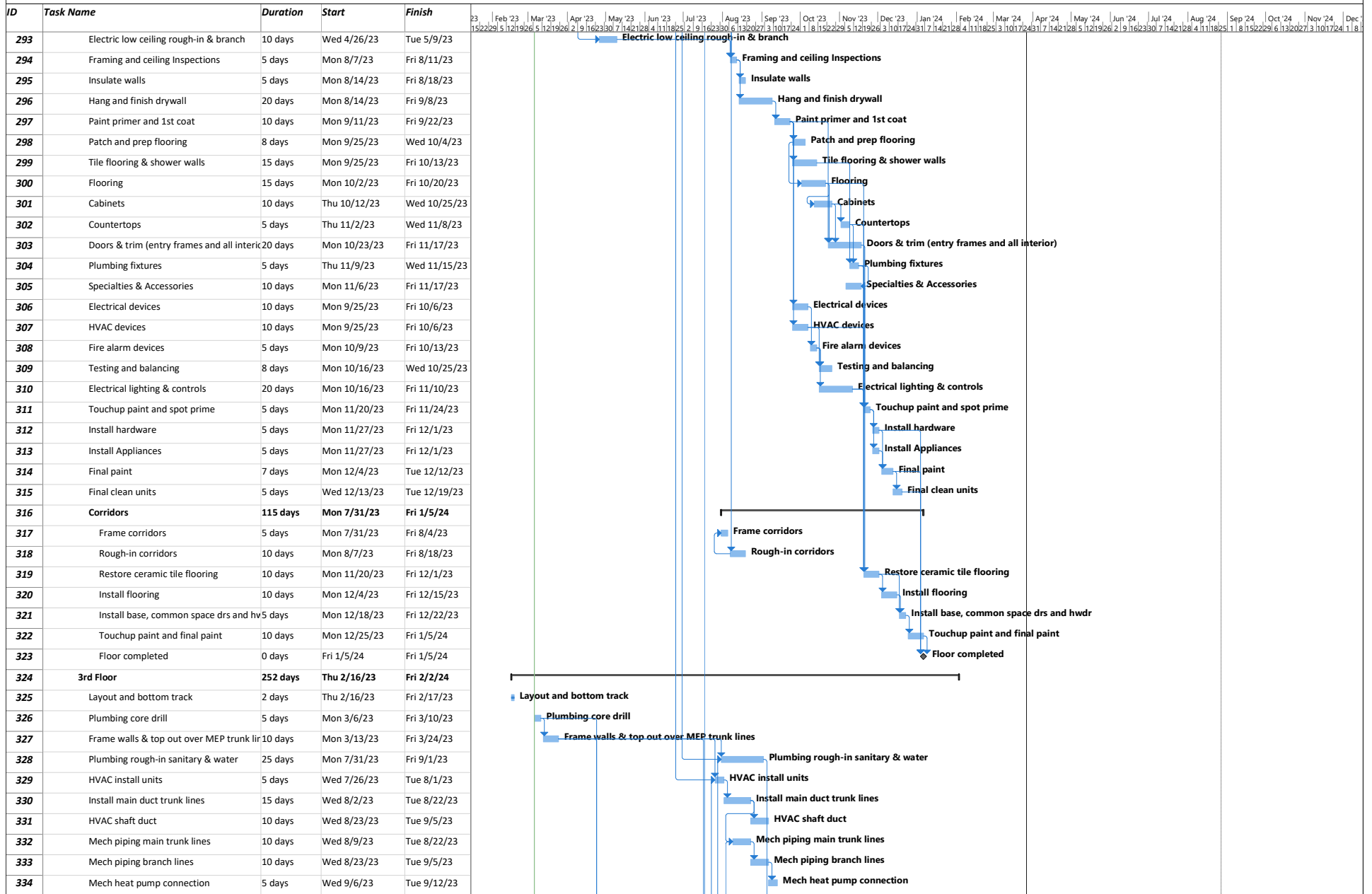
Mercantile Library & Formica Building
Construction Schedule 3/6/23



Project: Construction Schedule
Date: Mon 3/6/23

Task █ Milestone ◆ Summary ▬ Project Summary ▬ Critical █ Progress ▬

Mercantile Library & Formica Building
Construction Schedule 3/6/23



Project: Construction Schedule
Date: Mon 3/6/23

Task █ Milestone ◆ Summary — Project Summary — Critical █ Progress █

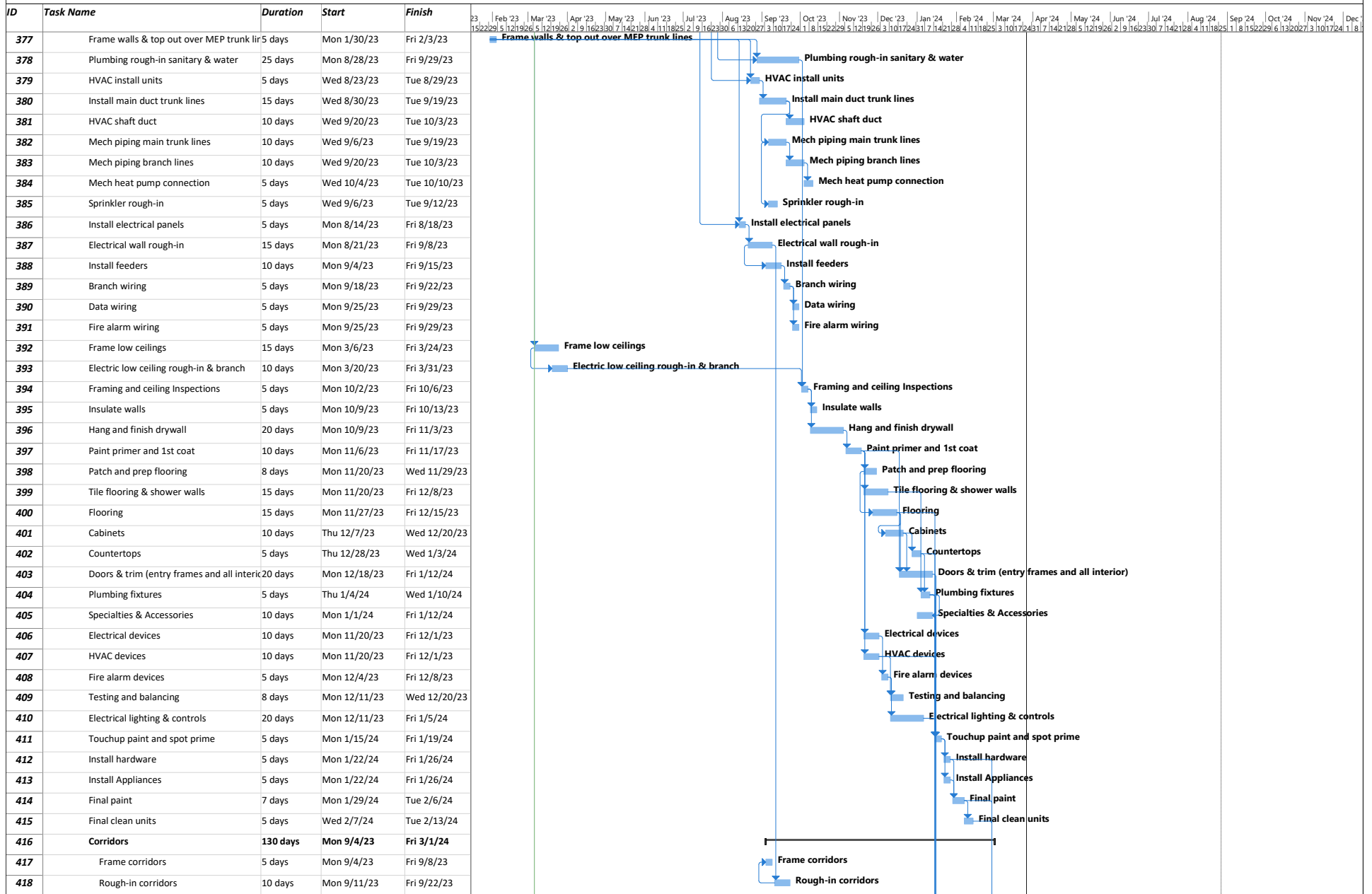
Mercantile Library & Formica Building
Construction Schedule 3/6/23

ID	Task Name	Duration	Start	Finish
335	Sprinkler rough-in	5 days	Wed 8/9/23	Tue 8/15/23
336	Install electrical panels	5 days	Mon 7/17/23	Fri 7/21/23
337	Electrical wall rough-in	15 days	Mon 7/24/23	Fri 8/11/23
338	Install feeders	10 days	Mon 8/7/23	Fri 8/18/23
339	Branch wiring	5 days	Mon 8/21/23	Fri 8/25/23
340	Data wiring	5 days	Mon 8/28/23	Fri 9/1/23
341	Fire alarm wiring	5 days	Mon 8/28/23	Fri 9/1/23
342	Frame low ceilings	15 days	Mon 4/24/23	Fri 5/12/23
343	Electric low ceiling rough-in & branch	10 days	Mon 5/8/23	Fri 5/19/23
344	Framing and ceiling inspections	5 days	Mon 9/4/23	Fri 9/8/23
345	Insulate walls	5 days	Mon 9/11/23	Fri 9/15/23
346	Hang and finish drywall	20 days	Mon 9/11/23	Fri 10/6/23
347	Paint primer and 1st coat	10 days	Mon 10/9/23	Fri 10/20/23
348	Patch and prep flooring	8 days	Mon 10/23/23	Wed 11/1/23
349	Tile flooring & shower walls	15 days	Mon 10/23/23	Fri 11/10/23
350	Flooring	15 days	Mon 10/30/23	Fri 11/17/23
351	Cabinets	10 days	Thu 11/9/23	Wed 11/22/23
352	Countertops	5 days	Thu 11/30/23	Wed 12/6/23
353	Doors & trim (entry frames and all interior)	20 days	Mon 11/20/23	Fri 12/15/23
354	Plumbing fixtures	5 days	Thu 12/7/23	Wed 12/13/23
355	Specialties & Accessories	10 days	Mon 12/4/23	Fri 12/15/23
356	Electrical devices	10 days	Mon 10/23/23	Fri 11/3/23
357	HVAC devices	10 days	Mon 10/23/23	Fri 11/3/23
358	Fire alarm devices	5 days	Mon 11/6/23	Fri 11/10/23
359	Testing and balancing	8 days	Mon 11/13/23	Wed 11/22/23
360	Electrical lighting & controls	20 days	Mon 11/13/23	Fri 12/8/23
361	Touchup paint and spot prime	5 days	Mon 12/18/23	Fri 12/22/23
362	Install hardware	5 days	Mon 12/25/23	Fri 12/29/23
363	Install Appliances	5 days	Mon 12/25/23	Fri 12/29/23
364	Final paint	7 days	Mon 1/1/24	Tue 1/9/24
365	Final clean units	5 days	Wed 1/10/24	Tue 1/16/24
366	Corridors	130 days	Mon 8/7/23	Fri 2/2/24
367	Frame corridors	5 days	Mon 8/7/23	Fri 8/11/23
368	Rough-in corridors	10 days	Mon 8/14/23	Fri 8/25/23
369	Restore ceramic tile flooring	10 days	Mon 12/18/23	Fri 12/29/23
370	Install flooring	10 days	Mon 1/1/24	Fri 1/12/24
371	Install base, common space drs and hv	5 days	Mon 1/15/24	Fri 1/19/24
372	Touchup paint and final paint	10 days	Mon 1/22/24	Fri 2/2/24
373	Floor completed	0 days	Fri 2/2/24	Fri 2/2/24
374	10th Floor	292 days	Thu 1/19/23	Fri 3/1/24
375	Layout and bottom track	2 days	Thu 1/19/23	Fri 1/20/23
376	Plumbing core drill	4 days	Thu 1/26/23	Tue 1/31/23

Project: Construction Schedule
Date: Mon 3/6/23

Task █ Milestone ◆ Summary ▬ Project Summary ▬ Critical █ Progress ▬

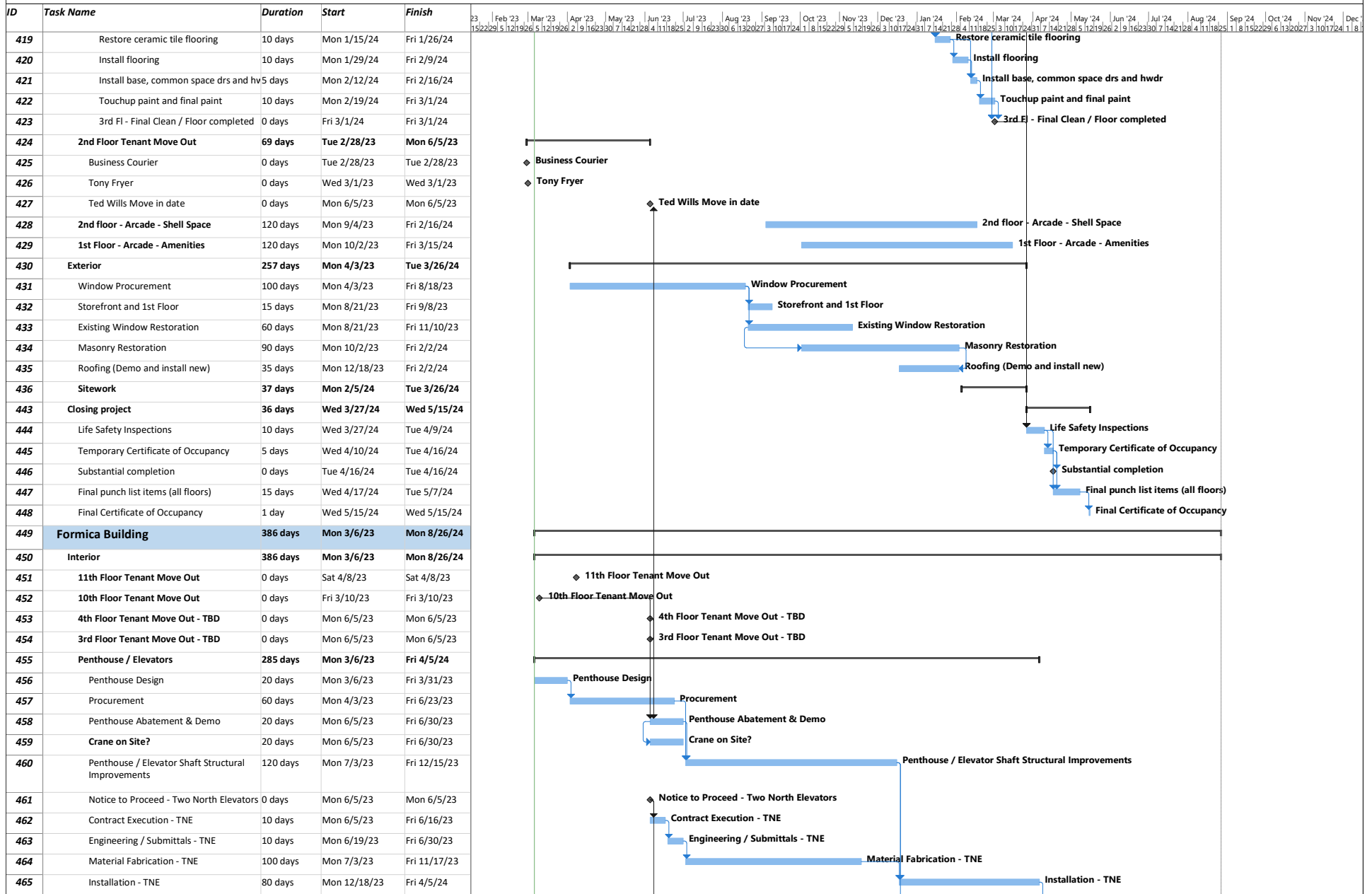
Mercantile Library & Formica Building
Construction Schedule 3/6/23



Project: Construction Schedule
Date: Mon 3/6/23

Task Milestone Summary Project Summary Critical Progress

Mercantile Library & Formica Building
Construction Schedule 3/6/23

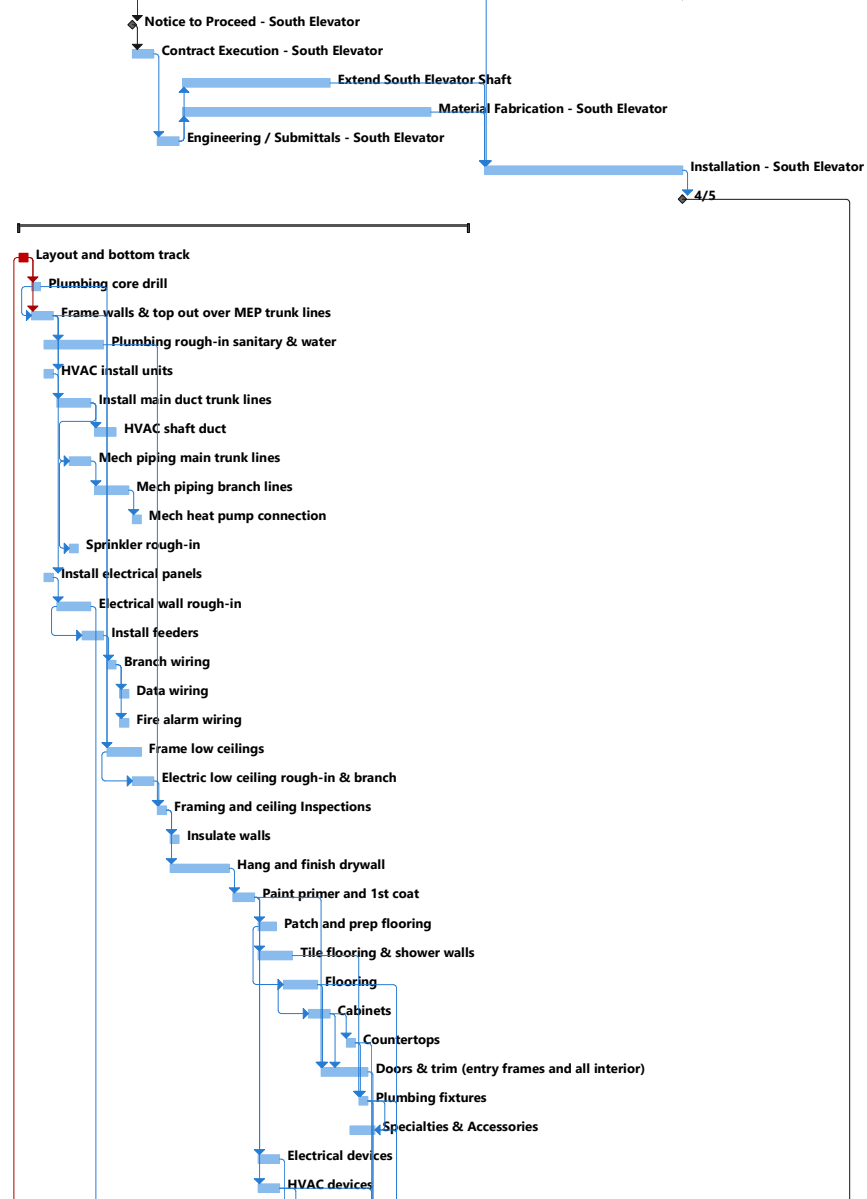


Project: Construction Schedule
Date: Mon 3/6/23

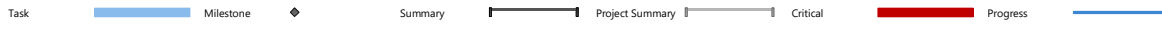
Task █ Milestone ◆ Summary ▬ Project Summary ▬ Critical █ Progress ▬

Mercantile Library & Formica Building
Construction Schedule 3/6/23

ID	Task Name	Duration	Start	Finish
466	Two North Elevators Turnover	0 days	Fri 4/5/24	Fri 4/5/24
467	Notice to Proceed - South Elevator	0 days	Mon 6/5/23	Mon 6/5/23
468	Contract Execution - South Elevator	10 days	Mon 6/5/23	Fri 6/16/23
469	Extend South Elevator Shaft	60 days	Mon 7/3/23	Fri 9/22/23
470	Material Fabrication - South Elevator	100 days	Mon 7/3/23	Fri 11/17/23
471	Engineering / Submittals - South Elevator	10 days	Mon 6/19/23	Fri 6/30/23
472	Installation - South Elevator	80 days	Mon 12/18/23	Fri 4/5/24
473	South Elevator Turnover	0 days	Fri 4/5/24	Fri 4/5/24
474	9th Floor	180 days	Mon 4/3/23	Fri 12/8/23
475	Layout and bottom track	5 days	Mon 4/3/23	Fri 4/7/23
476	Plumbing core drill	5 days	Mon 4/10/23	Fri 4/14/23
477	Frame walls & top out over MEP trunk lines	10 days	Mon 4/10/23	Fri 4/21/23
478	Plumbing rough-in sanitary & water	25 days	Mon 4/17/23	Fri 5/19/23
479	HVAC install units	5 days	Mon 4/17/23	Fri 4/21/23
480	Install main duct trunk lines	15 days	Mon 4/24/23	Fri 5/12/23
481	HVAC shaft duct	10 days	Mon 5/15/23	Fri 5/26/23
482	Mech piping main trunk lines	10 days	Mon 5/1/23	Fri 5/12/23
483	Mech piping branch lines	15 days	Mon 5/15/23	Fri 6/2/23
484	Mech heat pump connection	5 days	Mon 6/5/23	Fri 6/9/23
485	Sprinkler rough-in	5 days	Mon 5/1/23	Fri 5/5/23
486	Install electrical panels	5 days	Mon 4/17/23	Fri 4/21/23
487	Electrical wall rough-in	15 days	Mon 4/24/23	Fri 5/12/23
488	Install feeders	10 days	Mon 5/8/23	Fri 5/19/23
489	Branch wiring	5 days	Mon 5/22/23	Fri 5/26/23
490	Data wiring	5 days	Mon 5/29/23	Fri 6/2/23
491	Fire alarm wiring	5 days	Mon 5/29/23	Fri 6/2/23
492	Frame low ceilings	15 days	Mon 5/22/23	Fri 6/9/23
493	Electric low ceiling rough-in & branch	10 days	Mon 6/5/23	Fri 6/16/23
494	Framing and ceiling Inspections	5 days	Mon 6/19/23	Fri 6/23/23
495	Insulate walls	5 days	Mon 6/26/23	Fri 6/30/23
496	Hang and finish drywall	25 days	Mon 6/26/23	Fri 7/28/23
497	Paint primer and 1st coat	10 days	Mon 7/31/23	Fri 8/11/23
498	Patch and prep flooring	8 days	Mon 8/14/23	Wed 8/23/23
499	Tile flooring & shower walls	15 days	Mon 8/14/23	Fri 9/1/23
500	Flooring	15 days	Mon 8/28/23	Fri 9/15/23
501	Cabinets	10 days	Mon 9/11/23	Fri 9/22/23
502	Countertops	5 days	Mon 10/2/23	Fri 10/6/23
503	Doors & trim (entry frames and all interior)	20 days	Mon 9/18/23	Fri 10/13/23
504	Plumbing fixtures	5 days	Mon 10/9/23	Fri 10/13/23
505	Specialties & Accessories	10 days	Wed 10/4/23	Tue 10/17/23
506	Electrical devices	10 days	Mon 8/14/23	Fri 8/25/23
507	HVAC devices	10 days	Mon 8/14/23	Fri 8/25/23

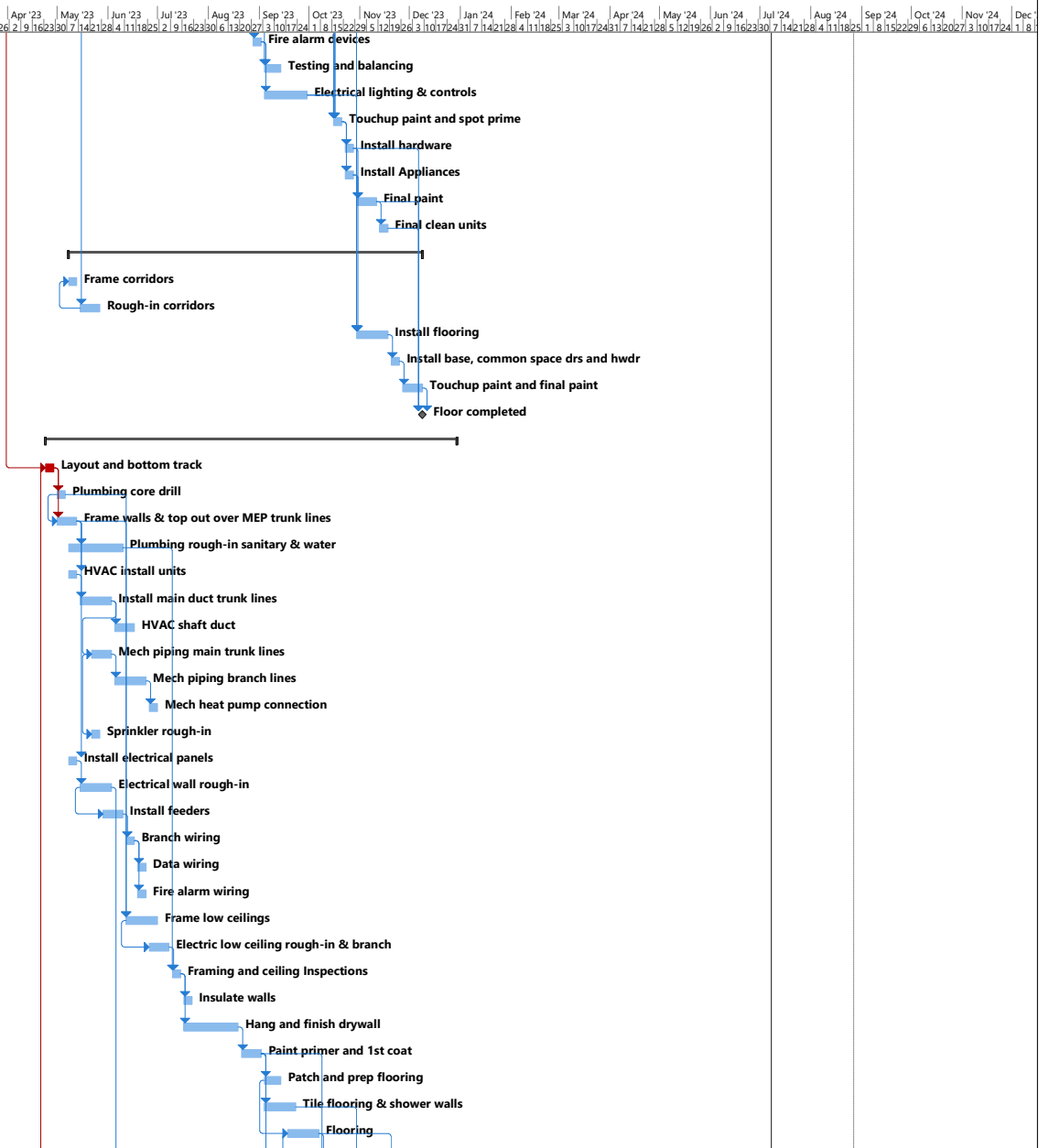


Project: Construction Schedule
Date: Mon 3/6/23



Mercantile Library & Formica Building
Construction Schedule 3/6/23

ID	Task Name	Duration	Start	Finish
508	Fire alarm devices	5 days	Mon 8/28/23	Fri 9/1/23
509	Testing and balancing	8 days	Mon 9/4/23	Wed 9/13/23
510	Electrical lighting & controls	20 days	Mon 9/4/23	Fri 9/29/23
511	Touchup paint and spot prime	5 days	Mon 10/16/23	Fri 10/20/23
512	Install hardware	5 days	Mon 10/23/23	Fri 10/27/23
513	Install Appliances	5 days	Mon 10/23/23	Fri 10/27/23
514	Final paint	10 days	Mon 10/30/23	Fri 11/10/23
515	Final clean units	5 days	Mon 11/13/23	Fri 11/17/23
516	Corridors	155 days	Mon 5/8/23	Fri 12/8/23
517	Frame corridors	5 days	Mon 5/8/23	Fri 5/12/23
518	Rough-in corridors	10 days	Mon 5/15/23	Fri 5/26/23
519	Install flooring	15 days	Mon 10/30/23	Fri 11/17/23
520	Install base, common space drs and hv	5 days	Mon 11/20/23	Fri 11/24/23
521	Touchup paint and final paint	10 days	Mon 11/27/23	Fri 12/8/23
522	Floor completed	0 days	Fri 12/8/23	Fri 12/8/23
523	8th Floor	180 days	Mon 4/24/23	Fri 12/29/23
524	Layout and bottom track	5 days	Mon 4/24/23	Fri 4/28/23
525	Plumbing core drill	5 days	Mon 5/1/23	Fri 5/5/23
526	Frame walls & top out over MEP trunk lines	10 days	Mon 5/1/23	Fri 5/12/23
527	Plumbing rough-in sanitary & water	25 days	Mon 5/8/23	Fri 6/9/23
528	HVAC install units	5 days	Mon 5/8/23	Fri 5/12/23
529	Install main duct trunk lines	15 days	Mon 5/15/23	Fri 6/2/23
530	HVAC shaft duct	10 days	Mon 6/5/23	Fri 6/16/23
531	Mech piping main trunk lines	10 days	Mon 5/22/23	Fri 6/2/23
532	Mech piping branch lines	15 days	Mon 6/5/23	Fri 6/23/23
533	Mech heat pump connection	5 days	Mon 6/26/23	Fri 6/30/23
534	Sprinkler rough-in	5 days	Mon 5/22/23	Fri 5/26/23
535	Install electrical panels	5 days	Mon 5/8/23	Fri 5/12/23
536	Electrical wall rough-in	15 days	Mon 5/15/23	Fri 6/2/23
537	Install feeders	10 days	Mon 5/29/23	Fri 6/9/23
538	Branch wiring	5 days	Mon 6/12/23	Fri 6/16/23
539	Data wiring	5 days	Mon 6/19/23	Fri 6/23/23
540	Fire alarm wiring	5 days	Mon 6/19/23	Fri 6/23/23
541	Frame low ceilings	15 days	Mon 6/12/23	Fri 6/30/23
542	Electric low ceiling rough-in & branch	10 days	Mon 6/26/23	Fri 7/7/23
543	Framing and ceiling Inspections	5 days	Mon 7/10/23	Fri 7/14/23
544	Insulate walls	5 days	Mon 7/17/23	Fri 7/21/23
545	Hang and finish drywall	25 days	Mon 7/17/23	Fri 8/18/23
546	Paint primer and 1st coat	10 days	Mon 8/21/23	Fri 9/1/23
547	Patch and prep flooring	8 days	Mon 9/4/23	Wed 9/13/23
548	Tile flooring & shower walls	15 days	Mon 9/4/23	Fri 9/22/23
549	Flooring	15 days	Mon 9/18/23	Fri 10/6/23



Project: Construction Schedule
Date: Mon 3/6/23

Task █ Milestone ◆ Summary — Project Summary — Critical — Progress —

Mercantile Library & Formica Building
Construction Schedule 3/6/23

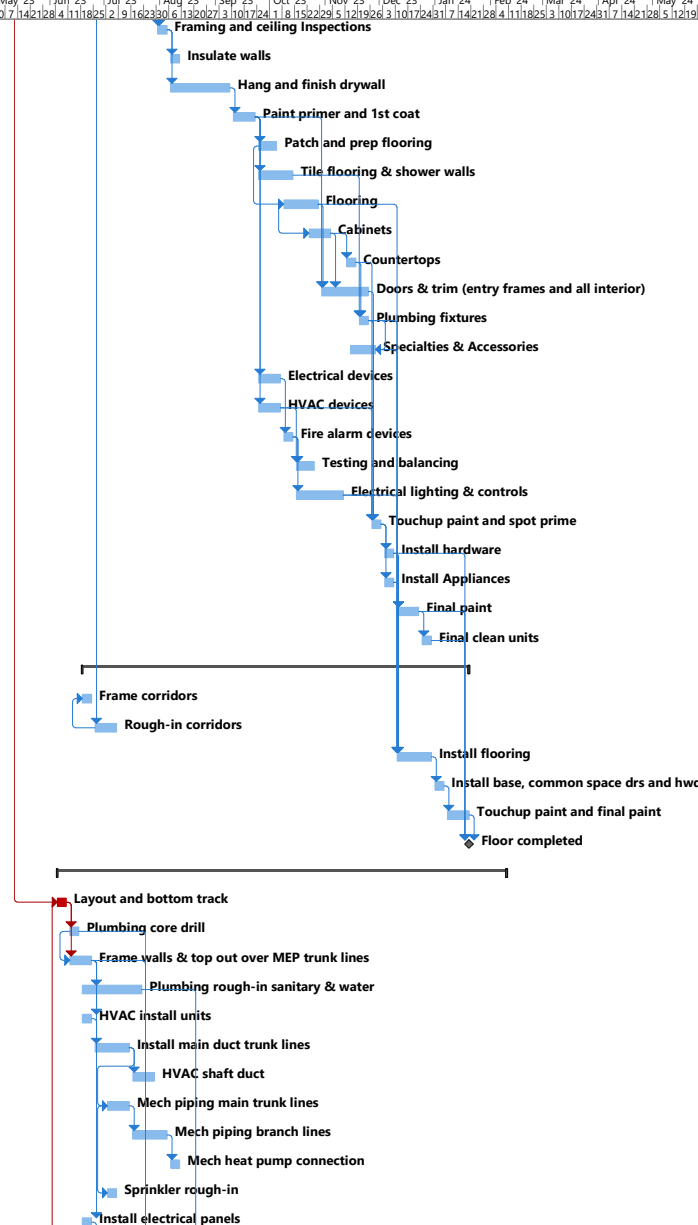


Project: Construction Schedule
Date: Mon 3/6/23

Task █ Milestone ◆ Summary ▬ Project Summary ▬ Critical █ Progress ▬

Mercantile Library & Formica Building
Construction Schedule 3/6/23

ID	Task Name	Duration	Start	Finish
592	Framing and ceiling inspections	5 days	Mon 7/31/23	Fri 8/4/23
593	Insulate walls	5 days	Mon 8/7/23	Fri 8/11/23
594	Hang and finish drywall	25 days	Mon 8/7/23	Fri 9/8/23
595	Paint primer and 1st coat	10 days	Mon 9/11/23	Fri 9/22/23
596	Patch and prep flooring	8 days	Mon 9/25/23	Wed 10/4/23
597	Tile flooring & shower walls	15 days	Mon 9/25/23	Fri 10/13/23
598	Flooring	15 days	Mon 10/9/23	Fri 10/27/23
599	Cabinets	10 days	Mon 10/23/23	Fri 11/3/23
600	Countertops	5 days	Mon 11/13/23	Fri 11/17/23
601	Doors & trim (entry frames and all interior)	20 days	Mon 10/30/23	Fri 11/24/23
602	Plumbing fixtures	5 days	Mon 11/20/23	Fri 11/24/23
603	Specialties & Accessories	10 days	Wed 11/15/23	Tue 11/28/23
604	Electrical devices	10 days	Mon 9/25/23	Fri 10/6/23
605	HVAC devices	10 days	Mon 9/25/23	Fri 10/6/23
606	Fire alarm devices	5 days	Mon 10/9/23	Fri 10/13/23
607	Testing and balancing	8 days	Mon 10/16/23	Wed 10/25/23
608	Electrical lighting & controls	20 days	Mon 10/16/23	Fri 11/10/23
609	Touchup paint and spot prime	5 days	Mon 11/27/23	Fri 12/1/23
610	Install hardware	5 days	Mon 12/4/23	Fri 12/8/23
611	Install Appliances	5 days	Mon 12/4/23	Fri 12/8/23
612	Final paint	10 days	Mon 12/11/23	Fri 12/22/23
613	Final clean units	5 days	Mon 12/25/23	Fri 12/29/23
614	Corridors	155 days	Mon 6/19/23	Fri 1/19/24
615	Frame corridors	5 days	Mon 6/19/23	Fri 6/23/23
616	Rough-in corridors	10 days	Mon 6/26/23	Fri 7/7/23
617	Install flooring	15 days	Mon 12/11/23	Fri 12/29/23
618	Install base, common space drs and hv	5 days	Mon 1/1/24	Fri 1/5/24
619	Touchup paint and final paint	10 days	Mon 1/8/24	Fri 1/19/24
620	Floor completed	0 days	Fri 1/19/24	Fri 1/19/24
621	6th Floor	180 days	Mon 6/5/23	Fri 2/9/24
622	Layout and bottom track	5 days	Mon 6/5/23	Fri 6/9/23
623	Plumbing core drill	5 days	Mon 6/12/23	Fri 6/16/23
624	Frame walls & top out over MEP trunk lines	10 days	Mon 6/12/23	Fri 6/23/23
625	Plumbing rough-in sanitary & water	25 days	Mon 6/19/23	Fri 7/21/23
626	HVAC install units	5 days	Mon 6/19/23	Fri 6/23/23
627	Install main duct trunk lines	15 days	Mon 6/26/23	Fri 7/14/23
628	HVAC shaft duct	10 days	Mon 7/17/23	Fri 7/28/23
629	Mech piping main trunk lines	10 days	Mon 7/3/23	Fri 7/14/23
630	Mech piping branch lines	15 days	Mon 7/17/23	Fri 8/4/23
631	Mech heat pump connection	5 days	Mon 8/7/23	Fri 8/11/23
632	Sprinkler rough-in	5 days	Mon 7/3/23	Fri 7/7/23
633	Install electrical panels	5 days	Mon 6/19/23	Fri 6/23/23

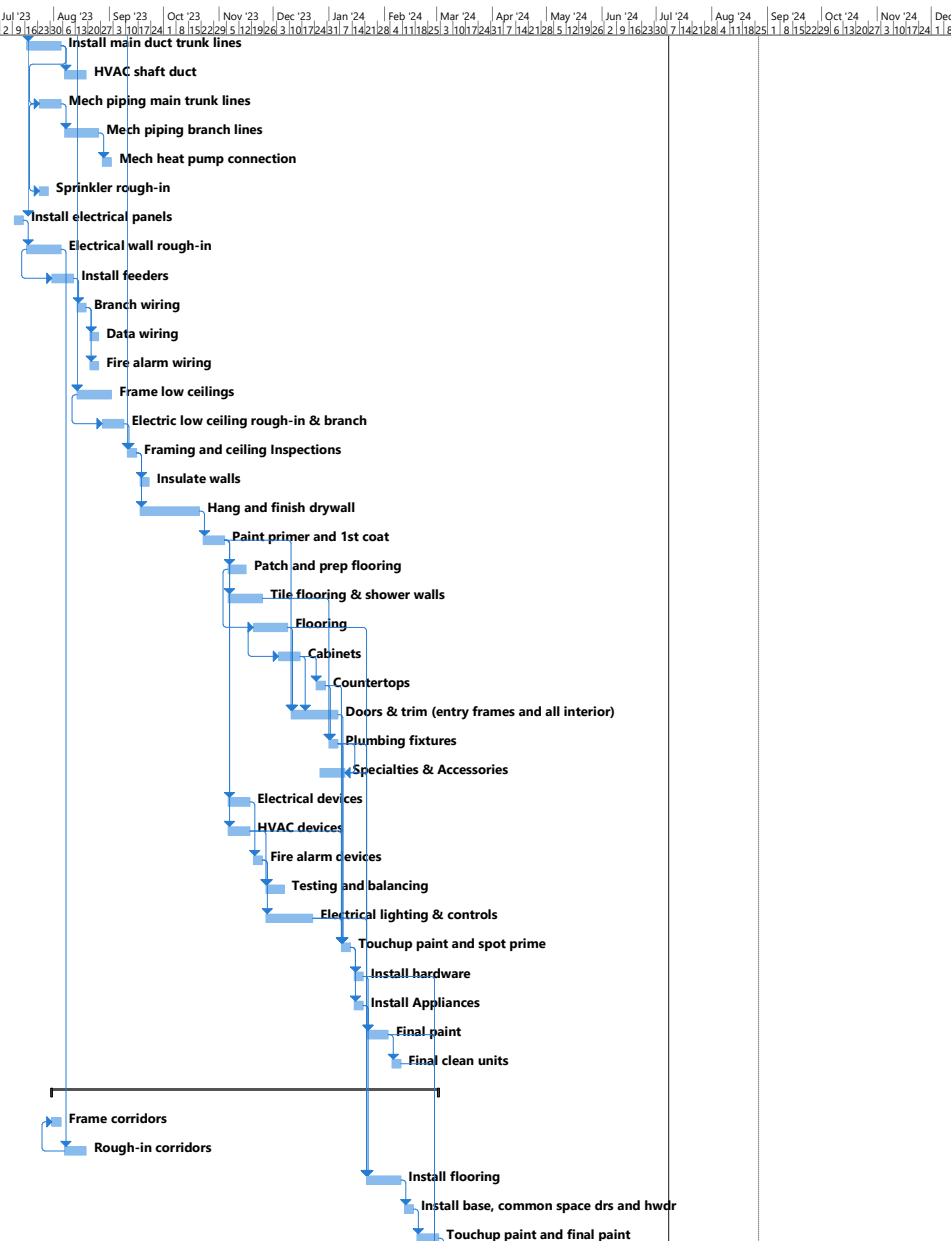


Project: Construction Schedule
Date: Mon 3/6/23

Task █ Milestone ◆ Summary ▬ Project Summary ▬ Critical █ Progress ▬

Mercantile Library & Formica Building
Construction Schedule 3/6/23

ID	Task Name	Duration	Start	Finish
676	Install main duct trunk lines	15 days	Mon 7/17/23	Fri 8/4/23
677	HVAC shaft duct	10 days	Mon 8/7/23	Fri 8/18/23
678	Mech piping main trunk lines	10 days	Mon 7/24/23	Fri 8/4/23
679	Mech piping branch lines	15 days	Mon 8/7/23	Fri 8/25/23
680	Mech heat pump connection	5 days	Mon 8/28/23	Fri 9/1/23
681	Sprinkler rough-in	5 days	Mon 7/24/23	Fri 7/28/23
682	Install electrical panels	5 days	Mon 7/10/23	Fri 7/14/23
683	Electrical wall rough-in	15 days	Mon 7/17/23	Fri 8/4/23
684	Install feeders	10 days	Mon 7/31/23	Fri 8/11/23
685	Branch wiring	5 days	Mon 8/14/23	Fri 8/18/23
686	Data wiring	5 days	Mon 8/21/23	Fri 8/25/23
687	Fire alarm wiring	5 days	Mon 8/21/23	Fri 8/25/23
688	Frame low ceilings	15 days	Mon 8/14/23	Fri 9/1/23
689	Electric low ceiling rough-in & branch	10 days	Mon 8/28/23	Fri 9/8/23
690	Framing and ceiling Inspections	5 days	Mon 9/11/23	Fri 9/15/23
691	Insulate walls	5 days	Mon 9/18/23	Fri 9/22/23
692	Hang and finish drywall	25 days	Mon 9/18/23	Fri 10/20/23
693	Paint primer and 1st coat	10 days	Mon 10/23/23	Fri 11/3/23
694	Patch and prep flooring	8 days	Mon 11/6/23	Wed 11/15/23
695	Tile flooring & shower walls	15 days	Mon 11/6/23	Fri 11/24/23
696	Flooring	15 days	Mon 11/20/23	Fri 12/8/23
697	Cabinets	10 days	Mon 12/4/23	Fri 12/15/23
698	Countertops	5 days	Mon 12/25/23	Fri 12/29/23
699	Doors & trim (entry frames and all interic	20 days	Mon 12/11/23	Fri 1/5/24
700	Plumbing fixtures	5 days	Mon 1/1/24	Fri 1/5/24
701	Specialties & Accessories	10 days	Wed 12/27/23	Tue 1/9/24
702	Electrical devices	10 days	Mon 11/6/23	Fri 11/17/23
703	HVAC devices	10 days	Mon 11/6/23	Fri 11/17/23
704	Fire alarm devices	5 days	Mon 11/20/23	Fri 11/24/23
705	Testing and balancing	8 days	Mon 11/27/23	Wed 12/6/23
706	Electrical lighting & controls	20 days	Mon 11/27/23	Fri 12/22/23
707	Touchup paint and spot prime	5 days	Mon 1/8/24	Fri 1/12/24
708	Install hardware	5 days	Mon 1/15/24	Fri 1/19/24
709	Install Appliances	5 days	Mon 1/15/24	Fri 1/19/24
710	Final paint	10 days	Mon 1/22/24	Fri 2/2/24
711	Final clean units	5 days	Mon 2/5/24	Fri 2/9/24
712	Corridors	155 days	Mon 7/31/23	Fri 3/1/24
713	Frame corridors	5 days	Mon 7/31/23	Fri 8/4/23
714	Rough-in corridors	10 days	Mon 8/7/23	Fri 8/18/23
715	Install flooring	15 days	Mon 1/22/24	Fri 2/9/24
716	Install base, common space drs and hv	5 days	Mon 2/12/24	Fri 2/16/24
717	Touchup paint and final paint	10 days	Mon 2/19/24	Fri 3/1/24

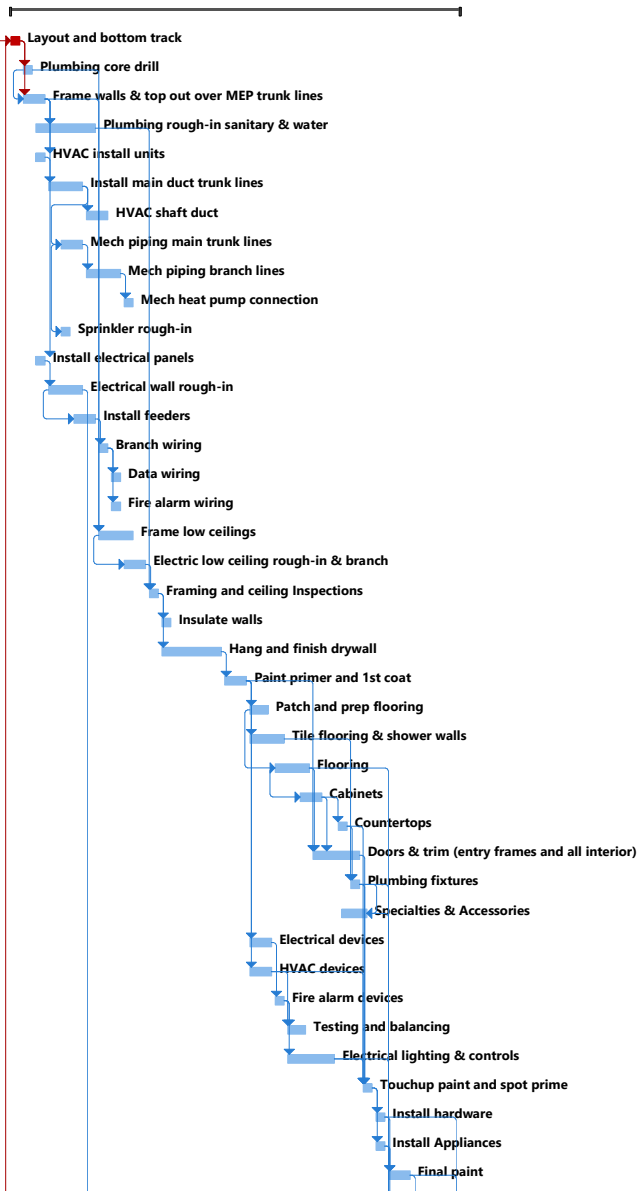


Project: Construction Schedule
Date: Mon 3/6/23

Task Milestone Summary Project Summary Critical Progress

Mercantile Library & Formica Building
Construction Schedule 3/6/23

ID	Task Name	Duration	Start	Finish
718	Floor completed	0 days	Fri 3/1/24	Fri 3/1/24
719	4th Floor	180 days	Mon 7/17/23	Fri 3/22/24
720	Layout and bottom track	5 days	Mon 7/17/23	Fri 7/21/23
721	Plumbing core drill	5 days	Mon 7/24/23	Fri 7/28/23
722	Frame walls & top out over MEP trunk lines	10 days	Mon 7/24/23	Fri 8/4/23
723	Plumbing rough-in sanitary & water	25 days	Mon 7/31/23	Fri 9/1/23
724	HVAC install units	5 days	Mon 7/31/23	Fri 8/4/23
725	Install main duct trunk lines	15 days	Mon 8/7/23	Fri 8/25/23
726	HVAC shaft duct	10 days	Mon 8/28/23	Fri 9/8/23
727	Mech piping main trunk lines	10 days	Mon 8/14/23	Fri 8/25/23
728	Mech piping branch lines	15 days	Mon 8/28/23	Fri 9/15/23
729	Mech heat pump connection	5 days	Mon 9/18/23	Fri 9/22/23
730	Sprinkler rough-in	5 days	Mon 8/14/23	Fri 8/18/23
731	Install electrical panels	5 days	Mon 7/31/23	Fri 8/4/23
732	Electrical wall rough-in	15 days	Mon 8/7/23	Fri 8/25/23
733	Install feeders	10 days	Mon 8/21/23	Fri 9/1/23
734	Branch wiring	5 days	Mon 9/4/23	Fri 9/8/23
735	Data wiring	5 days	Mon 9/11/23	Fri 9/15/23
736	Fire alarm wiring	5 days	Mon 9/11/23	Fri 9/15/23
737	Frame low ceilings	15 days	Mon 9/4/23	Fri 9/22/23
738	Electric low ceiling rough-in & branch	10 days	Mon 9/18/23	Fri 9/29/23
739	Framing and ceiling inspections	5 days	Mon 10/2/23	Fri 10/6/23
740	Insulate walls	5 days	Mon 10/9/23	Fri 10/13/23
741	Hang and finish drywall	25 days	Mon 10/9/23	Fri 11/10/23
742	Paint primer and 1st coat	10 days	Mon 11/13/23	Fri 11/24/23
743	Patch and prep flooring	8 days	Mon 11/27/23	Wed 12/6/23
744	Tile flooring & shower walls	15 days	Mon 11/27/23	Fri 12/15/23
745	Flooring	15 days	Mon 12/11/23	Fri 12/29/23
746	Cabinets	10 days	Mon 12/25/23	Fri 1/5/24
747	Countertops	5 days	Mon 1/15/24	Fri 1/19/24
748	Doors & trim (entry frames and all interior)	20 days	Mon 1/1/24	Fri 1/26/24
749	Plumbing fixtures	5 days	Mon 1/22/24	Fri 1/26/24
750	Specialties & Accessories	10 days	Wed 1/17/24	Tue 1/30/24
751	Electrical devices	10 days	Mon 11/27/23	Fri 12/8/23
752	HVAC devices	10 days	Mon 11/27/23	Fri 12/8/23
753	Fire alarm devices	5 days	Mon 12/11/23	Fri 12/15/23
754	Testing and balancing	8 days	Mon 12/18/23	Wed 12/27/23
755	Electrical lighting & controls	20 days	Mon 12/18/23	Fri 1/12/24
756	Touchup paint and spot prime	5 days	Mon 1/29/24	Fri 2/2/24
757	Install hardware	5 days	Mon 2/5/24	Fri 2/9/24
758	Install Appliances	5 days	Mon 2/5/24	Fri 2/9/24
759	Final paint	10 days	Mon 2/12/24	Fri 2/23/24

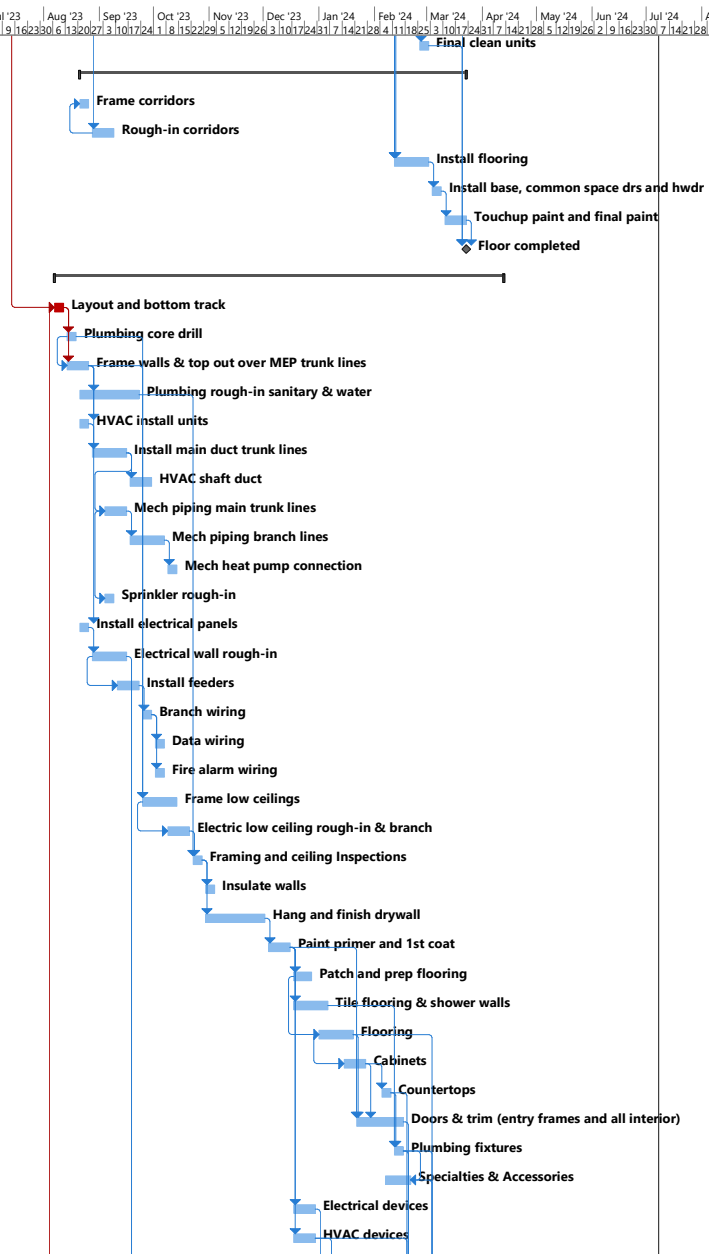


Project: Construction Schedule
Date: Mon 3/6/23

Task Milestone Summary Project Summary Critical Progress

Mercantile Library & Formica Building
Construction Schedule 3/6/23

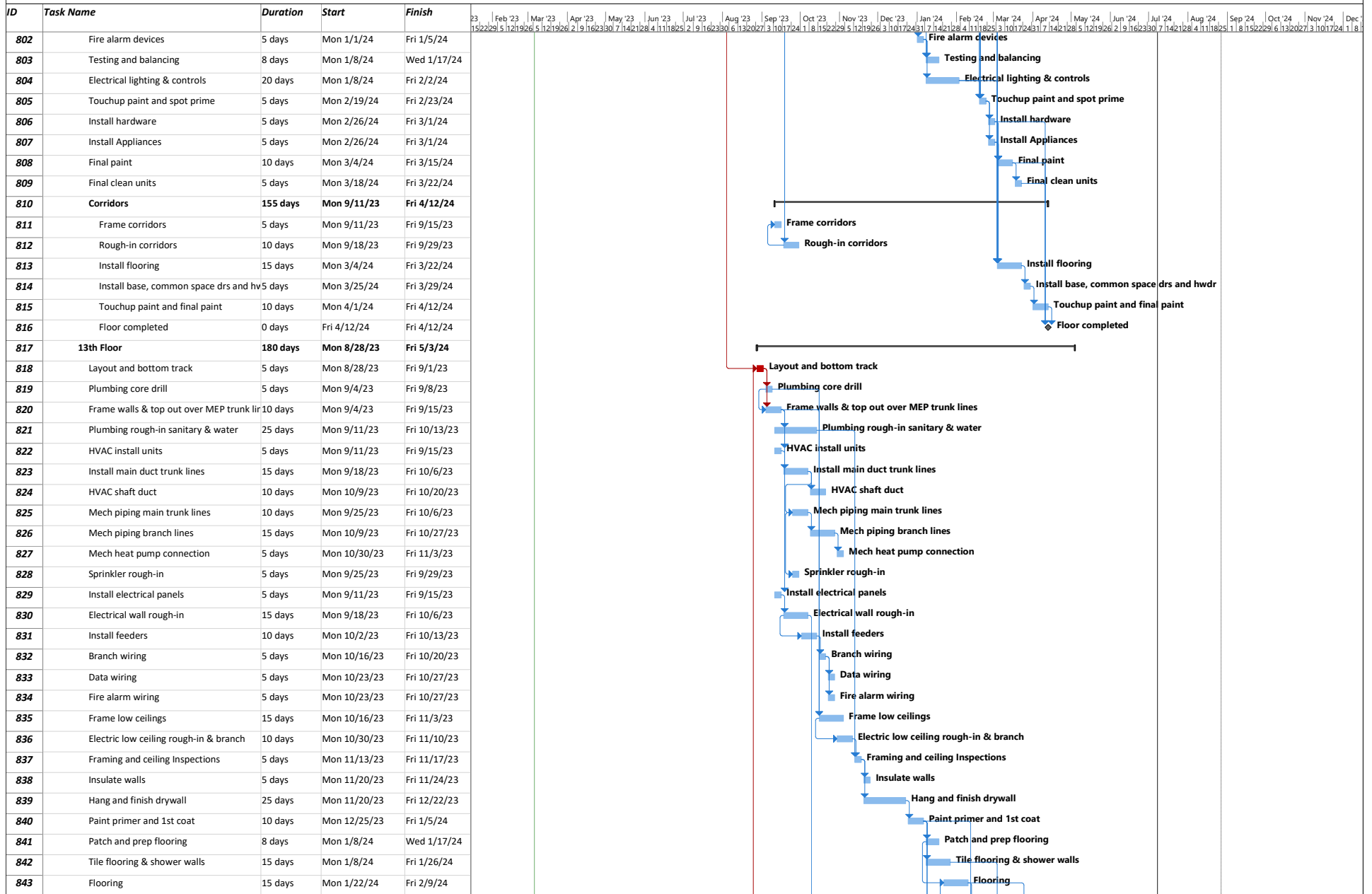
ID	Task Name	Duration	Start	Finish
760	Final clean units	5 days	Mon 2/26/24	Fri 3/1/24
761	Corridors	155 days	Mon 8/21/23	Fri 3/22/24
762	Frame corridors	5 days	Mon 8/21/23	Fri 8/25/23
763	Rough-in corridors	10 days	Mon 8/28/23	Fri 9/8/23
764	Install flooring	15 days	Mon 2/12/24	Fri 3/1/24
765	Install base, common space drs and hv	5 days	Mon 3/4/24	Fri 3/8/24
766	Touchup paint and final paint	10 days	Mon 3/11/24	Fri 3/22/24
767	Floor completed	0 days	Fri 3/22/24	Fri 3/22/24
768	3rd Floor	180 days	Mon 8/7/23	Fri 4/12/24
769	Layout and bottom track	5 days	Mon 8/7/23	Fri 8/11/23
770	Plumbing core drill	5 days	Mon 8/14/23	Fri 8/18/23
771	Frame walls & top out over MEP trunk lin	10 days	Mon 8/14/23	Fri 8/25/23
772	Plumbing rough-in sanitary & water	25 days	Mon 8/21/23	Fri 9/22/23
773	HVAC install units	5 days	Mon 8/21/23	Fri 8/25/23
774	Install main duct trunk lines	15 days	Mon 8/28/23	Fri 9/15/23
775	HVAC shaft duct	10 days	Mon 9/18/23	Fri 9/29/23
776	Mech piping main trunk lines	10 days	Mon 9/4/23	Fri 9/15/23
777	Mech piping branch lines	15 days	Mon 9/18/23	Fri 10/6/23
778	Mech heat pump connection	5 days	Mon 10/9/23	Fri 10/13/23
779	Sprinkler rough-in	5 days	Mon 9/4/23	Fri 9/8/23
780	Install electrical panels	5 days	Mon 8/21/23	Fri 8/25/23
781	Electrical wall rough-in	15 days	Mon 8/28/23	Fri 9/15/23
782	Install feeders	10 days	Mon 9/11/23	Fri 9/22/23
783	Branch wiring	5 days	Mon 9/25/23	Fri 9/29/23
784	Data wiring	5 days	Mon 10/2/23	Fri 10/6/23
785	Fire alarm wiring	5 days	Mon 10/2/23	Fri 10/6/23
786	Frame low ceilings	15 days	Mon 9/25/23	Fri 10/13/23
787	Electric low ceiling rough-in & branch	10 days	Mon 10/9/23	Fri 10/20/23
788	Framing and ceiling Inspections	5 days	Mon 10/23/23	Fri 10/27/23
789	Insulate walls	5 days	Mon 10/30/23	Fri 11/3/23
790	Hang and finish drywall	25 days	Mon 10/30/23	Fri 12/1/23
791	Paint primer and 1st coat	10 days	Mon 12/4/23	Fri 12/15/23
792	Patch and prep flooring	8 days	Mon 12/18/23	Wed 12/27/23
793	Tile flooring & shower walls	15 days	Mon 12/18/23	Fri 1/5/24
794	Flooring	15 days	Mon 1/1/24	Fri 1/19/24
795	Cabinets	10 days	Mon 1/15/24	Fri 1/26/24
796	Countertops	5 days	Mon 2/5/24	Fri 2/9/24
797	Doors & trim (entry frames and all interic	20 days	Mon 1/22/24	Fri 2/16/24
798	Plumbing fixtures	5 days	Mon 2/12/24	Fri 2/16/24
799	Specialties & Accessories	10 days	Wed 2/7/24	Tue 2/20/24
800	Electrical devices	10 days	Mon 12/18/23	Fri 12/29/23
801	HVAC devices	10 days	Mon 12/18/23	Fri 12/29/23



Project: Construction Schedule
Date: Mon 3/6/23

Task █ Milestone ◆ Summary ▬ Project Summary ▬ Critical █ Progress ▬

Mercantile Library & Formica Building
Construction Schedule 3/6/23

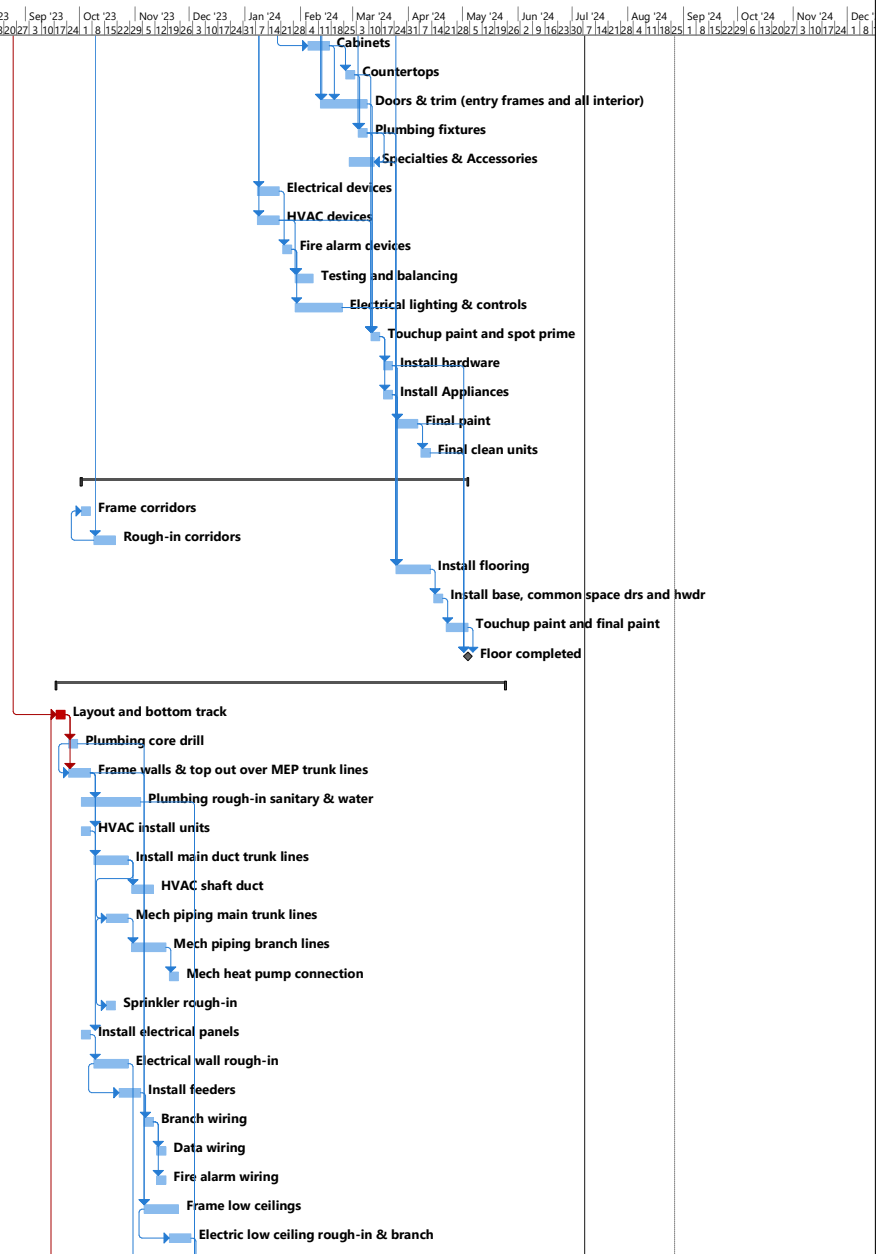


Project: Construction Schedule
Date: Mon 3/6/23

Task Milestone Summary Project Summary Critical Progress

Mercantile Library & Formica Building
Construction Schedule 3/6/23

ID	Task Name	Duration	Start	Finish
844	Cabinets	10 days	Mon 2/5/24	Fri 2/16/24
845	Countertops	5 days	Mon 2/26/24	Fri 3/1/24
846	Doors & trim (entry frames and all interior)	20 days	Mon 2/12/24	Fri 3/8/24
847	Plumbing fixtures	5 days	Mon 3/4/24	Fri 3/8/24
848	Specialties & Accessories	10 days	Wed 2/28/24	Tue 3/12/24
849	Electrical devices	10 days	Mon 1/8/24	Fri 1/19/24
850	HVAC devices	10 days	Mon 1/8/24	Fri 1/19/24
851	Fire alarm devices	5 days	Mon 1/22/24	Fri 1/26/24
852	Testing and balancing	8 days	Mon 1/29/24	Wed 2/7/24
853	Electrical lighting & controls	20 days	Mon 1/29/24	Fri 2/23/24
854	Touchup paint and spot prime	5 days	Mon 3/11/24	Fri 3/15/24
855	Install hardware	5 days	Mon 3/18/24	Fri 3/22/24
856	Install Appliances	5 days	Mon 3/18/24	Fri 3/22/24
857	Final paint	10 days	Mon 3/25/24	Fri 4/5/24
858	Final clean units	5 days	Mon 4/8/24	Fri 4/12/24
859	Corridors	155 days	Mon 10/2/23	Fri 5/3/24
860	Frame corridors	5 days	Mon 10/2/23	Fri 10/6/23
861	Rough-in corridors	10 days	Mon 10/9/23	Fri 10/20/23
862	Install flooring	15 days	Mon 3/25/24	Fri 4/12/24
863	Install base, common space drs and hv	5 days	Mon 4/15/24	Fri 4/19/24
864	Touchup paint and final paint	10 days	Mon 4/22/24	Fri 5/3/24
865	Floor completed	0 days	Fri 5/3/24	Fri 5/3/24
866	12th Floor	180 days	Mon 9/18/23	Fri 5/24/24
867	Layout and bottom track	5 days	Mon 9/18/23	Fri 9/22/23
868	Plumbing core drill	5 days	Mon 9/25/23	Fri 9/29/23
869	Frame walls & top out over MEP trunk li	10 days	Mon 9/25/23	Fri 10/6/23
870	Plumbing rough-in sanitary & water	25 days	Mon 10/2/23	Fri 11/3/23
871	HVAC install units	5 days	Mon 10/2/23	Fri 10/6/23
872	Install main duct trunk lines	15 days	Mon 10/9/23	Fri 10/27/23
873	HVAC shaft duct	10 days	Mon 10/30/23	Fri 11/10/23
874	Mech piping main trunk lines	10 days	Mon 10/16/23	Fri 10/27/23
875	Mech piping branch lines	15 days	Mon 10/30/23	Fri 11/17/23
876	Mech heat pump connection	5 days	Mon 11/20/23	Fri 11/24/23
877	Sprinkler rough-in	5 days	Mon 10/16/23	Fri 10/20/23
878	Install electrical panels	5 days	Mon 10/2/23	Fri 10/6/23
879	Electrical wall rough-in	15 days	Mon 10/9/23	Fri 10/27/23
880	Install feeders	10 days	Mon 10/23/23	Fri 11/3/23
881	Branch wiring	5 days	Mon 11/6/23	Fri 11/10/23
882	Data wiring	5 days	Mon 11/13/23	Fri 11/17/23
883	Fire alarm wiring	5 days	Mon 11/13/23	Fri 11/17/23
884	Frame low ceilings	15 days	Mon 11/6/23	Fri 11/24/23
885	Electric low ceiling rough-in & branch	10 days	Mon 11/20/23	Fri 12/1/23

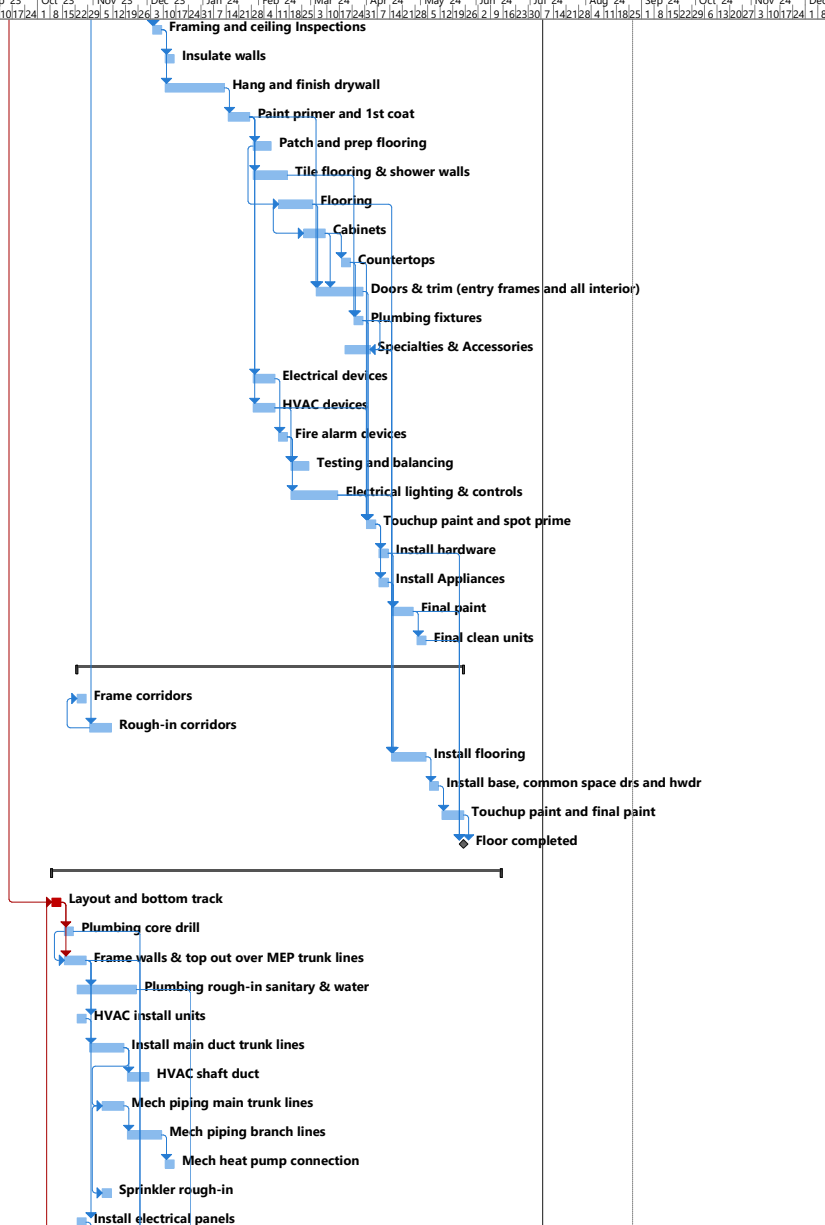


Project: Construction Schedule
Date: Mon 3/6/23

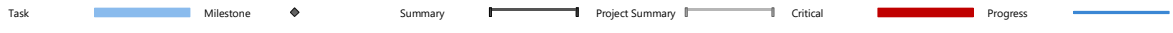
Task █ Milestone ◆ Summary Project Summary Critical █ Progress █

Mercantile Library & Formica Building
Construction Schedule 3/6/23

ID	Task Name	Duration	Start	Finish
886	Framing and ceiling inspections	5 days	Mon 12/4/23	Fri 12/8/23
887	Insulate walls	5 days	Mon 12/11/23	Fri 12/15/23
888	Hang and finish drywall	25 days	Mon 12/11/23	Fri 1/12/24
889	Paint primer and 1st coat	10 days	Mon 1/15/24	Fri 1/26/24
890	Patch and prep flooring	8 days	Mon 1/29/24	Wed 2/7/24
891	Tile flooring & shower walls	15 days	Mon 1/29/24	Fri 2/16/24
892	Flooring	15 days	Mon 2/12/24	Fri 3/1/24
893	Cabinets	10 days	Mon 2/26/24	Fri 3/8/24
894	Countertops	5 days	Mon 3/18/24	Fri 3/22/24
895	Doors & trim (entry frames and all interior)	20 days	Mon 3/4/24	Fri 3/29/24
896	Plumbing fixtures	5 days	Mon 3/25/24	Fri 3/29/24
897	Specialties & Accessories	10 days	Wed 3/20/24	Tue 4/2/24
898	Electrical devices	10 days	Mon 1/29/24	Fri 2/9/24
899	HVAC devices	10 days	Mon 1/29/24	Fri 2/9/24
900	Fire alarm devices	5 days	Mon 2/12/24	Fri 2/16/24
901	Testing and balancing	8 days	Mon 2/19/24	Wed 2/28/24
902	Electrical lighting & controls	20 days	Mon 2/19/24	Fri 3/15/24
903	Touchup paint and spot prime	5 days	Mon 4/1/24	Fri 4/5/24
904	Install hardware	5 days	Mon 4/8/24	Fri 4/12/24
905	Install Appliances	5 days	Mon 4/8/24	Fri 4/12/24
906	Final paint	10 days	Mon 4/15/24	Fri 4/26/24
907	Final clean units	5 days	Mon 4/29/24	Fri 5/3/24
908	Corridors	155 days	Mon 10/23/23	Fri 5/24/24
909	Frame corridors	5 days	Mon 10/23/23	Fri 10/27/23
910	Rough-in corridors	10 days	Mon 10/30/23	Fri 11/10/23
911	Install flooring	15 days	Mon 4/15/24	Fri 5/3/24
912	Install base, common space drs and hwr	5 days	Mon 5/6/24	Fri 5/10/24
913	Touchup paint and final paint	10 days	Mon 5/13/24	Fri 5/24/24
914	Floor completed	0 days	Fri 5/24/24	Fri 5/24/24
915	11th Floor	180 days	Mon 10/9/23	Fri 6/14/24
916	Layout and bottom track	5 days	Mon 10/9/23	Fri 10/13/23
917	Plumbing core drill	5 days	Mon 10/16/23	Fri 10/20/23
918	Frame walls & top out over MEP trunk lines	10 days	Mon 10/16/23	Fri 10/27/23
919	Plumbing rough-in sanitary & water	25 days	Mon 10/23/23	Fri 11/24/23
920	HVAC install units	5 days	Mon 10/23/23	Fri 10/27/23
921	Install main duct trunk lines	15 days	Mon 10/30/23	Fri 11/17/23
922	HVAC shaft duct	10 days	Mon 11/20/23	Fri 12/1/23
923	Mech piping main trunk lines	10 days	Mon 11/6/23	Fri 11/17/23
924	Mech piping branch lines	15 days	Mon 11/20/23	Fri 12/8/23
925	Mech heat pump connection	5 days	Mon 12/11/23	Fri 12/15/23
926	Sprinkler rough-in	5 days	Mon 11/6/23	Fri 11/10/23
927	Install electrical panels	5 days	Mon 10/23/23	Fri 10/27/23

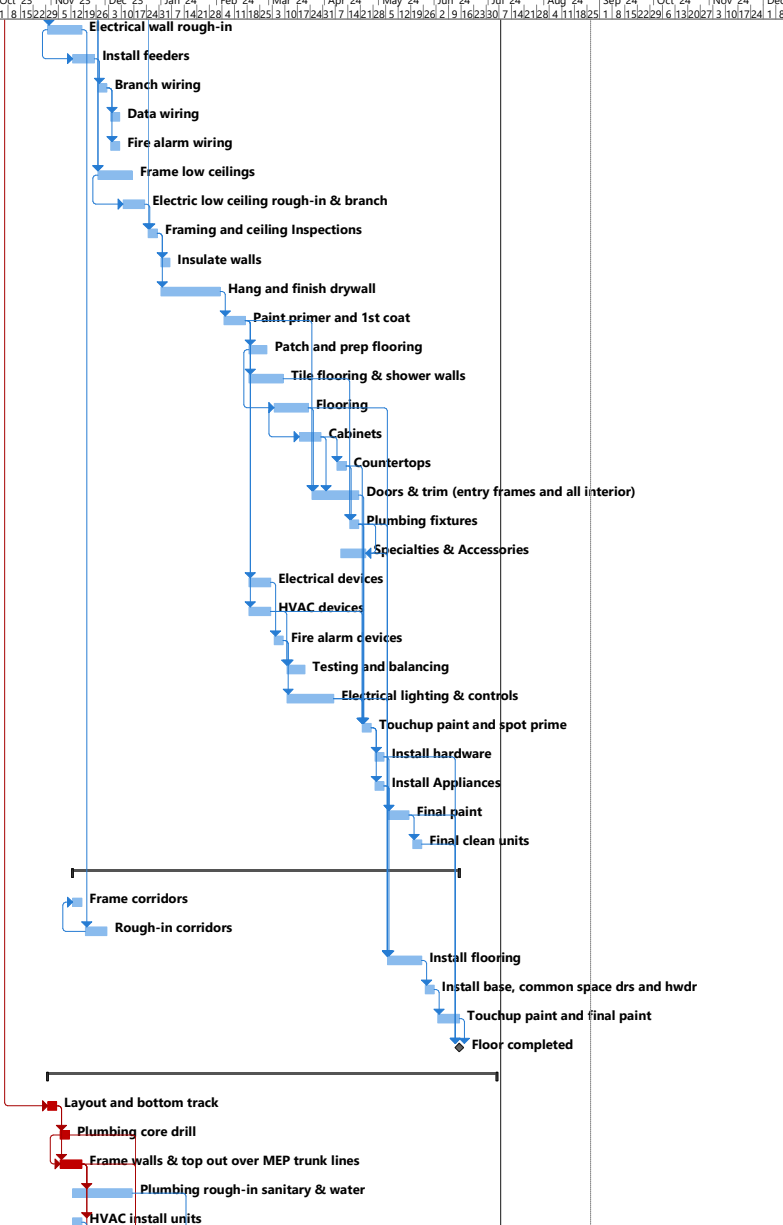


Project: Construction Schedule
Date: Mon 3/6/23



Mercantile Library & Formica Building
Construction Schedule 3/6/23

ID	Task Name	Duration	Start	Finish
928	Electrical wall rough-in	15 days	Mon 10/30/23	Fri 11/17/23
929	Install feeders	10 days	Mon 11/13/23	Fri 11/24/23
930	Branch wiring	5 days	Mon 11/27/23	Fri 12/1/23
931	Data wiring	5 days	Mon 12/4/23	Fri 12/8/23
932	Fire alarm wiring	5 days	Mon 12/4/23	Fri 12/8/23
933	Frame low ceilings	15 days	Mon 11/27/23	Fri 12/15/23
934	Electric low ceiling rough-in & branch	10 days	Mon 12/11/23	Fri 12/22/23
935	Framing and ceiling Inspections	5 days	Mon 12/25/23	Fri 12/29/23
936	Insulate walls	5 days	Mon 1/1/24	Fri 1/5/24
937	Hang and finish drywall	25 days	Mon 1/1/24	Fri 2/2/24
938	Paint primer and 1st coat	10 days	Mon 2/5/24	Fri 2/16/24
939	Patch and prep flooring	8 days	Mon 2/19/24	Wed 2/28/24
940	Tile flooring & shower walls	15 days	Mon 2/19/24	Fri 3/8/24
941	Flooring	15 days	Mon 3/4/24	Fri 3/22/24
942	Cabinets	10 days	Mon 3/18/24	Fri 3/29/24
943	Countertops	5 days	Mon 4/8/24	Fri 4/12/24
944	Doors & trim (entry frames and all interior)	20 days	Mon 3/25/24	Fri 4/19/24
945	Plumbing fixtures	5 days	Mon 4/15/24	Fri 4/19/24
946	Specialties & Accessories	10 days	Wed 4/10/24	Tue 4/23/24
947	Electrical devices	10 days	Mon 2/19/24	Fri 3/1/24
948	HVAC devices	10 days	Mon 2/19/24	Fri 3/1/24
949	Fire alarm devices	5 days	Mon 3/4/24	Fri 3/8/24
950	Testing and balancing	8 days	Mon 3/11/24	Wed 3/20/24
951	Electrical lighting & controls	20 days	Mon 3/11/24	Fri 4/5/24
952	Touchup paint and spot prime	5 days	Mon 4/22/24	Fri 4/26/24
953	Install hardware	5 days	Mon 4/29/24	Fri 5/3/24
954	Install Appliances	5 days	Mon 4/29/24	Fri 5/3/24
955	Final paint	10 days	Mon 5/6/24	Fri 5/17/24
956	Final clean units	5 days	Mon 5/20/24	Fri 5/24/24
957	Corridors	155 days	Mon 11/13/23	Fri 6/14/24
958	Frame corridors	5 days	Mon 11/13/23	Fri 11/17/23
959	Rough-in corridors	10 days	Mon 11/20/23	Fri 12/1/23
960	Install flooring	15 days	Mon 5/6/24	Fri 5/24/24
961	Install base, common space drs and hv	5 days	Mon 5/27/24	Fri 5/31/24
962	Touchup paint and final paint	10 days	Mon 6/3/24	Fri 6/14/24
963	Floor completed	0 days	Fri 6/14/24	Fri 6/14/24
964	10th Floor	180 days	Mon 10/30/23	Fri 7/5/24
965	Layout and bottom track	5 days	Mon 10/30/23	Fri 11/3/23
966	Plumbing core drill	5 days	Mon 11/6/23	Fri 11/10/23
967	Frame walls & top out over MEP trunk lines	10 days	Mon 11/6/23	Fri 11/17/23
968	Plumbing rough-in sanitary & water	25 days	Mon 11/13/23	Fri 12/15/23
969	HVAC install units	5 days	Mon 11/13/23	Fri 11/17/23

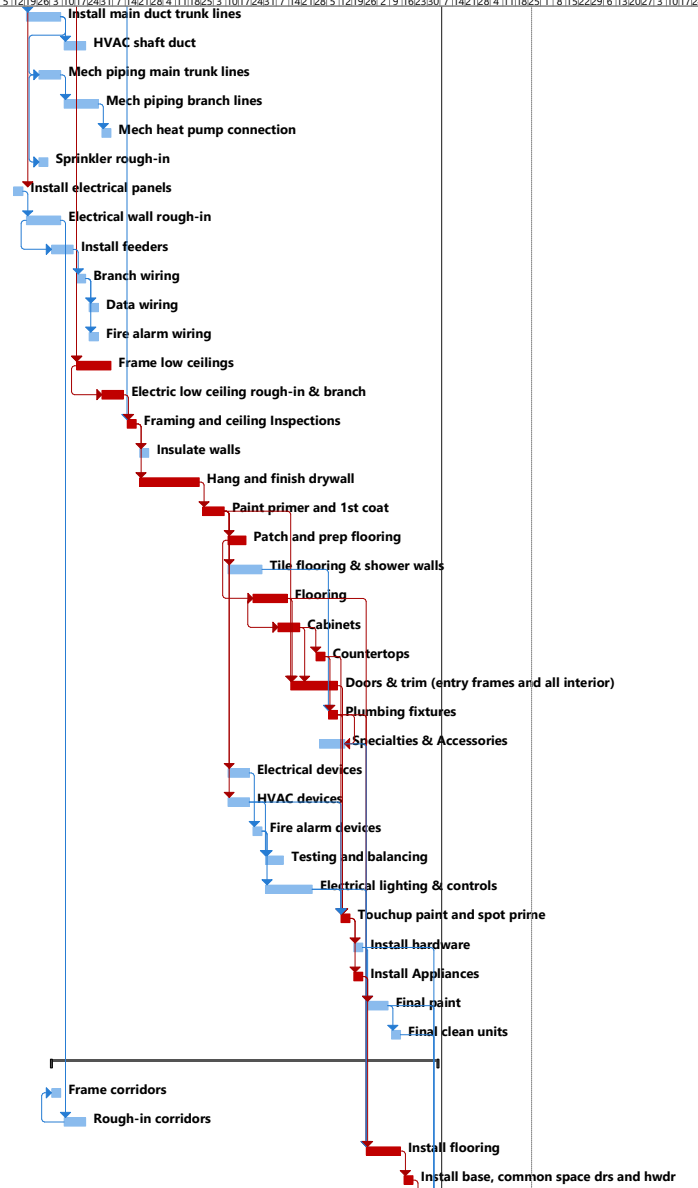


Project: Construction Schedule
Date: Mon 3/6/23

Task █ Milestone ◆ Summary Project Summary Critical █ Progress █

Mercantile Library & Formica Building
Construction Schedule 3/6/23

ID	Task Name	Duration	Start	Finish
970	Install main duct trunk lines	15 days	Mon 11/20/23	Fri 12/8/23
971	HVAC shaft duct	10 days	Mon 12/11/23	Fri 12/22/23
972	Mech piping main trunk lines	10 days	Mon 11/27/23	Fri 12/8/23
973	Mech piping branch lines	15 days	Mon 12/11/23	Fri 12/29/23
974	Mech heat pump connection	5 days	Mon 1/1/24	Fri 1/5/24
975	Sprinkler rough-in	5 days	Mon 11/27/23	Fri 12/1/23
976	Install electrical panels	5 days	Mon 11/13/23	Fri 11/17/23
977	Electrical wall rough-in	15 days	Mon 11/20/23	Fri 12/8/23
978	Install feeders	10 days	Mon 12/4/23	Fri 12/15/23
979	Branch wiring	5 days	Mon 12/18/23	Fri 12/22/23
980	Data wiring	5 days	Mon 12/25/23	Fri 12/29/23
981	Fire alarm wiring	5 days	Mon 12/25/23	Fri 12/29/23
982	Frame low ceilings	15 days	Mon 12/18/23	Fri 1/5/24
983	Electric low ceiling rough-in & branch	10 days	Mon 1/1/24	Fri 1/12/24
984	Framing and ceiling Inspections	5 days	Mon 1/15/24	Fri 1/19/24
985	Insulate walls	5 days	Mon 1/22/24	Fri 1/26/24
986	Hang and finish drywall	25 days	Mon 1/22/24	Fri 2/23/24
987	Paint primer and 1st coat	10 days	Mon 2/26/24	Fri 3/8/24
988	Patch and prep flooring	8 days	Mon 3/11/24	Wed 3/20/24
989	Tile flooring & shower walls	15 days	Mon 3/11/24	Fri 3/29/24
990	Flooring	15 days	Mon 3/25/24	Fri 4/12/24
991	Cabinets	10 days	Mon 4/8/24	Fri 4/19/24
992	Countertops	5 days	Mon 4/29/24	Fri 5/3/24
993	Doors & trim (entry frames and all interior)	20 days	Mon 4/15/24	Fri 5/10/24
994	Plumbing fixtures	5 days	Mon 5/6/24	Fri 5/10/24
995	Specialties & Accessories	10 days	Wed 5/1/24	Tue 5/14/24
996	Electrical devices	10 days	Mon 3/11/24	Fri 3/22/24
997	HVAC devices	10 days	Mon 3/11/24	Fri 3/22/24
998	Fire alarm devices	5 days	Mon 3/25/24	Fri 3/29/24
999	Testing and balancing	8 days	Mon 4/1/24	Wed 4/10/24
1000	Electrical lighting & controls	20 days	Mon 4/1/24	Fri 4/26/24
1001	Touchup paint and spot prime	5 days	Mon 5/13/24	Fri 5/17/24
1002	Install hardware	5 days	Mon 5/20/24	Fri 5/24/24
1003	Install Appliances	5 days	Mon 5/20/24	Fri 5/24/24
1004	Final paint	10 days	Mon 5/27/24	Fri 6/7/24
1005	Final clean units	5 days	Mon 6/10/24	Fri 6/14/24
1006	Corridors	155 days	Mon 12/4/23	Fri 7/5/24
1007	Frame corridors	5 days	Mon 12/4/23	Fri 12/8/23
1008	Rough-in corridors	10 days	Mon 12/11/23	Fri 12/22/23
1009	Install flooring	15 days	Mon 5/27/24	Fri 6/14/24
1010	Install base, common space drs and hwdr	5 days	Mon 6/17/24	Fri 6/21/24

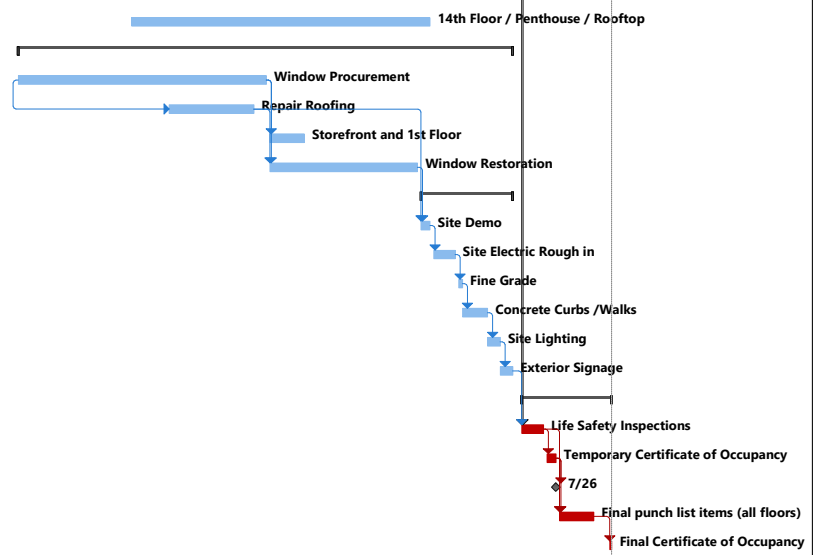


Project: Construction Schedule
Date: Mon 3/6/23

Task █ Milestone ◆ Summary █ Project Summary █ Critical █ Progress █

Mercantile Library & Formica Building
Construction Schedule 3/6/23

ID	Task Name	Duration	Start	Finish
1011	Touchup paint and final paint	10 days	Mon 6/24/24	Fri 7/5/24
1012	Floor completed	0 days	Fri 7/5/24	Fri 7/5/24
1013	14th Floor / Penthouse / Rooftop	120 days	Mon 12/4/23	Fri 5/17/24
1014	Exterior	197 days	Mon 10/2/23	Tue 7/2/24
1015	Window Procurement	100 days	Mon 10/2/23	Fri 2/16/24
1016	Repair Roofing	35 days	Mon 12/25/23	Fri 2/9/24
1017	Storefront and 1st Floor	15 days	Mon 2/19/24	Fri 3/8/24
1018	Window Restoration	60 days	Mon 2/19/24	Fri 5/10/24
1019	Sitework	37 days	Mon 5/13/24	Tue 7/2/24
1020	Site Demo	5 days	Mon 5/13/24	Fri 5/17/24
1021	Site Electric Rough in	10 days	Mon 5/20/24	Fri 5/31/24
1022	Fine Grade	2 days	Mon 6/3/24	Tue 6/4/24
1023	Concrete Curbs /Walks	10 days	Wed 6/5/24	Tue 6/18/24
1024	Site Lighting	5 days	Wed 6/19/24	Tue 6/25/24
1025	Exterior Signage	5 days	Wed 6/26/24	Tue 7/2/24
1026	Closing project	36 days	Mon 7/8/24	Mon 8/26/24
1027	Life Safety Inspections	10 days	Mon 7/8/24	Fri 7/19/24
1028	Temporary Certificate of Occupancy	5 days	Mon 7/22/24	Fri 7/26/24
1029	Substantial completion	0 days	Fri 7/26/24	Fri 7/26/24
1030	Final punch list items (all floors)	15 days	Mon 7/29/24	Fri 8/16/24
1031	Final Certificate of Occupancy	1 day	Mon 8/26/24	Mon 8/26/24



Project: Construction Schedule
Date: Mon 3/6/23

Task █ Milestone ◆ Summary ▬ Project Summary ▬ Critical █ Progress ▬