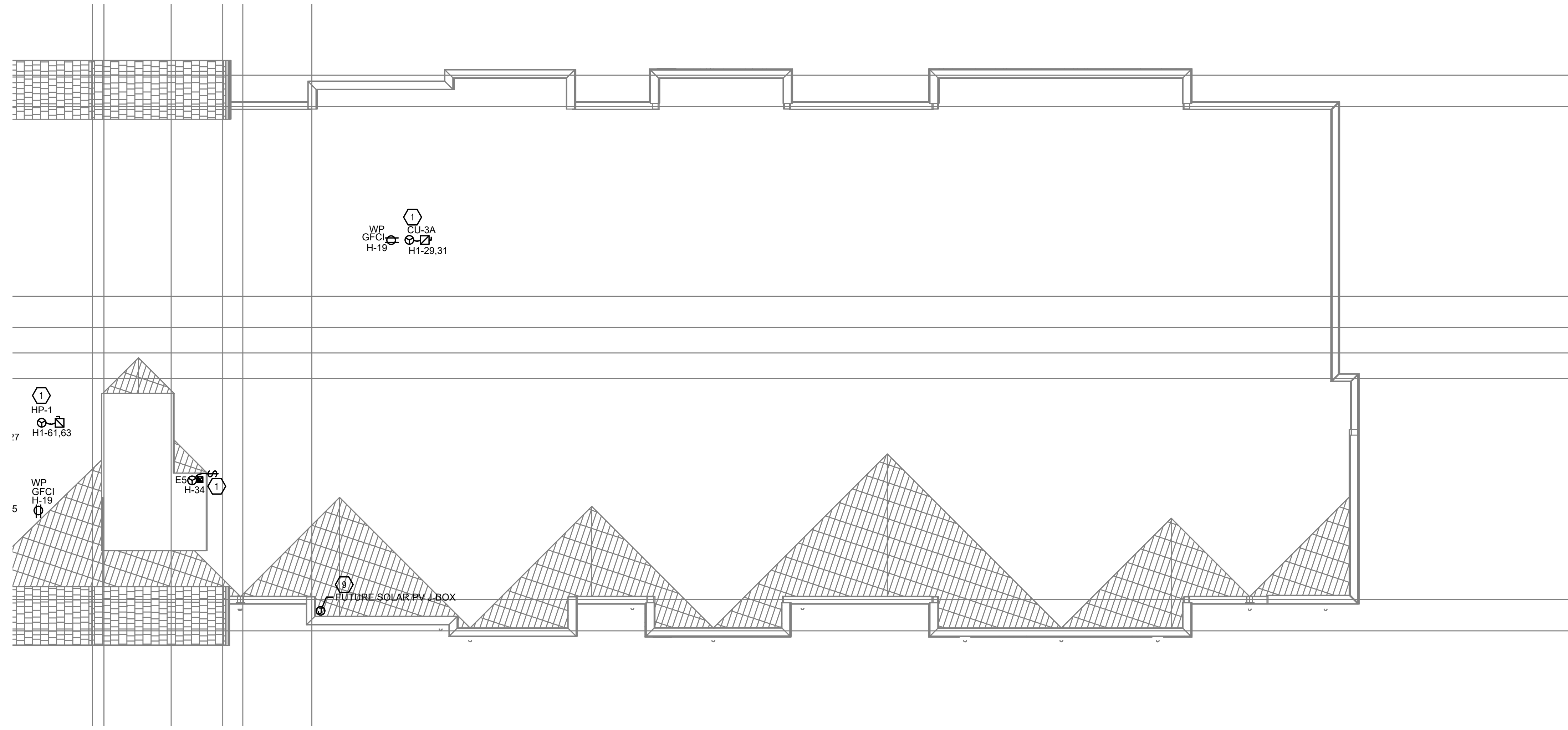
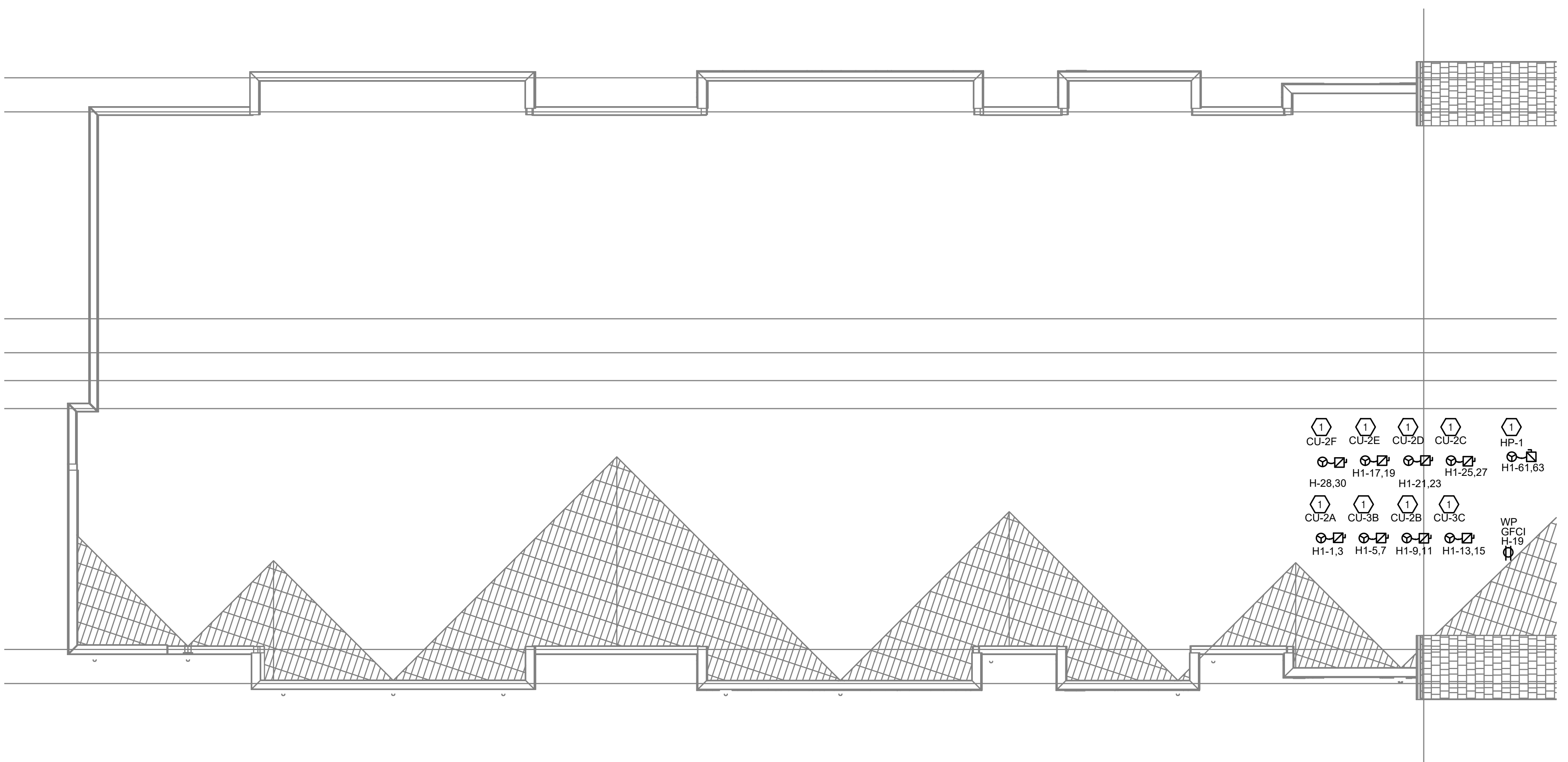


PROVIDE THE AUTHORITIES HAVING JURISDICTION WITH INFORMATION TO DETERMINE CODE COMPLIANCE. THE INSTALLING CONTRACTOR IS RESPONSIBLE TO ENSURE THAT MEANS, METHODS, AND MATERIALS USED IN CONSTRUCTION ARE IN ACCORDANCE WITH ANY CONTRACTUAL AGREEMENT THAT MAY EXIST WITH AN OWNER, CONSTRUCTION MANAGER, GENERAL CONTRACTOR, ETC. EBS ACCEPTS NO RESPONSIBILITY OR LIABILITY FOR THE COMPLIANCE OR CONDITION OF EXISTING EQUIPMENT AND WIRING.



2
E103 **ELECTRICAL POWER ROOF PLAN - RIGHT**
 SCALE: 1/8" = 1'-0"



1
E103 **ELECTRICAL POWER ROOF PLAN - LEFT**
 SCALE: 1/8" = 1'-0"

SCOPE OF WORK

NEW CONSTRUCTION OF SENIOR LIVING APARTMENTS. NEW POWER AND LIGHTING THROUGHOUT. SEE DETAIL SHEETS FOR MORE INFORMATION.

GENERAL NOTES - OVERALL PROJECT

A. EBS DRAWINGS INDICATE DESIGN INTENT AND REQUIRED OUTCOMES. IF CONDITIONS ARISE IN THE FIELD THAT REQUIRE DEVIATIONS FROM THE DRAWINGS IT IS ASSUMED THAT THE CONTRACTOR WILL DETERMINE THE APPROPRIATE DEVIATION WITH APPROVAL FROM THE OWNER. EBS IS AVAILABLE TO ASSIST WHEN REQUIRED IF ISSUES ARISE.

GENERAL NOTES - POWER

A. ELECTRICAL CONTRACTOR IS RESPONSIBLE FOR ALL CONDUIT/CABLE ROUTING. COORDINATE ROUTING WITH ALL OTHER TRADES AND BUILDING CONDITIONS.

B. SEE SINGLE LINE DIAGRAM FOR FEEDER WIRE AND CONDUIT SIZE. ALL CIRCUITS NOT SHOWN ON DRAWING SHALL BE INSTALLED TO MEET MINIMUM SIZE REQUIRED BY NEC.

C. PROVIDE MOTOR STARTERS FOR EQUIPMENT AS INDICATED ON DRAWINGS. COORDINATE ANY INTERLOCKING WIRING WITH HVAC CONTRACTOR AND PROVIDE WIRING, COILS, AND AUXILIARY CONTACTS AS NECESSARY. SIZE ALL CIRCUITS FOR ACTUAL EQUIPMENT TO BE CONNECTED.

D. ALL PANELS AND DISCONNECTS LOCATED OUTDOORS SHALL BE LABELED NEW 3R.

E. ROOF MOUNTED AND OUTDOOR EQUIPMENT SHALL HAVE 120V RECEPTACLE MOUNTED WITHIN 20' OF EACH PIECE. RECEPTACLES SHALL BE IN WEATHER PROOF BOX AND HAVE GFCI PROTECTION.

F. FOR ITEMS FURNISHED BY OTHER TRADES, ELECTRICAL CONTRACTOR TO FULLY COORDINATE BREAKER AND WIRE SIZES WITH ACTUAL EQUIPMENT BEING CONNECTED PRIOR TO ROUGH-IN OR INSTALLATION. THE SIZES ON PANEL SCHEDULES REFER TO BASIS OF DESIGN SELECTIONS, AND ACTUAL ITEMS MAY DEVIATE FROM BASIS OF DESIGN. IT IS THE RESPONSIBILITY OF THE ELECTRICAL CONTRACTOR TO CONFIRM REQUIRED WIRE AND BREAKER SIZES WITH THE CONTRACTOR FURNISHING THE EQUIPMENT.

G. REFER TO ARCHITECT'S PLANS AND ELEVATIONS FOR ALL DEVICE MOUNTING HEIGHTS.

H. CONTRACTOR TO PROVIDE GROUNDING AND BONDING AS REQUIRED FOR ELECTRICAL SYSTEMS. GROUNDING AND BONDING IS CONSIDERED MEANS AND METHODS OF CONSTRUCTION, AND SHOULD BE COMPLETED BY THE ELECTRICAL CONTRACTOR IN ACCORDANCE WITH NEC 250. GAS PIPING SYSTEMS MUST BE BONDED PER UTILITY PROVIDER'S INSTALLATION GUIDELINES WHERE REQUIRED.

I. GFCI DEVICES MUST BE INSTALLED IN ACCESSIBLE LOCATIONS AND NOT PLACED BEHIND EQUIPMENT.

FIRE ALARM - DELEGATED DESIGN

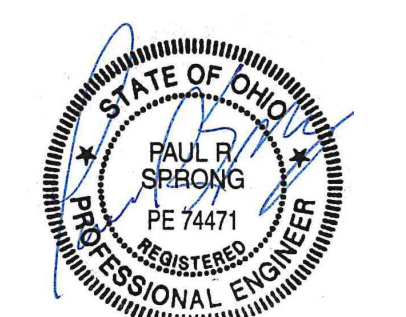
A. COMPLY WITH PERFORMANCE REQUIREMENTS AND DESIGN CRITERIA CONTAINED ON DRAWINGS. RESPONSIBILITY FOR PROVIDING A COMPLIANT, OPERATIONAL FIRE ALARM SYSTEM LIES WITH THE CONTRACTOR. REFER TO ARCHITECT'S CODE SHEET FOR USE GROUP AND OCCUPANT INFORMATION WHEN PROVIDING THE FIRE ALARM DESIGN. VERIFY REQUIREMENTS SPECIFIC TO PROJECT LOCALITY AND INCLUDE IN SCOPE.

B. INSTALLING CONTRACTOR SHALL FURNISH ALL REQUIRED DRAWINGS AND CALCULATIONS REQUIRED FOR FIRE ALARM PERMIT. DRAWINGS AND CALCULATIONS SHALL BE PREPARED BY AN INDIVIDUAL CARRYING ALL CERTIFICATIONS REQUIRED BY THE AGENCY RESPONSIBLE FOR REVIEW AND APPROVAL.

C. REQUIRED COMPONENTS THAT ARE NOT SHOWN ON DRAWINGS SUCH AS: RELAY MODULES, MONITOR MODULES, BOOSTER PANELS, ANNUNCIATORS, ETC. ARE THE RESPONSIBILITY OF THIS CONTRACTOR AND ARE INCLUDED IN THIS SCOPE OF WORK.

KEYED SHEET NOTES

- MECHANICAL EQUIPMENT PROVIDED BY THE MECHANICAL CONTRACTOR. WIRING BY THE ELECTRICAL CONTRACTOR. VERIFY LOCATION AND REQUIREMENTS WITH MECHANICAL CONTRACTOR PRIOR TO ROUGH-IN.
- ITEMS TO BE INSTALLED FOR THE ELEVATOR(S). CONFIRM ALL ELECTRICAL CONTRACTOR RESPONSIBLE WORK PRIOR TO ROUGH-IN. REFER TO ELEVATOR SHOP DRAWINGS FOR MORE INFORMATION. ALL ITEMS PERTAINING TO THE ELEVATOR TO BE INSTALLED PER NEC AND MANUFACTURER REQUIREMENTS.
- PROVIDE CODE REQUIRED RECEPTACLES IN ELEVATOR PIT AND TOP OF ELEVATOR SHAFT. CONFIRM ALL REQUIREMENTS WITH ELEVATOR CONTRACTOR AND OWNER PRIOR TO CONSTRUCTION.
- PROVIDE CODE REQUIRED LIGHTING IN ELEVATOR PIT AND TOP OF ELEVATOR SHAFT. CONFIRM ALL REQUIREMENTS WITH ELEVATOR CONTRACTOR AND OWNER PRIOR TO CONSTRUCTION.
- PROVIDE 4'X8'X1/2" PLYWOOD BACK BOARD (PAINTED ELECTRIC GRAY) AND DEDICATED QUAD RECEPTACLE FOR MAIN DATAPHONE DEMARC. PROVIDE RACEWAYS TO SITE AS INSTRUCTED BY DATAPHONE PROVIDER. CONFIRM ALL REQUIRED WORK WITH OWNER, ARCHITECT, AND CIVIL ENG PRIOR TO CONSTRUCTION.
- UNDERGROUND DATA CONDUITS (2) 4" & (1) 2". COORDINATE WITH OWNER AND ARCHITECT PRIOR TO CONSTRUCTION.
- ELECTRICAL EQUIPMENT. SEE DETAIL SHEETS FOR INFORMATION.
- BRANCH CIRCUITING SERVES THE ELEVATOR EQUIPMENT. ELEVATOR INSTALLATION PER NEC ARTICLE 620. PROVIDE BRANCH CIRCUIT FOR HOISTWAY PIT RECEPTACLES PER NEC 620.24, PART VI. DISCONNECTING MEANS AND CONTROL. COORDINATE ALL WORK WITH OWNER, ARCHITECT, AND ELEVATOR INSTALLING CONTRACTOR PRIOR TO CONSTRUCTION.
- PROVIDE CONTINUOUS 1" EMT CONDUIT (W/ PULLSTRING) AND TERMINATE IN A J-BOX LOCATED IN THE ATTIC SPACE BELOW SOLAR PV ARRAY ON ROOF TO FIRST FLOOR MECHANICAL ROOM J-BOX. COORDINATE ROUTING OF CONDUIT WITH OTHER TRADES IN CHASE SHOWN. J-BOX IN 1ST FLOOR MECH ROOM MUST BE WITHIN 8' OF THE DESIGNATED SERVICE PANEL. PANEL 'Y' LABEL BOTH ENDS "FOR FUTURE SOLAR PV SYSTEM". DESIGNATE 2-POLE BREAKER SPACE IN PANEL AS SHOWN IN SCHEDULES. SEE DETAILS SHEETS FOR MORE INFORMATION.
- PROVIDE 120 VOLT DEDICATED CIRCUIT FOR ADDRESSABLE FIRE ALARM CONTROL PANEL (FACP) SYSTEM TO BE DESIGN BUILT BY ELECTRICAL CONTRACTOR. PROVIDE ANNUNCIATOR PANEL AT MAIN ENTRANCE, AND CONFIRM ALL REQUIREMENTS WITH EOR, ARCH CODE SHEET PRIOR TO CONSTRUCTION.
- IN IDF ROOMS, PROVIDE DEDICATED QUAD RECEPTACLE, AND (2) 4" PVC CONDUIT SLEEVES FOR IT CABLING BETWEEN FLOORS. COORDINATE ALL ASSOCIATED WORK WITH OWNER AND ARCHITECT PRIOR TO CONSTRUCTION.
- ELECTRIC OPERATED DOORS 120V. RUN POWER TO BATTERY BACKUP AND J-BOX FOR MOTOR CONNECTION ASSOCIATED LOW-VOLTAGE WIRING FOR OWNER PROVIDED VIDEO ENTRY SYSTEM. SYSTEM TO CONNECT TO ALL APT UNITS, AND PROVIDE FEATURES SO THAT THE TENANTS CAN VISUALLY IDENTIFY VISITORS WHEN ALLOWING THEM ACCESS TO THE BUILDING. COORDINATE ALL WORK WITH OWNER AND ARCHITECT PRIOR TO CONSTRUCTION. PROVIDE BATTERY BACKUP AND SEE NOFO DESIGN DOCUMENT FOR MORE INFORMATION.
- NURSE CALL SYSTEM POWER SUPPLY. COORDINATE IN FIELD WITH OWNER AND ARCHITECT FOR LOCATION. INSTALL PER MANUFACTURER'S INSTRUCTIONS. PROVIDE BATTERY BACKUP AND SEE NOFO DESIGN DOCUMENT FOR MORE INFORMATION.
- INTERCOM SYSTEM POWER SUPPLY. COORDINATE IN FIELD WITH OWNER AND ARCHITECT FOR LOCATION. INSTALL PER MANUFACTURER'S INSTRUCTIONS. PROVIDE BATTERY BACKUP AND SEE NOFO DESIGN DOCUMENT FOR MORE INFORMATION.
- DOOR CONTACTS (TEKSTONE ST019) WITH IR0198 TONE SPEAKER. MOUNT CONTACTS ON DOOR/DOOR FRAMING PER MANUFACTURER'S GUIDELINES. WIRE CONTACTS TOGETHER AT DOOR AND DESIGNATE AS (1) ZONE AT DOOR SECURITY PANEL. COORDINATE INSTALLATION WITH G.C. TO AVOID CONFLICTS WITH OTHER TRADES AND DOOR HARDWARE.
- ELECTRICAL CONTRACTOR TO PROVIDE POWER FOR DOOR ACCESS CONTROL HARDWARE. COORDINATE DETAILS FOR PROPER INSTALLATION WITH INSTALLING CONTRACTOR AND PER MANUFACTURER. PROVIDE BATTERY BACKUP AND SEE NOFO DESIGN DOCUMENT FOR MORE INFORMATION.
- PROVIDE 4'X8'X1/2" PLYWOOD BACK BOARD (PAINTED ELECTRIC GRAY) AND DEDICATED RECEPTACLE FOR ACCESS CONTROL SYSTEM. CONFIRM ALL REQUIRED WORK WITH OWNER, ARCHITECT, AND SECURITY INSTALLER PRIOR TO CONSTRUCTION.
- SEE ENLARGED UNITS FOR DEVICE AND BRANCH CIRCUIT INFORMATION.
- EXHAUST FAN RUN CONTINUOUSLY.
- RADON FAN TO BE LOCATED IN CEILING. COORDINATE LOCATION WITH INSTALLER, OWNER AND ARCHITECT.



PR - 10367
ENGINEERED BUILDING SYSTEMS INC.
 Shared Success Through Collaboration and Efficiency
 615 Monmouth Street, Suite 201
 Newark, OH 43051 (614) 281-0085
 EBF Consulting Services, Inc. is an
 Copyright © 2015
 THIS DOCUMENT IS THE PROPERTY AND INCLUDING ALL RIGHTS RESERVED. NO PART OF THIS DOCUMENT MAY BE REPRODUCED OR TRANSMITTED IN ANY FORM OR BY ANY MEANS, ELECTRONIC OR MECHANICAL, WITHOUT THE WRITTEN PERMISSION OF ENGINEERED BUILDING SYSTEMS INC.

#	DATE	CHANGE DESCRIPTION

SCARBOROUGH SENIOR HOUSING
 480 ST CLAIR AVE.
 COLUMBUS, OH 43202
 FOR **NATIONAL CHURCH RESIDENCES**

Moody Nolan
 300 SPRUCE STREET
 SUITE 300
 COLUMBUS, OHIO 43215
 PHONE: (614) 461-4664
 FAX: (614) 280-8881
 CERTIFICATE NO: FIRM 00194745

DRAWING TITLE
ELECTRICAL POWER
FOURTH FLOOR PLAN

02/15/2024	
DRAWN BY: DJD	CHECKED BY: PRS
22186.00	
E104	
PERMIT SET	

REVISION:
 PRINT DATE:
 FILE INFO: