

ADDENDUM 1

Project: Paramount Launch Streetscape Improvements
Engineer of Record: The Kleingers Group
Addendum Date: May 10, 2024
Bid Date & Time: May 17, 2024 at 2:00 pm
Project Address: 900 Hundred Block of E. McMillian Street
Cincinnati, OH 45206

Addendum 1 - Bid Documents:

1. Revised Bid Form
2. Pre-Bid Meeting Sign-In Sheet
3. Kleinger's Addendum 1 Drawings dated May 9, 2024 – Sheets 1, 9, 15-17, 20-22.

Clarifications:

1. **Project is subject to Ohio Sales Tax. Bidders are to include sales tax in their bids.**
2. The location of the City Yard for granite curb pickup is on Millcreek Road off Spring Grove Avenue.
3. Jersey barricades along McMillan are existing and will remain in place for the duration of the project.
4. Sidewalk closure permit is to be included for the duration of the project.
5. Membership to the NRMCA Previous Concrete Contractor Certification program is NOT required.
6. Pervious concrete is only required at the new tree locations. Include two (2) 4'x6' sections of pervious concrete at every new tree. The remaining sidewalk shall be per the concrete walk notes on Sheet 4.



Paramount Launch Streetscape Improvements Revised Bid Form

DATE: _____

COMPANY NAME: _____

CONTACT: _____ PHONE: _____

CONTRACTOR ADDRESS: _____

EMAIL: _____

Deliver To: Model Construction, 1826 Race St., Cincinnati, Ohio 45202

For: **Paramount Launch Streetscape - McMillan Street Cincinnati, Ohio 45206**

Having examined the plans, specifications, scopes of work, related documents, and the proposed site, I (the Bidder) propose to furnish all labor, materials, equipment, supplies and taxes to construct the project in accordance with the Contract Documents, within the Price stated below. The prices are to cover all expenses incurred in performing the work required under the Contract Documents.

Have included **State of Ohio Heavy Highway Prevailing Wage Rates** Yes _____ No _____

This project is **SUBJECT TO OHIO SALES TAX.**

Reviewed and Included Addendum #(s) _____

Base Bid - Total:

_____ Dollars (\$) _____ (If discrepancy in amount appears, the words will govern.)

Alternate - Add for Performance and Payment Bond:

_____ Dollars (\$) _____ (If discrepancy in amount appears, the words will govern.)

Signature _____ Date _____

Printed Name _____

PARAMOUNT LAUNCH STREETSCAPE IMPROVEMENTS

CITY OF CINCINNATI
HAMILTON COUNTY, OHIO



VICINITY MAP
NOT TO SCALE

PROJECT DESCRIPTION

THIS PROJECT INCLUDES THE REPLACEMENT OF APPROXIMATELY 350' OF SIDEWALK ALONG THE NORTH EDGE OF MCMILLAN STREET RUNNING WEST FROM THE INTERSECTION WITH KEMPER LANE. ASSOCIATED IMPROVEMENTS INCLUDE THE ADDITION AND/OR MODIFICATION OF SIGNAGE, STREET TREES, TRAFFIC SIGNALS, AND STREET LIGHTING.

2023 SPECIFICATIONS

THE STANDARD SPECIFICATIONS OF THE STATE OF OHIO, DEPARTMENT OF TRANSPORTATION, INCLUDING CHANGES AND SUPPLEMENTAL SPECIFICATIONS LISTED IN THE PROPOSAL SHALL GOVERN THIS PROJECT.

NOTES

THE LOCATION OF THE UNDERGROUND UTILITIES SHOWN ON THESE PLANS HAS BEEN OBTAINED BY DILIGENT FIELD CHECKS AND SEARCHES OF AVAILABLE RECORDS. THE CITY OF CINCINNATI DOES NOT GUARANTEE THE ACCURACY OF THE AFOREMENTIONED LOCATION AND ACCEPTS NO RESPONSIBILITY FOR ANY EXPENSE RESULTING FROM ERRORS OR OMISSIONS OF UTILITY LOCATIONS. CONTRACTOR(S) SHALL BE RESPONSIBLE FOR VERIFYING THE LOCATIONS OF ALL UTILITIES IN THE FIELD PRIOR TO THE START OF ANY WORK. NOTIFY PROJECT ENGINEER OF ANY DISCREPANCIES OR CONFLICTS PRIOR TO BEGINNING WORK IN AFFECTED AREA.

INDEX OF SHEETS

TITLE SHEET	1
SCHEMATIC LAYOUT	2
TYPICAL SECTIONS	3
GENERAL NOTES	4-6
MAINTENANCE OF TRAFFIC	7
TYPICAL DETAILS	8-11
PLAN & PROFILE	12
WALK DETAILS	13-14
LIGHTING	15-17
TRAFFIC CONTROL PLAN	18
TRAFFIC SIGNAL PLANS	19-22

MCMILLAN STREET
POSTED SPEED: 25 MPH
DESIGN SPEED: 30 MPH

LEGEND

- LIGHT POLE
- UTILITY POLE
- GUY WIRE
- ELECTRIC MANHOLE
- ELECTRICAL BOX
- TRAFFIC SIGNAL POLE
- GAS VALVE
- FIRE HYDRANT
- WATER VALVE
- WATER METER
- WATER MANHOLE
- TELEPHONE BOX
- TRAFFIC SIGNAL BOX
- SIGN (1 POST)
- SIGN (2 POST)
- TREE
- BUSH
- MAILBOX
- GUARD POST
- FENCE LINE
- WATERLINE
- UNDERGROUND GASLINE
- FIBER OPTIC
- OVERHEAD UTILITY
- UNDERGROUND ELECTRIC
- UNDERGROUND TELECOM
- SWALE
- FLOW ARROW
- CONSTRUCTION LIMITS

UNDERGROUND UTILITIES

Contact Two Working Days
Before You Dig

OHIO811.org
Before You Dig

OHIO811, 8-1-1, or 1-800-362-2764
(Non-members must be called directly)

STANDARD CONSTRUCTION DRAWINGS										SUPPLEMENTAL SPECIFICATIONS	
BP-3.1	1/21/22	MT-095.31	7/19/19	TC-41.20	10/18/13	CIN. STD. DWG. ES-1-1	7/19/04	CIN. STD. DWG. ES-3-8	8/30/04	800	04/21/2023
BP-7.1	1/20/23	MT-101.90	7/17/20	TC-42.20	10/18/13	CIN. STD. DWG. ES-1-2	7/16/04	CIN. STD. DWG. ES-3-9	8/30/04	832	07/15/2022
		MT-105.10	1/17/20			CIN. STD. DWG. ES-2-1	8/29/07	CIN. STD. DWG. ES-6-2	2/1/91		
		MT-110.10	7/19/13	TC-52.10	10/18/13	CIN. STD. DWG. ES-2-2	8/28/07	CIN. STD. DWG. ES-7-3	9/15/04		
				TC-52.20	1/15/21	CIN. STD. DWG. ES-3-1	8/18/04	CIN. STD. DWG. ES-10-1	9/28/04		
				TC-71.10	4/21/23	CIN. STD. DWG. ES-3-2	8/13/04				
						CIN. STD. DWG. ES-3-3	12/10/10				
						CIN. STD. DWG. ES-3-4	8/18/04	CIN. STD. DWG. 120314	4/13/21		
						CIN. STD. DWG. ES-3-5	8/20/04	CIN. STD. DWG. 120361	12/11/08		
						CIN. STD. DWG. ES-3-6	8/24/04				
						CIN. STD. DWG. ES-3-7a	8/27/04	CINCINNATI ACC. 21435	2/1/91		
						CIN. STD. DWG. ES-3-7b	2/11/99	CINCINNATI ACC. 27256	1/7/03		
						CIN. STD. DWG. ES-3-7c	2/03/05				

PLAN INSERT SHEETS

ENGINEER'S SEAL:

ADDENDUM		
NUMBER	DATE	SHEETS REVISED
1	5/9/2024	9, 15, 16, 17, 20, 21, 22

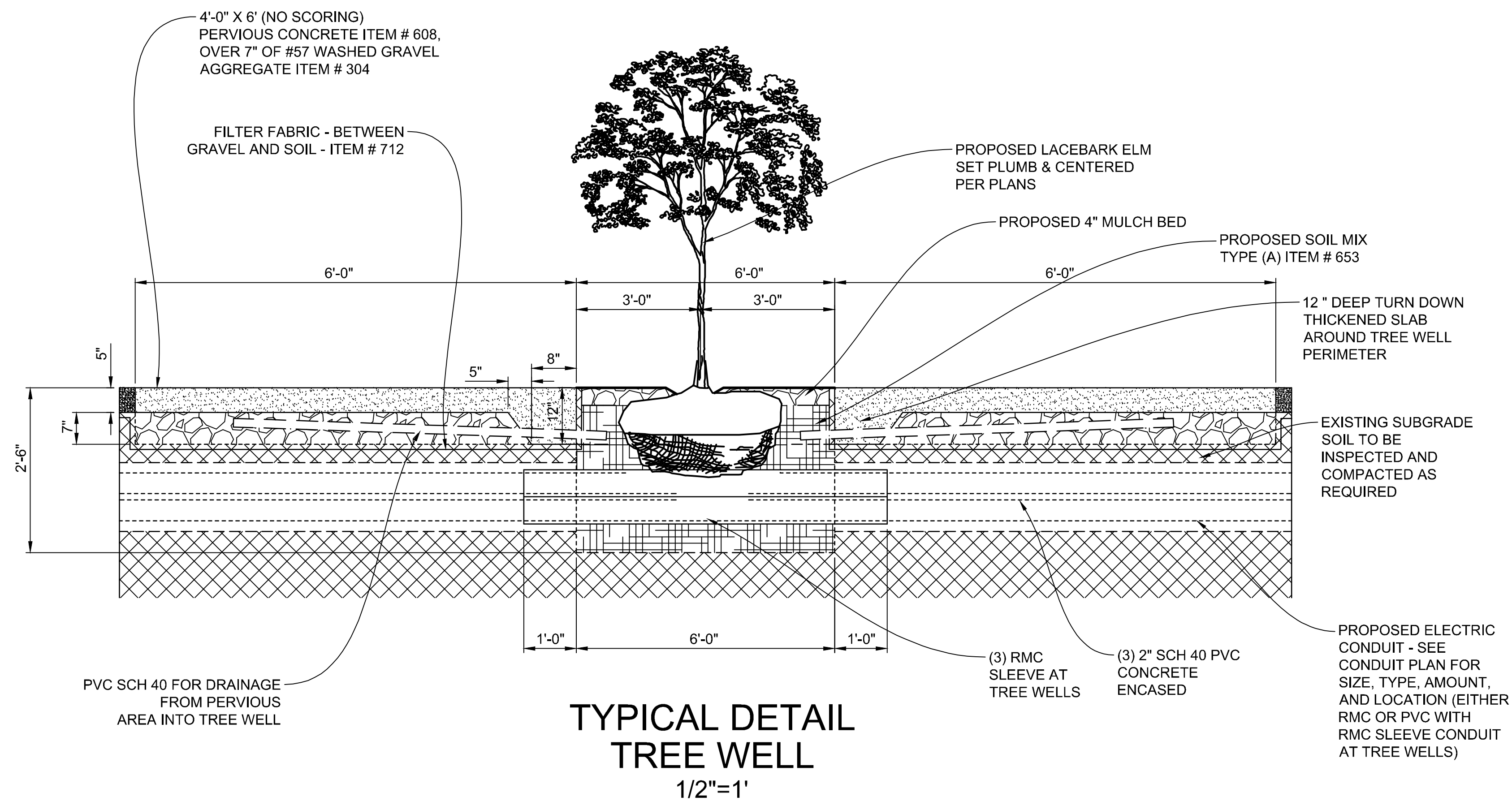
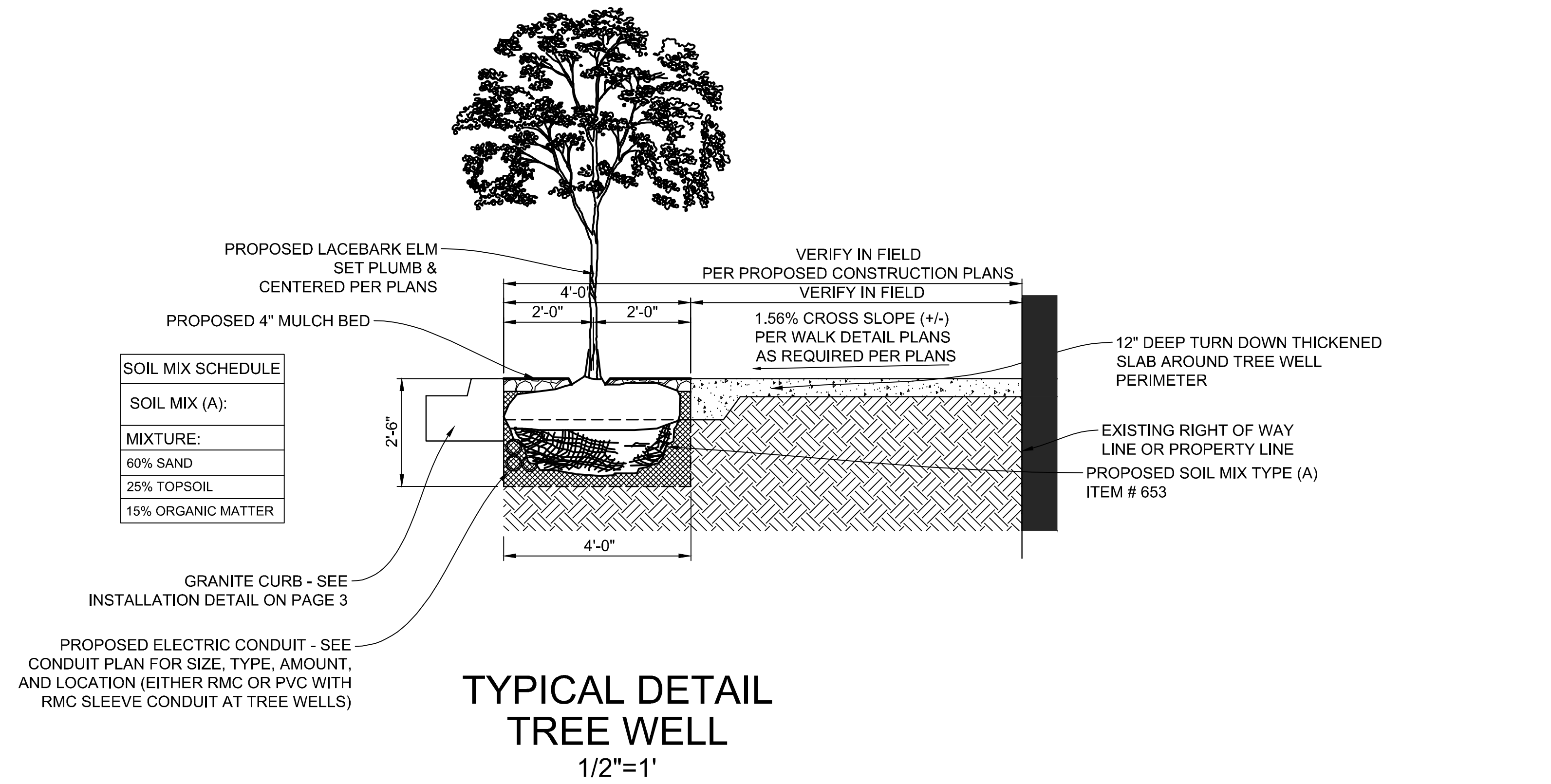
PLANS PREPARED BY:



CIVIL ENGINEERING SURVEYING LANDSCAPE ARCHITECTURE
www.kleingers.com
6219 Centre Park Dr.
West Chester, OH 45069
513.779.7851

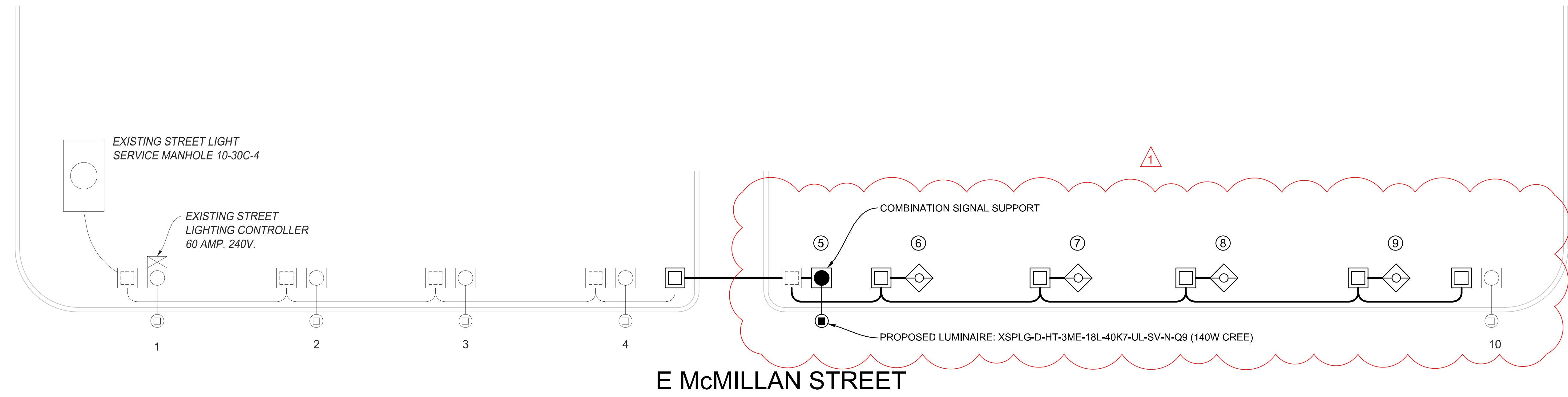
ITEM 661 - STREET TREE, AS PER PLAN
 TREES SHALL BE LACEBARK ELM. THE CONTRACTOR SHALL
 OBTAIN A NEW PLANTING PERMIT FROM URBAN FORESTRY.

CONTACT:
 CINCINNATI PARK BOARD - URBAN FORESTRY
 MARIANNE PRUE
 URBAN FORESTRY SPECIALIST
 1012 LUDLOW AV.
 CINCINNATI, OHIO 45223
 513-861-9070

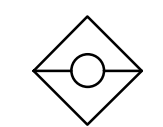
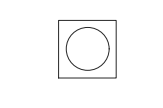

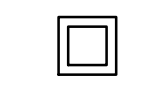
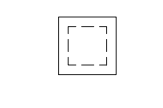

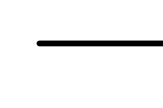


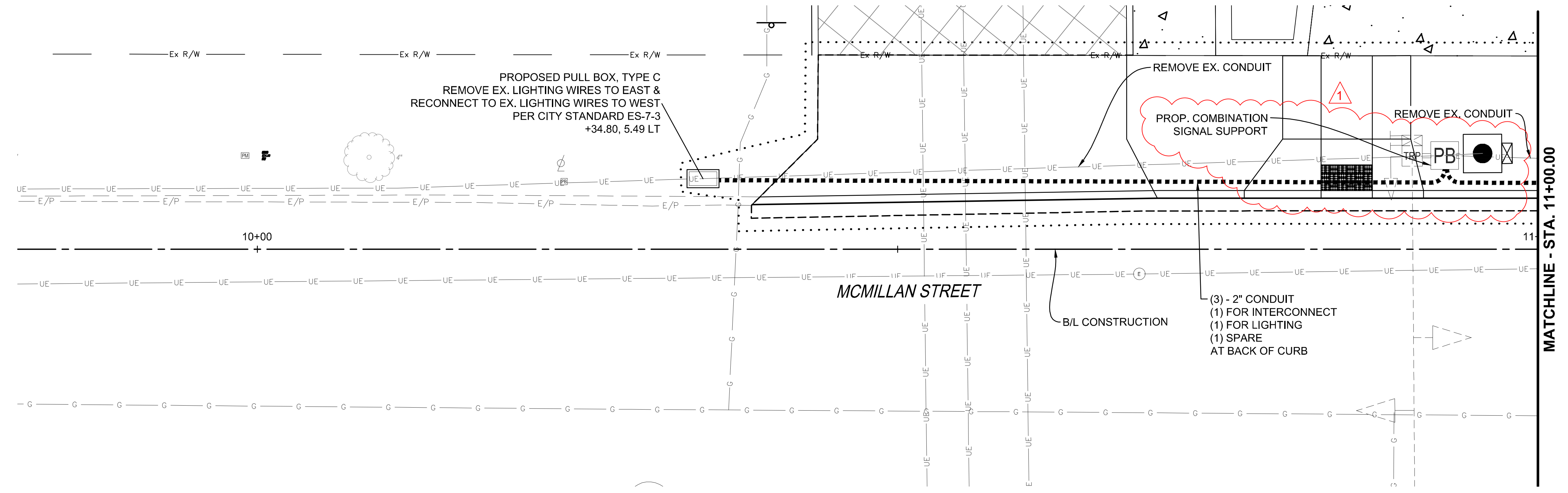
GILBERT AVENUE

KEMPER LANE



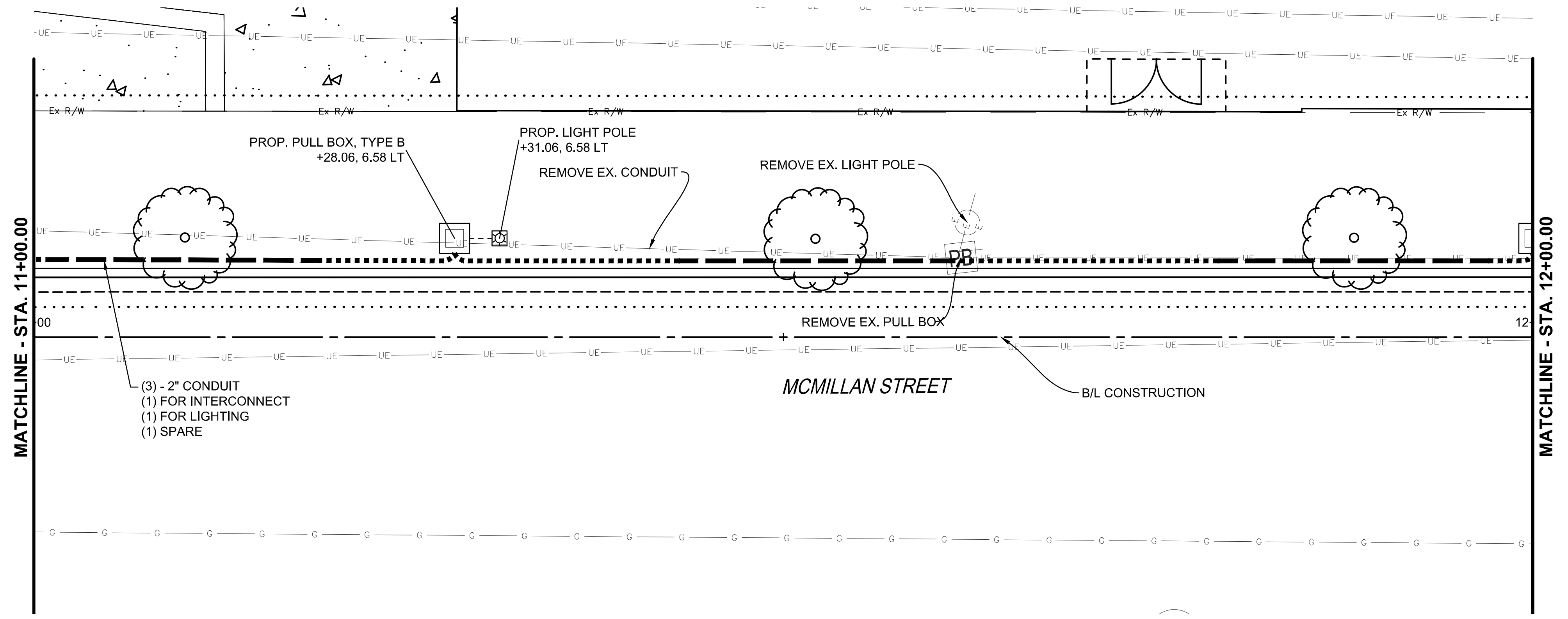
LEGEND

-  PROPOSED LIGHT POLE & FIXTURE, SEE SHEET 10
-  EXISTING LIGHT POLE
-  EXISTING CREE XSPLG 110 WATT
-  PROPOSED PULL BOX
-  EXISTING PULL BOX
-  EXISTING CONDUIT & WIRING
-  PROPOSED CONDUIT (PER SHEETS 16-17) & 3 #6 AWG WIRE

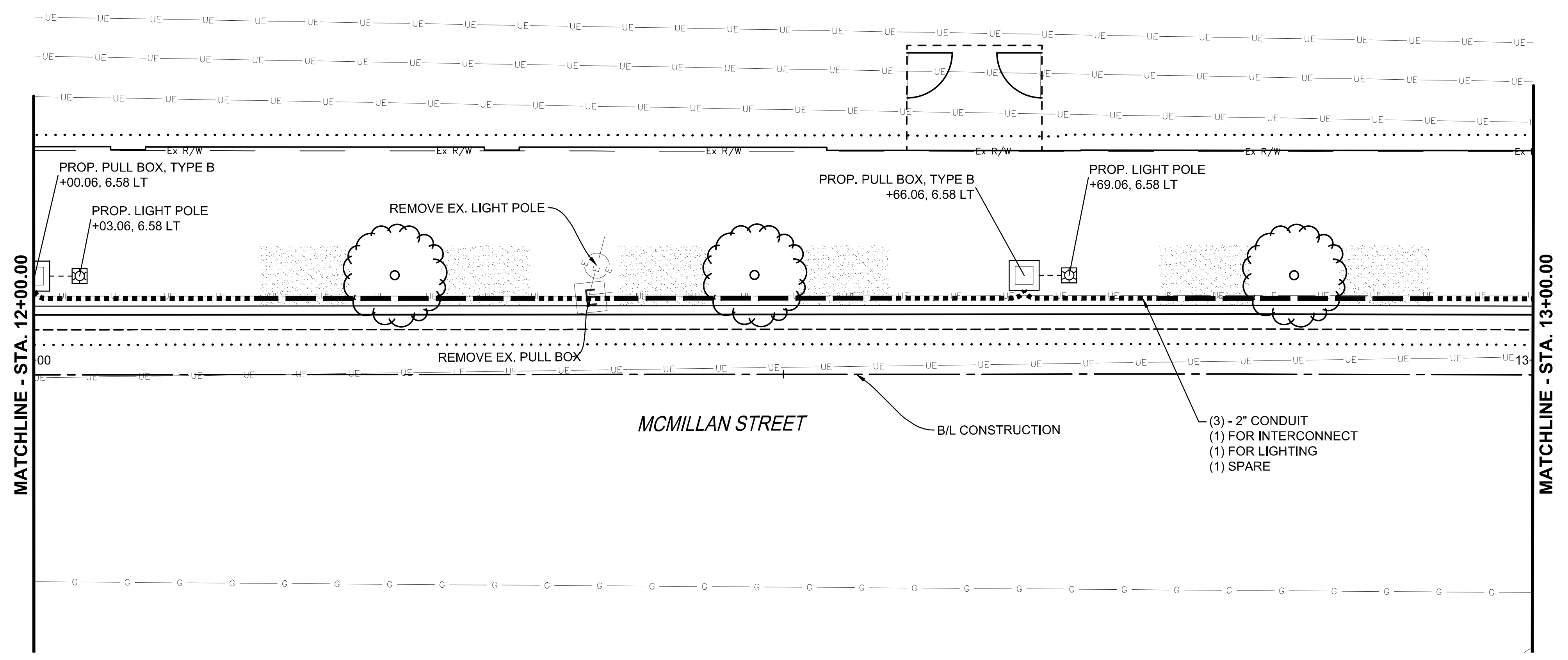


CONDUIT LEGEND

- CONCRETE ENCASED SCH 40 PVC
- PVC WITH RMC SLEEVE CONDUIT (WITHIN TREE WELLS)

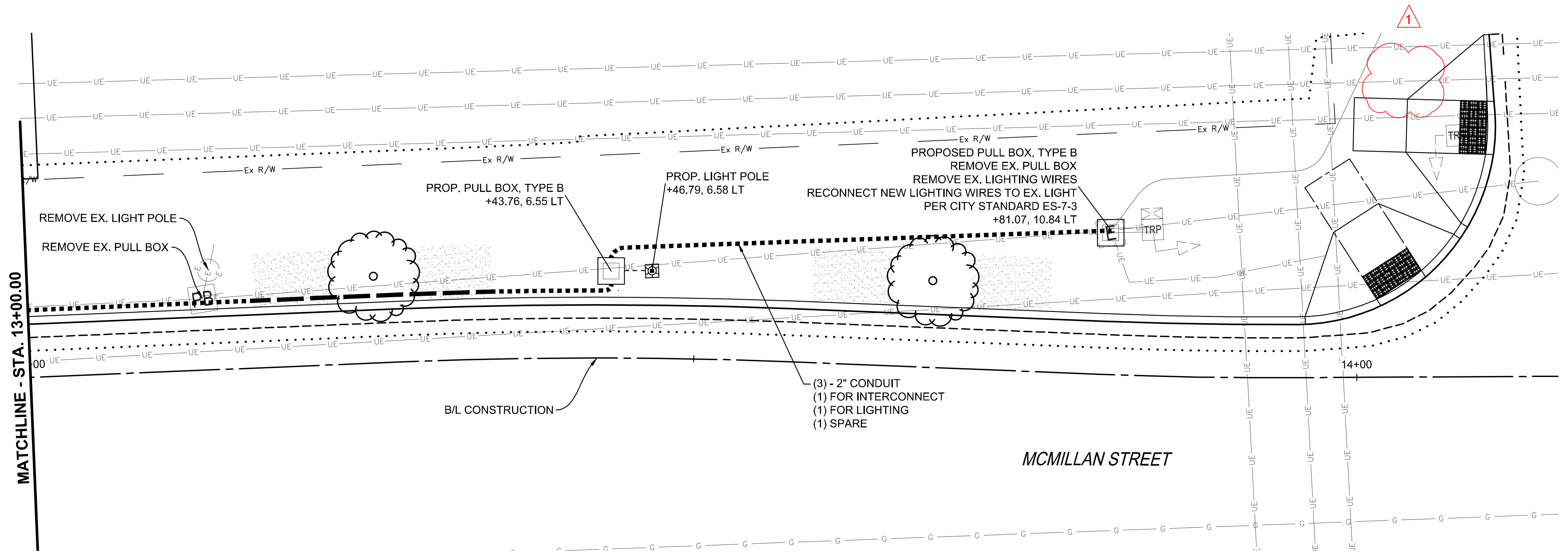


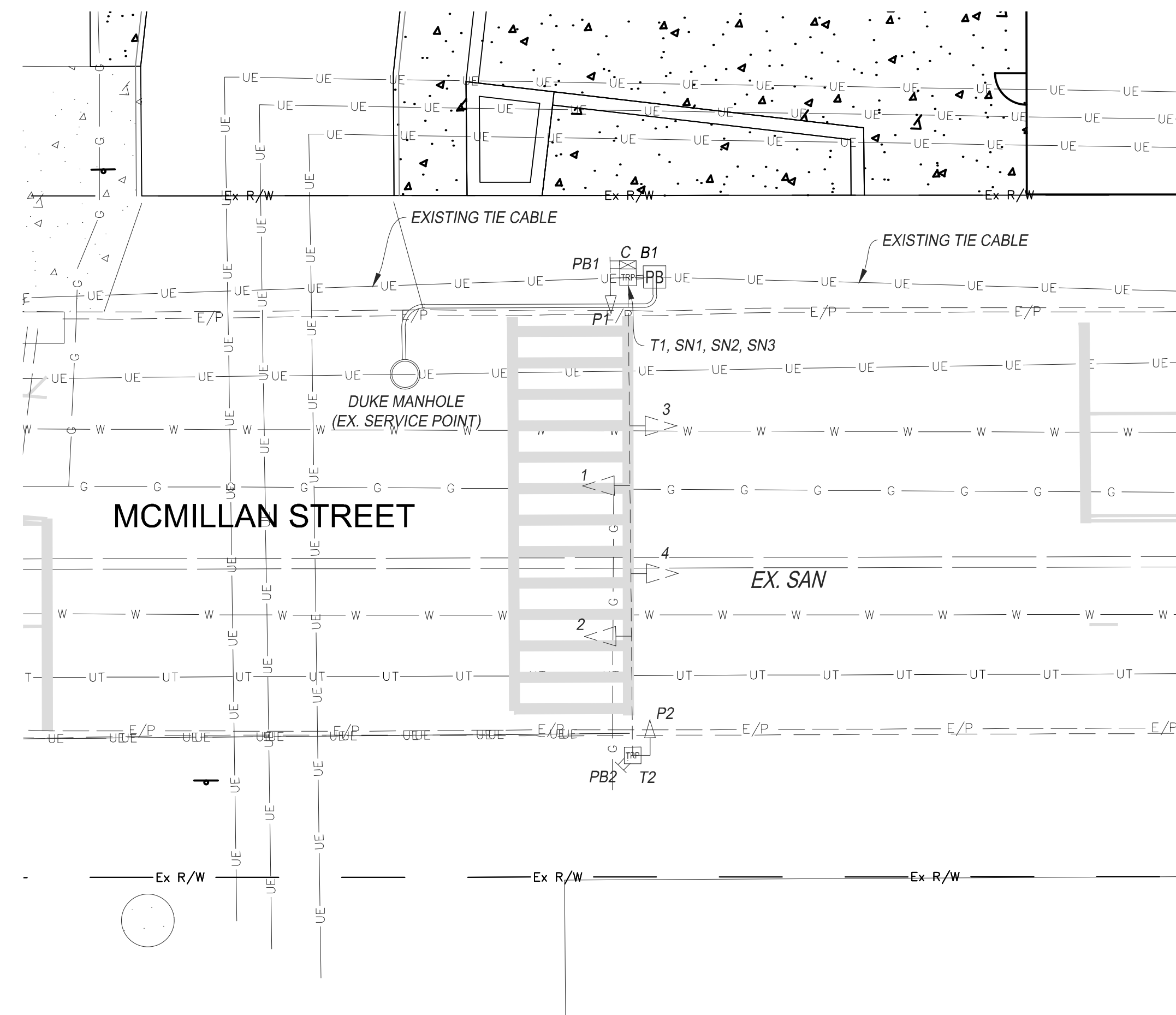
H:\2020\20200810091_DWG_Sheets\20200810091.dwg, 5/7/2024 4:22:45 PM, E:\m...



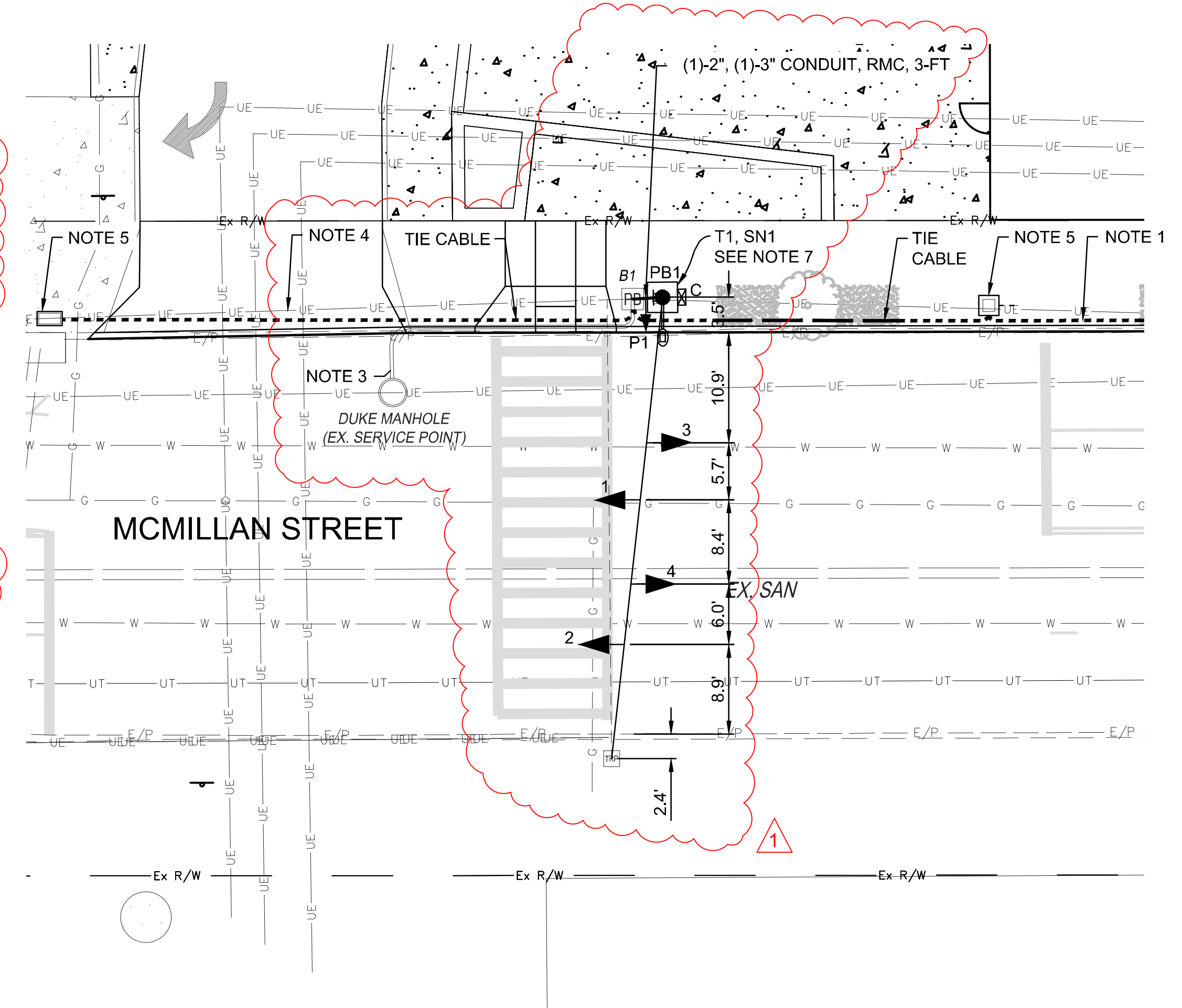
CONDUIT LEGEND

- CONCRETE ENCASED SCH 40 PVC
- PVC WITH RMC SLEEVE CONDUIT (WITHIN TREE WELLS)





EXISTING TRAFFIC SIGNAL
 SCALE: 1" = 10'



PROPOSED TRAFFIC SIGNAL
 SCALE: 1" = 10'

- NOTES**
- SEE LIGHTING SHEETS 16-17 FOR DETAILS ON CONDUIT RUN. CONDUIT RUN SHALL RESERVE (1)-2" CONDUIT FOR INTERCONNECT (TIE CABLE) BETWEEN THE MCMILLAN CROSSING AND THE KEMPER INTERSECTION.
 - CONTRACTOR SHALL REUSE EXISTING INTERCONNECT (TIE CABLE) BETWEEN THE CONTROLLER LOCATED AT THE MCMILLAN CROSSING AND THE CONTROLLER AT THE KEMPER INTERSECTION. LIKEWISE, CONTRACTOR SHALL REUSE EXISTING INTERCONNECT (TIE CABLE) BETWEEN THE CONTROLLER LOCATED AT THE MCMILLAN CROSSING AND THE CONTROLLER AT THE GILBERT INTERSECTION. CONTRACTOR SHALL CONNECT REUSED TIE CABLE TO THE EXISTING SECTIONALIZERS AT ALL SIGNAL LOCATIONS, IF EXISTING TIE CABLE IS TOO SHORT A NEW TIE CABLE SHALL BE REQUIRED. NO SPLICES IN TIE CABLE ARE PERMITTED.
 - NO ADJUSTMENT TO LOCATION OF POWER SERVICE. RECONNECTION TO EXISTING SERVICE POINT SHALL BE MADE.
 - CONTRACTOR TO REMOVE EXISTING CONDUIT PER LIGHTING PLAN ON SHEETS 16-17.
 - CONTRACTOR TO INSTALL NEW PULL BOXES FOR LIGHTING CIRCUIT PER LIGHTING PLANS ON SHEETS 16-17.
 - CONTRACTOR TO REUSE MESSENGER WIRE AND SIGNAL CABLE WHERE POSSIBLE.
 - CONTRACTOR TO TAKE NECESSARY MEASURES TO STABILIZE EXISTING STRAIN POLE T1 DURING INSTALLATION OF FOUNDATION FOR PROPOSED STRAIN POLE T1.

EXISTING EQUIPMENT INVENTORY

1, 2, 3, 4	TRAF. SIG. HD., 3 SECT., VERT., 12" RYG, LED	(REUSE)
P1	PEDESTRIAN SIGNAL, 1 SECT., 16" LED	(REMOVE)
P2	PEDESTRIAN SIGNAL, 1 SECT., 16" LED	(TO REMAIN)
PB1	PEDESTRIAN PUSHBUTTON W/ ASSOC. SIGNS	(REMOVE)
PB2	PEDESTRIAN PUSHBUTTON W/ ASSOC. SIGNS	(TO REMAIN)
T1	STEEL POLE, 9"x27", ANCHOR BASE	(REMOVE)
T2	STEEL POLE, 9"x28", ANCHOR BASE	(TO REMAIN)
B1	EXISTING PULL BOX, 18"x18", TYPE "B"	(TO REMAIN)
C	POLE MOUNTED TRAFFIC CONTROLLER	(REUSE)
SN1	EXISTING SIGN, "PUSH BUTTON FOR WALK LIGHT", WHITE	(REMOVE)
SN2	EXISTING SIGN, "LOOK", YELLOW	(REMOVE)
SN3	EXISTING SIGN, PARKING DESIGNATION, WHITE	(REMOVE)

PROPOSED EQUIPMENT INVENTORY

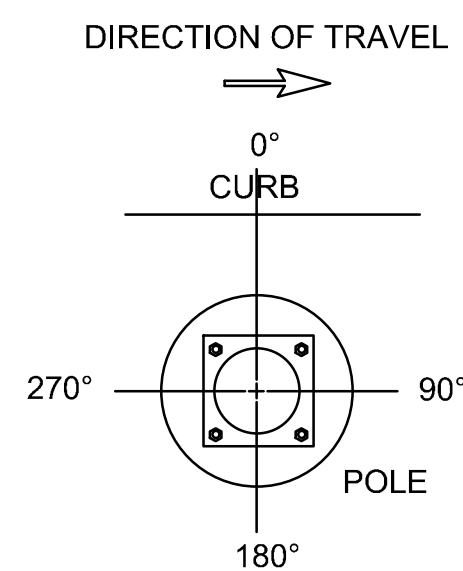
1, 2, 3, 4	TRAF. SIG. HD., 3 SECT., VERT., 12" RYG, LED	(RELOCATED)
P1	PEDESTRIAN SIGNAL, 1 SECT., 16" LED, CLAMSHELL MOUNTING	(NEW)
PB1	PEDESTRIAN PUSHBUTTON W/ ASSOC. SIGNS	(NEW)
T1	STEEL POLE, 11"x30", (38045), ANCHOR BASE, 4-FT MAST ARM, 140W CREE XSPLG	(NEW)
C	POLE MOUNTED TRAFFIC CONTROLLER	(RELOCATED)
B1	EXISTING PULL BOX, 18"x18", TYPE "B"	(TO REMAIN)
SN1	SIGN, "PUSH BUTTON FOR WALK LIGHT", WHITE	(NEW)

LEGEND

- ▶ TRAFFIC SIGNAL 3 UNIT HEAD
- ↑ PEDESTRIAN SIGNAL HEAD
- SIGNAL STRAIN POLE
- ⊠ POLE-MOUNTED TRAFFIC CONTROLLER
- ⊞ PEDESTRIAN PUSH BUTTON
- PEDESTAL SUPPORT

MATERIAL SCHEDULE																				
VEHICLE SIGNAL HEADS (REUSED)						VIDEO DETECTOR		PEDESTRIAN SIGNALS												
NO	1	2	3	4	5	6														
8 IN.																				
12 IN.	R	R	R	R																
	Y	Y	Y	Y																
	G	G	G	G																
POLE DATA																				
POLE NO.	DETAIL	GAUGE	SHAFT SIZE (INxFT)	FOUND. TYPE	PUSH BUTTONS						CABLE ENTRANCE (ANGLE°)	SPAN WIRE ATTACH. (HEIGHT IN FT.)	HANDHOLE	CONTROLLER	LUMINAIRE					
					PB1	PB2	P1	P2	P3	P4						P5	P6			
T1	38045	0	11x30	FDN-10	90°								0°	24.43	180°	270°	0°			
T2	EXISTING		9x28	Ex.	Ex.								Ex.	Ex.	Ex.					
ANGLE OF ORIENTATION (0°) OR MOUNTING HEIGHT (FT)																				

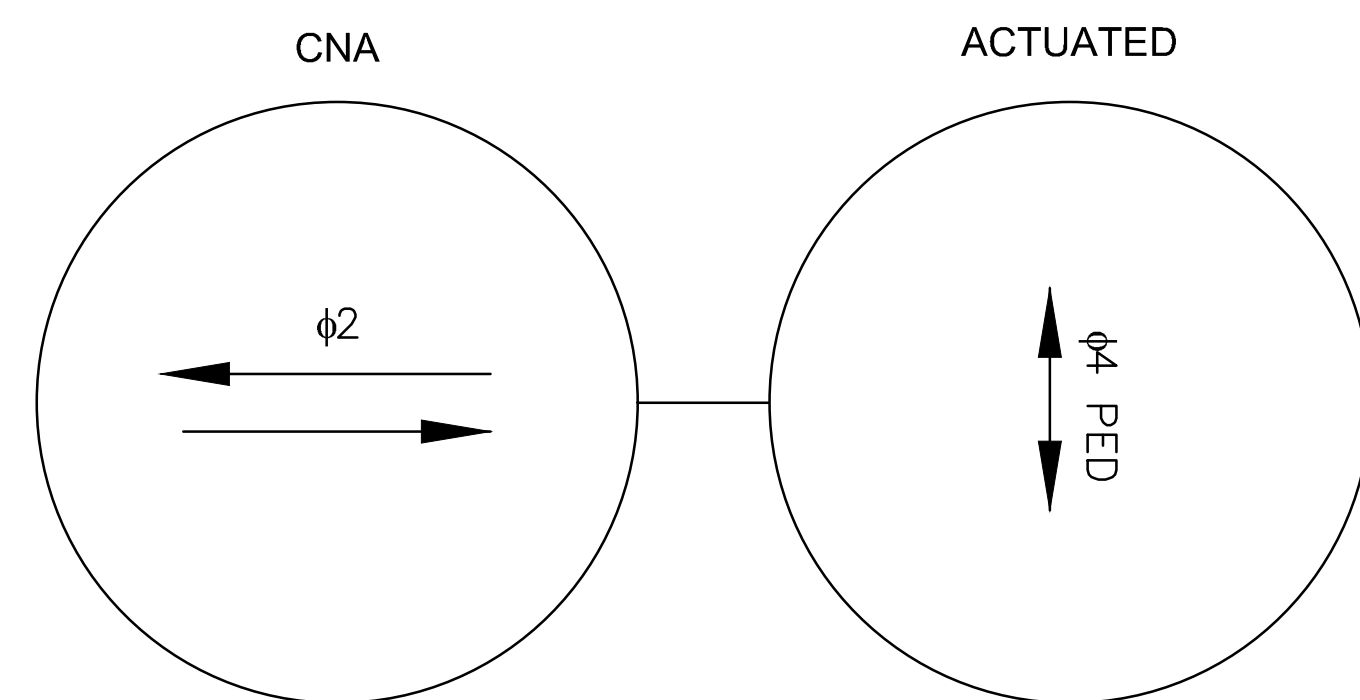
TYP. POLE ORIENTATION



CABLE SCHEDULE				
CABLE NO.	CONNECTING DEVICES	CABLE TYPE	CABLE ROUTING	
1	TRAFFIC SIGNAL 1 & 2	7C#14	TS2-TS1-T1-CONT.	90
2	TRAFFIC SIGNAL 3 & 4	7C#14	TS4-TS3-T1-CONT.	85
3	PEDESTRIAN SIGNAL P1	5C#14	P1-T1-CONT.	15
4	PEDESTRIAN SIGNAL P2	5C#14	P2-T2-T1-CONT.	100
5	PEDESTRIAN PUSHBUTTON PB1	2C#14	PB1-T1-CONT.	10
6	PEDESTRIAN PUSHBUTTON PB2	2C#14	PB2-T2-T1-CONT.	105
7	MESSANGER CABLE	5/16"	T2-T1	45
8	POWER CABLE	3C#6	B1-T1-CONT.	20
9	POLE & BRACKET LIGHTING CABLE	3C#6	CIRCUIT-T1-LUMINAIRE-T1-CIRCUIT	90

CONTRACTOR TO REUSE SIGNAL CABLE AND MESSANGER WIRE WHERE POSSIBLE.

- (1) CONTRACTOR TO REUSE VEHICULAR SIGNAL HEADS, POLE T2, AND SIGNAL EQUIPMENT ATTACHED TO POLE T2 AS INDICATED IN THE PLANS.
- (2) TRANSFER OF ALL EQUIPMENT AND CONTROLLER UNIT TO NEW POLE IS REQUIRED TO BE COMPLETED IN ONE WORKING DAY.

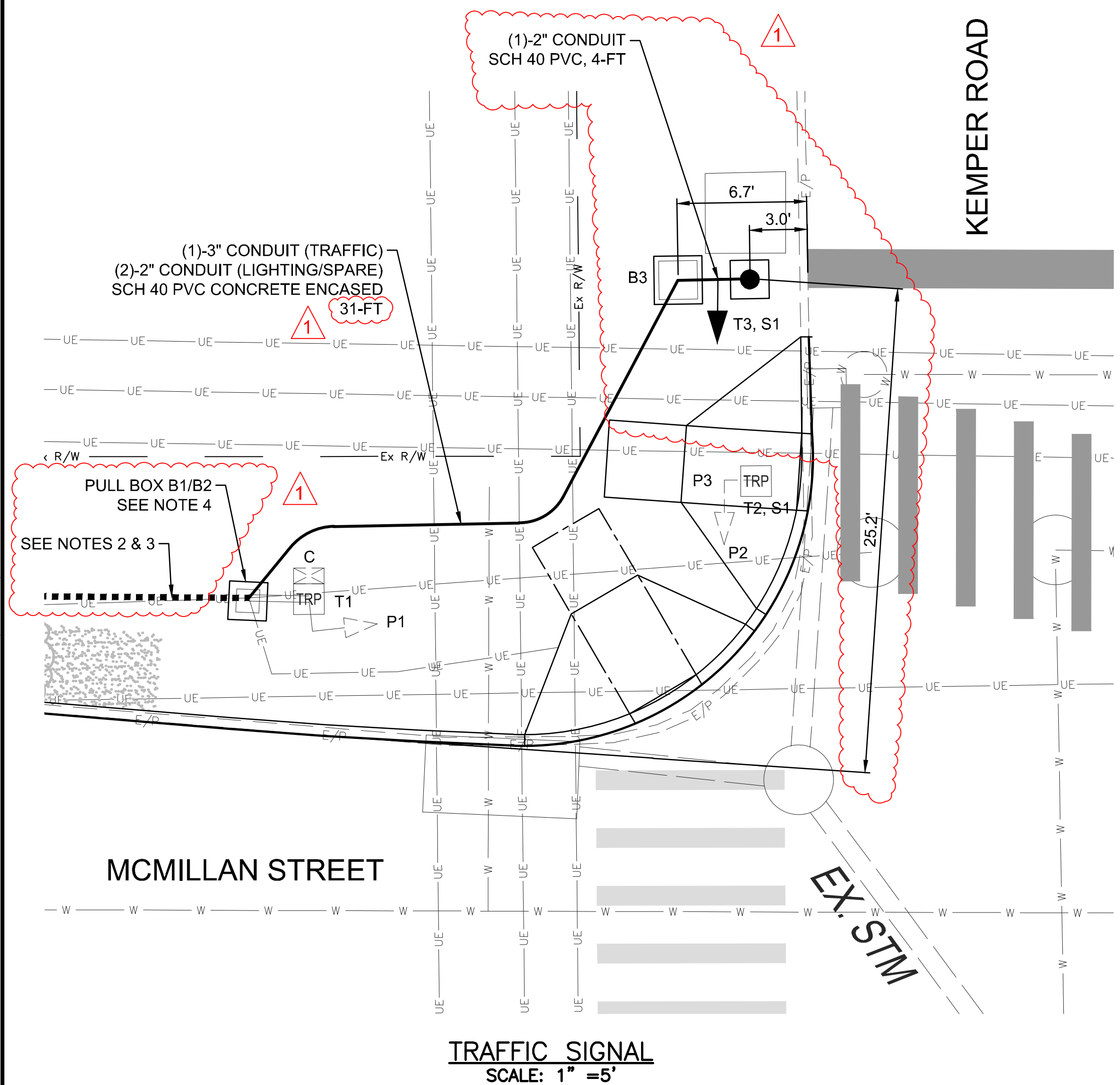


PHASING DIAGRAM

FIELD WIRING HOOKUP CHART

SIGNAL HEAD	INDICATION	FIELD TERMINAL	FLASH
1, 2, 3, 4 (EB & WB)	R	φ2 R	Y
	Y	φ2 Y	
	G	φ2 G	
PEDESTRIAN MOVEMENTS			
P4 (CROSSING)	W	LS 4P G	OUT
	DW	LS 4P R	

LS = LOAD SWITCH

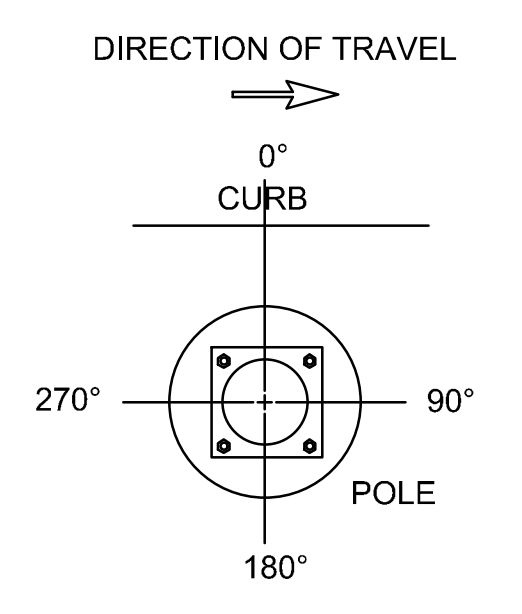


NOTES

- SHOP DRAWINGS SHALL BE SUBMITTED TO DOTE PRIOR TO PURCHASING MATERIALS (INCLUDING CONNECTOR KITS IN LIGHTING PULL BOXES).
- SEE LIGHTING SHEETS 16-17 FOR DETAILS ON CONDUIT RUN. CONDUIT RUN SHALL RESERVE (1)-2" CONDUIT FOR INTERCONNECT (TIE CABLE) BETWEEN THE MCMILLAN CROSSING AND THE KEMPER INTERSECTION.
- REMOVE EXISTING 12 PAIR CTCS CABLE FROM THE EXISTING CONDUIT RUN. CTCS CABLE RUN FROM SECTIONALIZER ON T1 AT KEMPER INTERSECTION TO PULL BOX B1 AT THE MID-BLOCK PEDESTRIAN SIGNAL. REINSTALL EXISTING 12 PAIR CTCS CABLE ONCE NEW CONDUIT RUN IS INSTALLED. SUPPLY NEW CTCS CABLE IF EXISTING CABLE LENGTH IS TOO SHORT TO MAKE CONNECTION. NO SPLICES WILL BE PERMITTED.
- CONTRACTOR SHALL REPLACE EXISTING PULL BOX WITH TYPE B PULL BOX PER THE LIGHTING PLANS ON SHEETS 16-17.
- EXISTING SIGN "S1", "LOOK", YELLOW SHALL BE RELOCATED FROM THE EXISTING PEDESTRIAN SIGNAL PEDESTAL T2 TO THE PROPOSED PEDESTRIAN SIGNAL PEDESTAL T3.

VEHICLE SIGNAL HEADS							VIDEO DETECTOR	PEDESTRIAN SIGNALS						CABLE ENTRANCE (ANGLE°)	SPAN WIRE ATTACH. (HEIGHT IN FT.)	HANDHOLE	CONTROLLER	DISCONNECT	
NO	1	2	3	4	5	6		P1	P2	P3	P4	P5	P6						
8 IN.																			
12 IN.																			
POLE NO.	DETAIL				GAUGE	SHAFT SIZE (INxFT)	FOUND. TYPE	PUSH BUTTONS						ANGLE OF ORIENTATION (0°) OR MOUNTING HEIGHT (FT.)					
T3	1045					4x10	FDN-25												180°

TYP. POLE ORIENTATION



EQUIPMENT INVENTORY

B1	EXISTING PULL BOX	(REMOVED PER LIGHTING)
P1	PED. SIG., 1 SECT., 16" LED	(TO REMAIN)
C	POLE MOUNTED CONTROLLER	(TO REMAIN)
T1	STEEL POLE, ANCH. BASE, "LT" TYPE, 9"x27"	(TO REMAIN)
T2	PEDESTRIAN SIGNAL PEDESTAL	(REMOVE)
P2	PED. SIG., 1 SECT., 16" LED	(REMOVE)
S1	EXISTING SIGN, "LOOK", YELLOW	(RELOCATED)
T3	PEDESTRIAN SIGNAL PEDESTAL 1045	(NEW)
P3	PEDESTRIAN SIGNAL, 1 SECT., 16" LED CLAMHELL MOUNTING	(NEW)
B2	PULL BOX, TYPE B	(NEW PER LIGHTING)
B3	TYPE C PULL BOX	(NEW)

LEGEND

- ↑ PEDESTRIAN SIGNAL HEAD
- TRAFFIC PULL BOX
- PEDESTAL SUPPORT

CABLE SCHEDULE				
CABLE NO.	CONNECTING DEVICES	CABLE TYPE	CABLE ROUTING	
1	PEDESTRIAN SIGNAL P3	7C#14	T3-B3-B2-T1-C	80