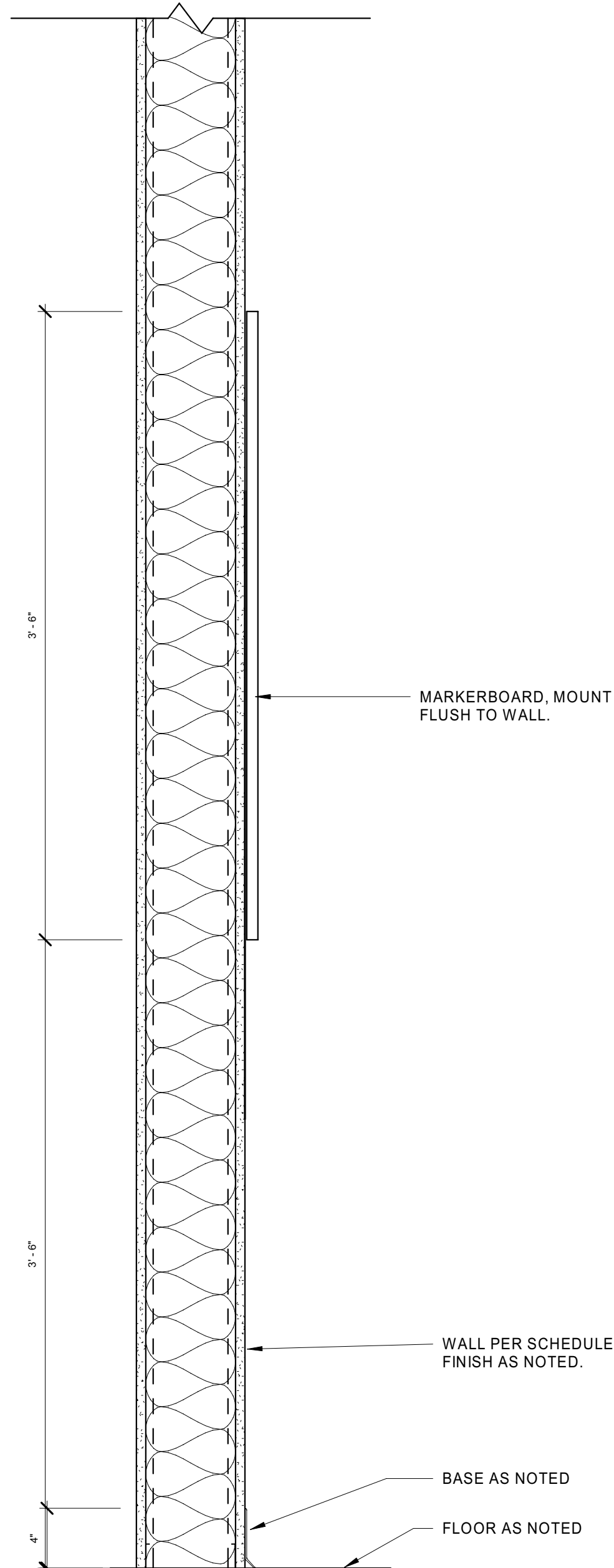
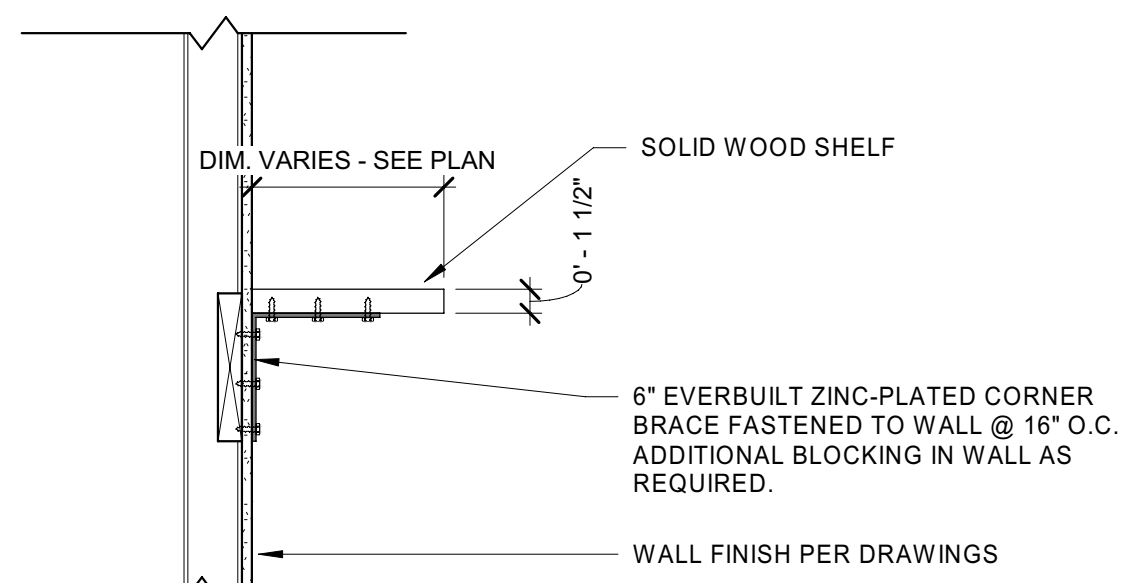


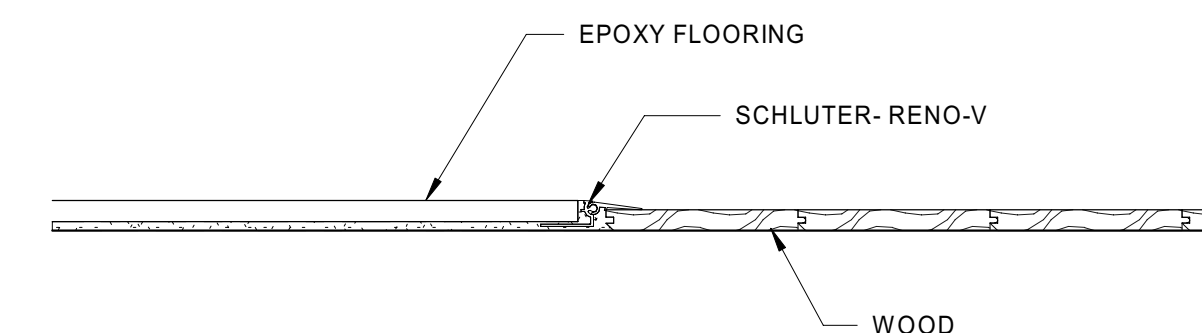
REVISION SCHEDULE		
Rev. #	Revision Description	Issue Date
1	ADD #1	04-13-2022
2	ADD #2	05-06-2022
3	For Construction	05-13-2022
5	ADD #4	06-20-2022
8	REV #1	11-18-2022
9	ADD #7	12-07-2022



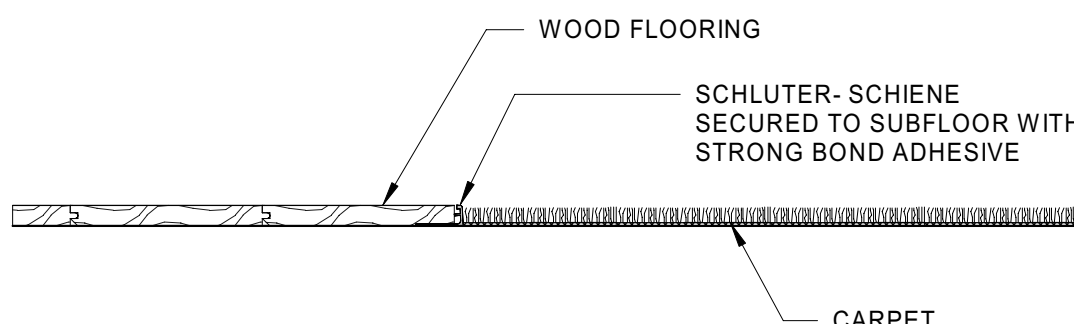
10 Detail
MARKERBOARD DETAIL
A5.31 1 1/2" = 1'-0"



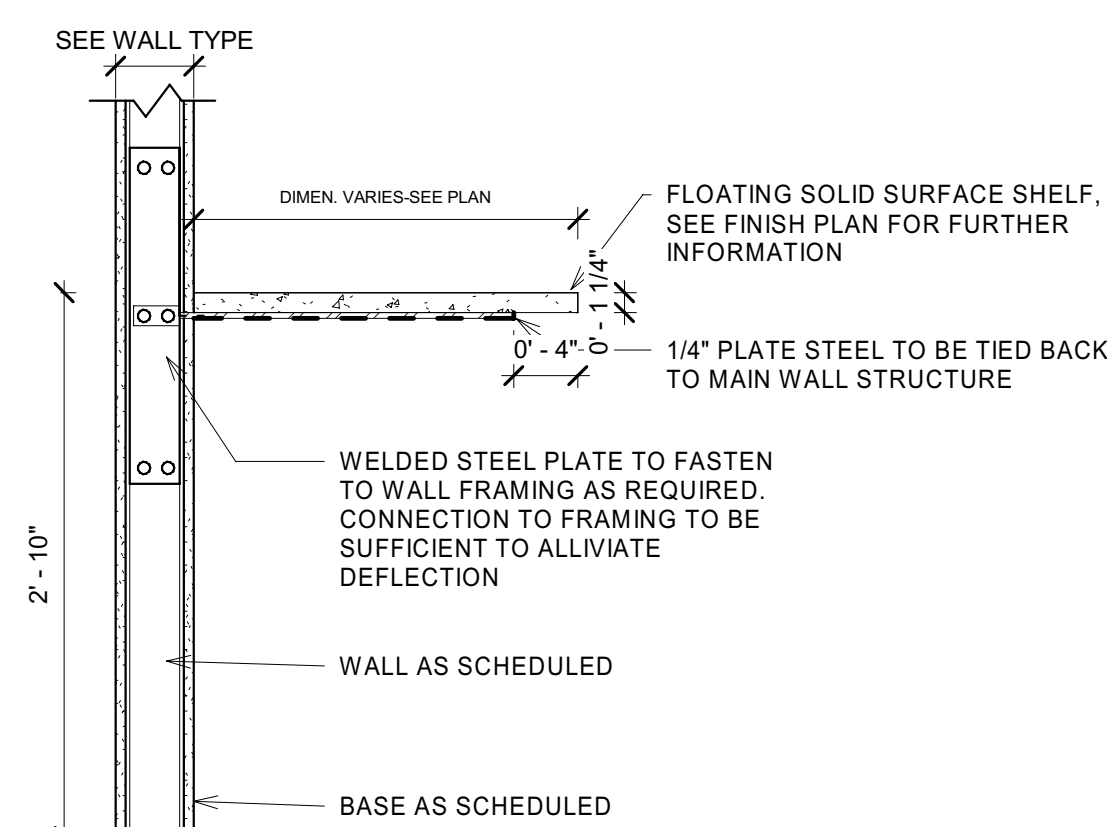
9 Detail TYP
WOOD WALL SHELF
A5.31 1" = 1'-0"



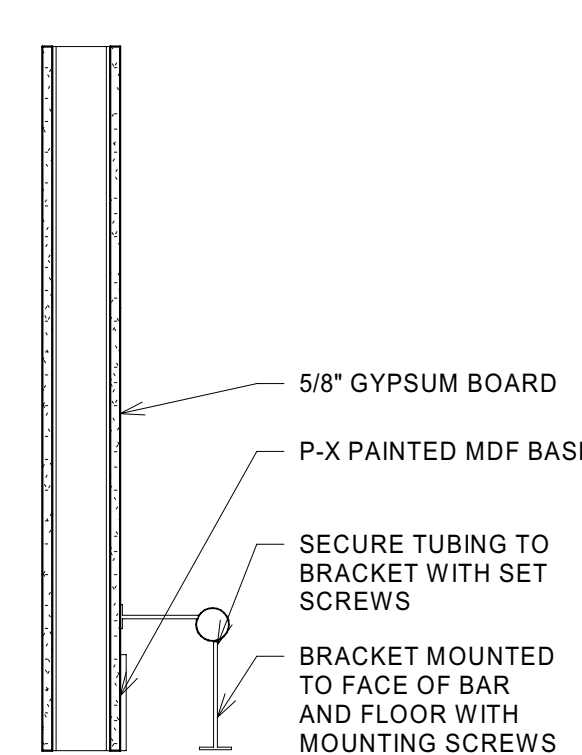
14 Detail
FLOOR TRANSITION DETAIL
A5.31 3" = 1'-0"



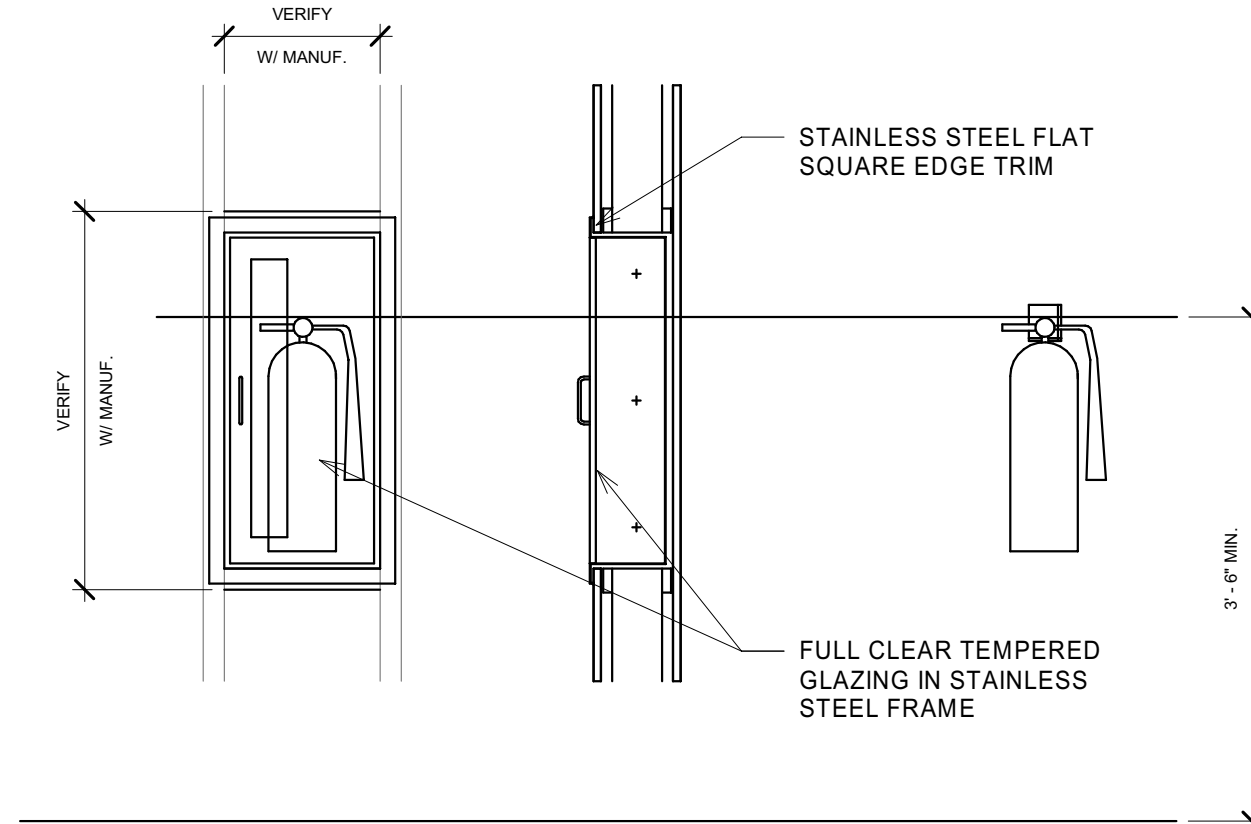
13 Detail
FLOOR TRANSITION DETAIL
A5.31 3" = 1'-0"



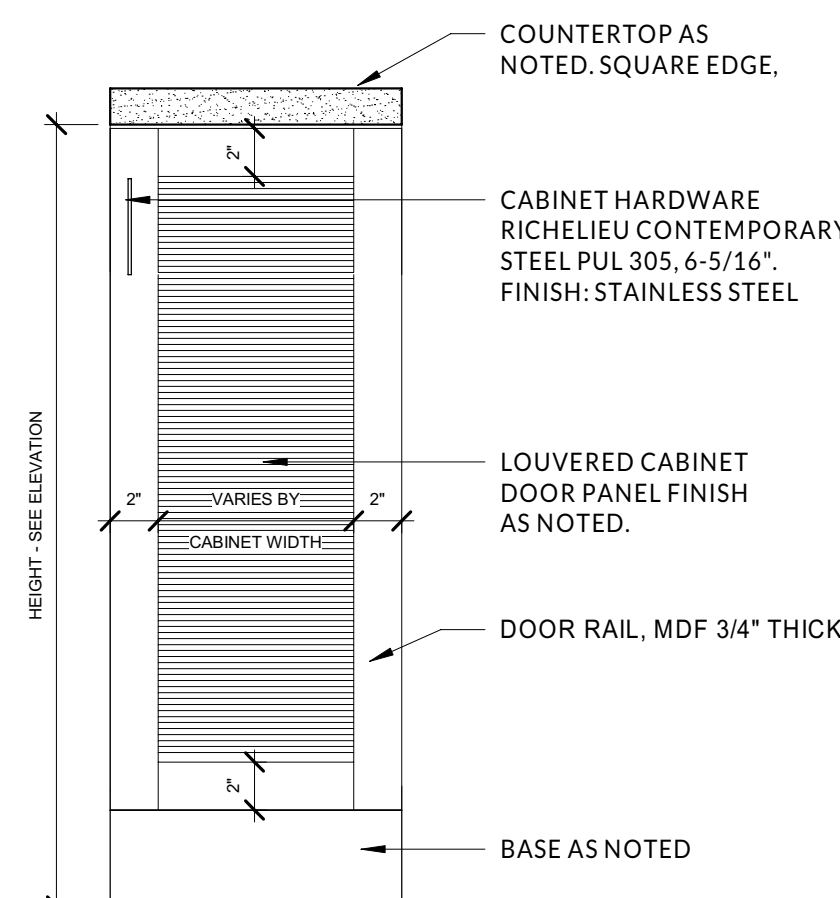
8 Detail
NOOK LEDGE
A5.31 1" = 1'-0"



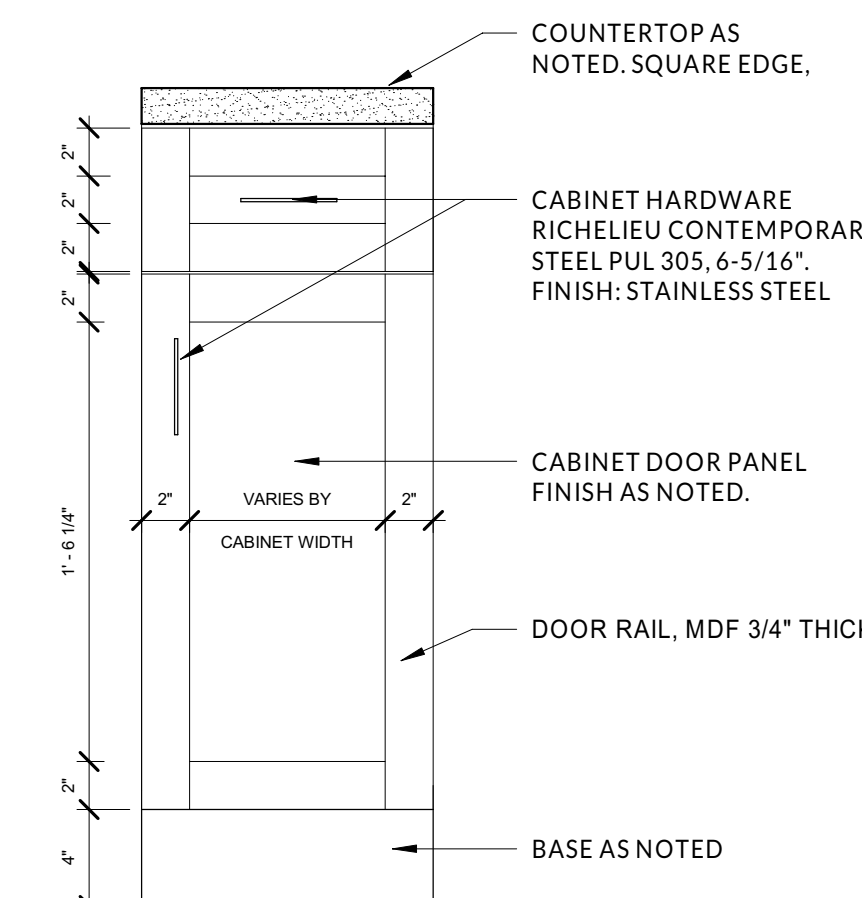
12 Detail
Bar Footrail
A5.31 1" = 1'-0"



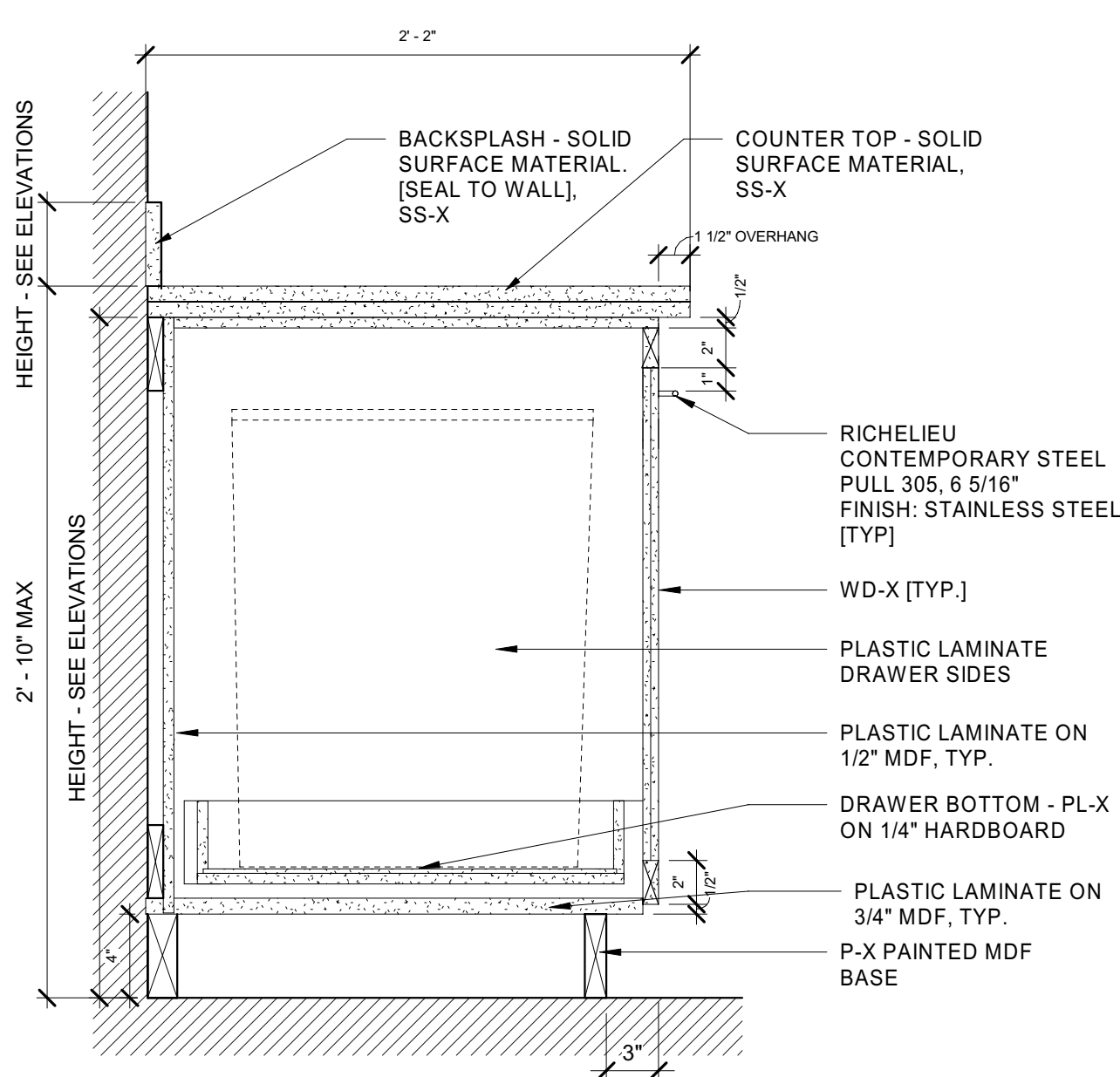
11 Detail
FIRE EXTINGUISHER CABINET DETAILS
A5.31 3/4" = 1'-0"



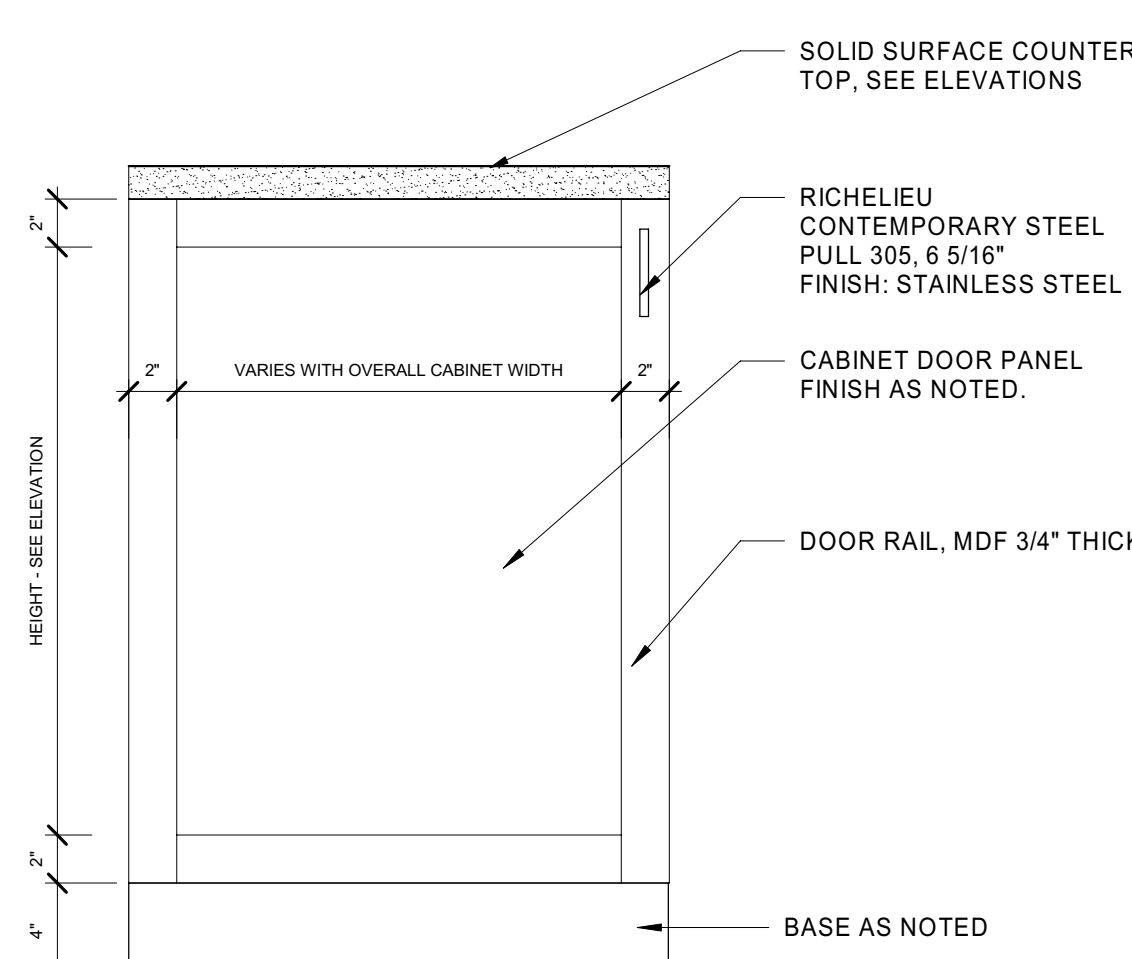
7 Detail TYP
TYP. BASE CABINET LOUVERED FACE
A5.31 1 1/2" = 1'-0"



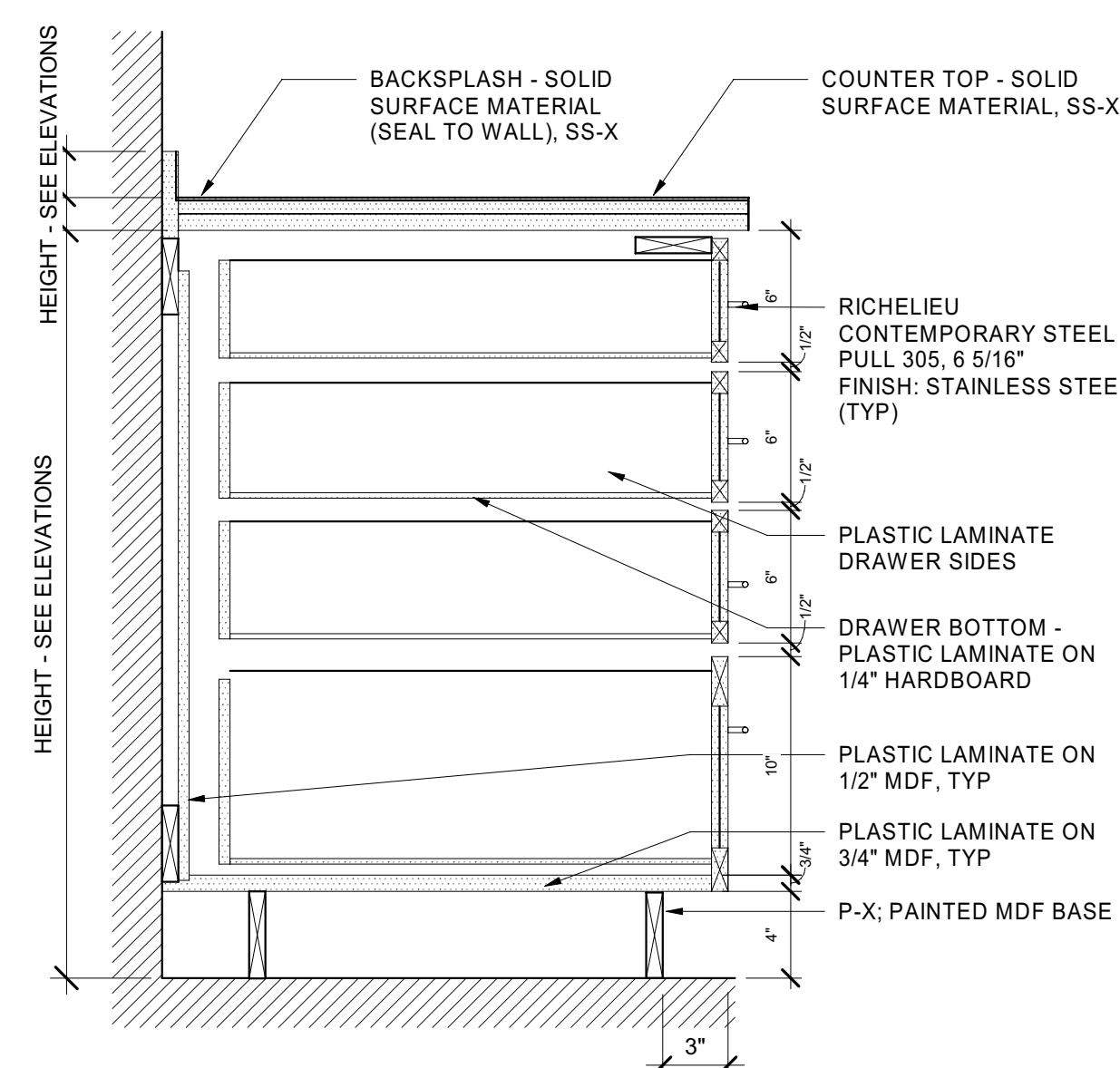
6 Detail
TYP. BASE CABINET FACE
A5.31 1 1/2" = 1'-0"



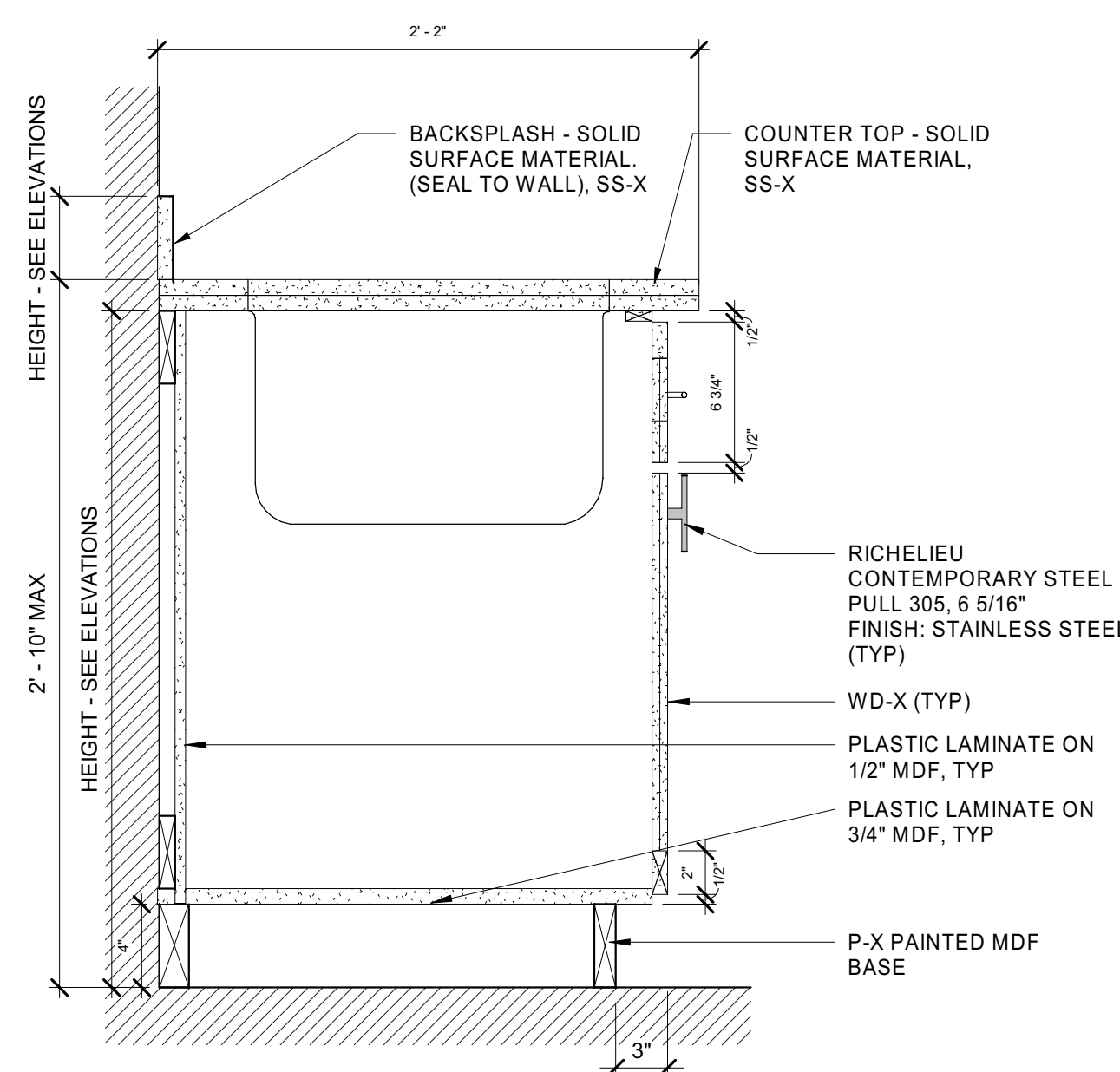
5 Detail TYP
TYP. BASE TRASH DRAWER
A5.31 1 1/2" = 1'-0"



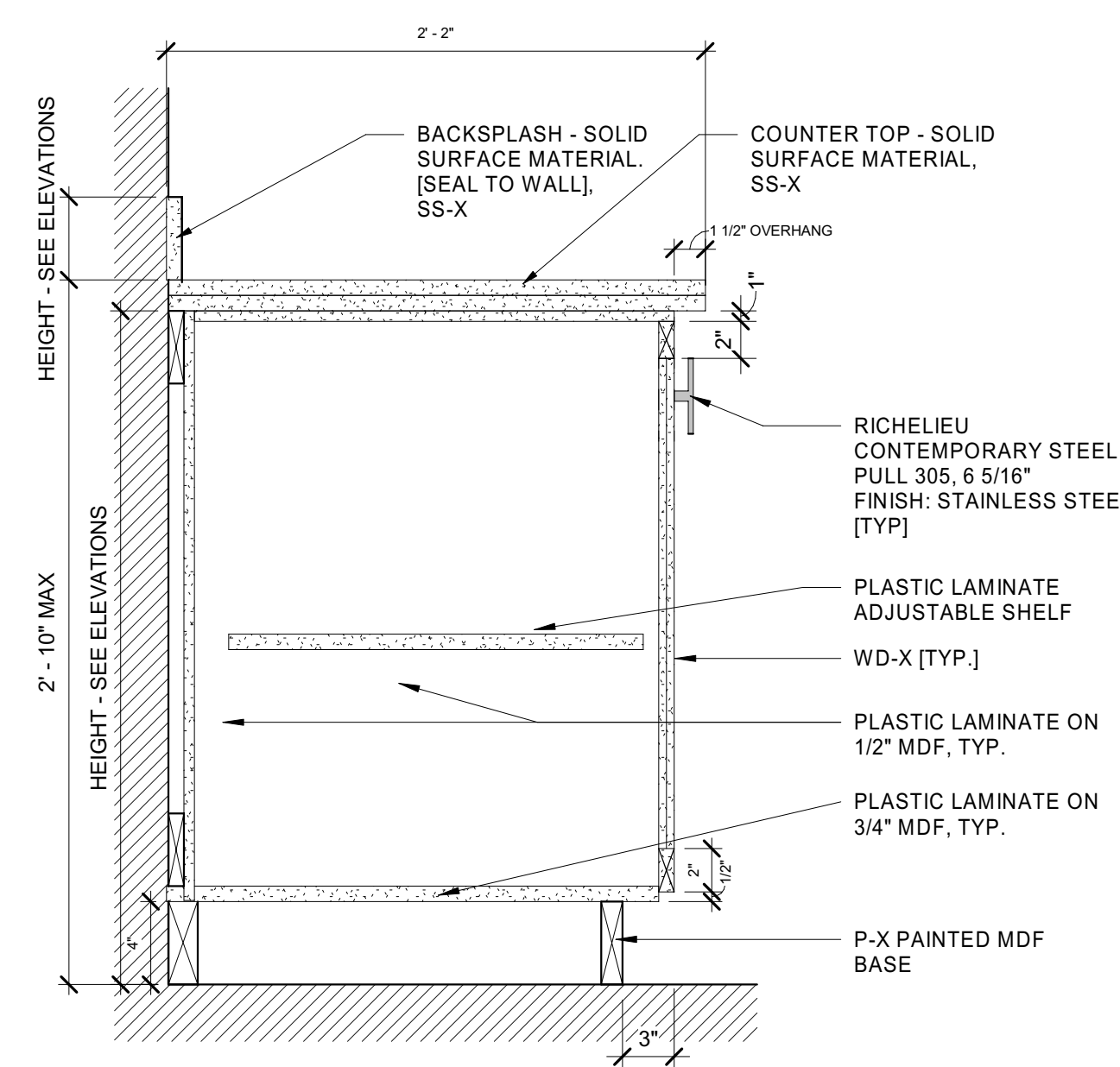
4 Detail
TYP. BASE CABINET, DOOR, FRONT
A5.31 1 1/2" = 1'-0"



3 Detail TYP
BASE CABINET-4 DRAWERS
A5.31 1 1/2" = 1'-0"



2 Detail TYP
BASE CABINET, SINK TYP.
A5.31 1 1/2" = 1'-0"



1 Detail TYP
BASE CABINET, DOOR TYP.
A5.31 1 1/2" = 1'-0"