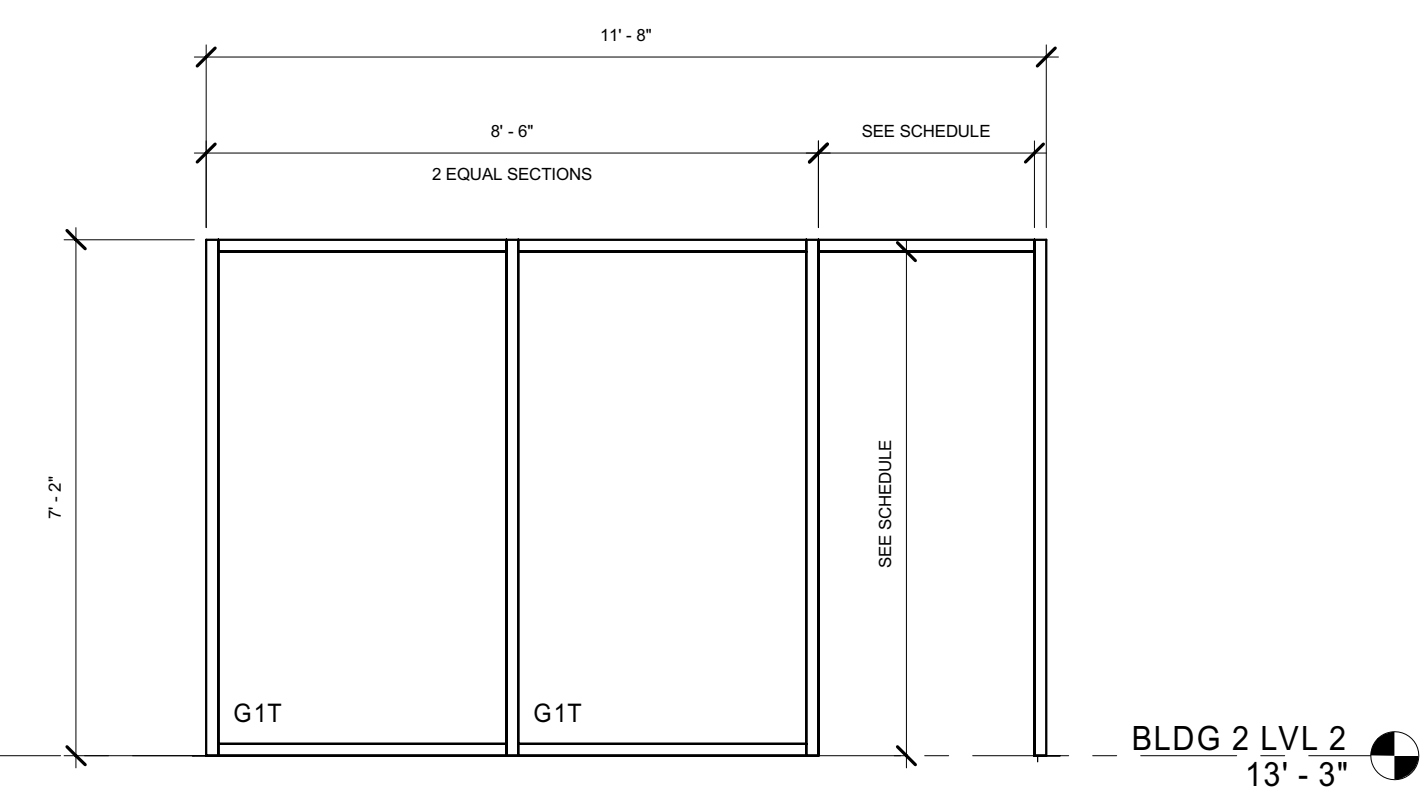
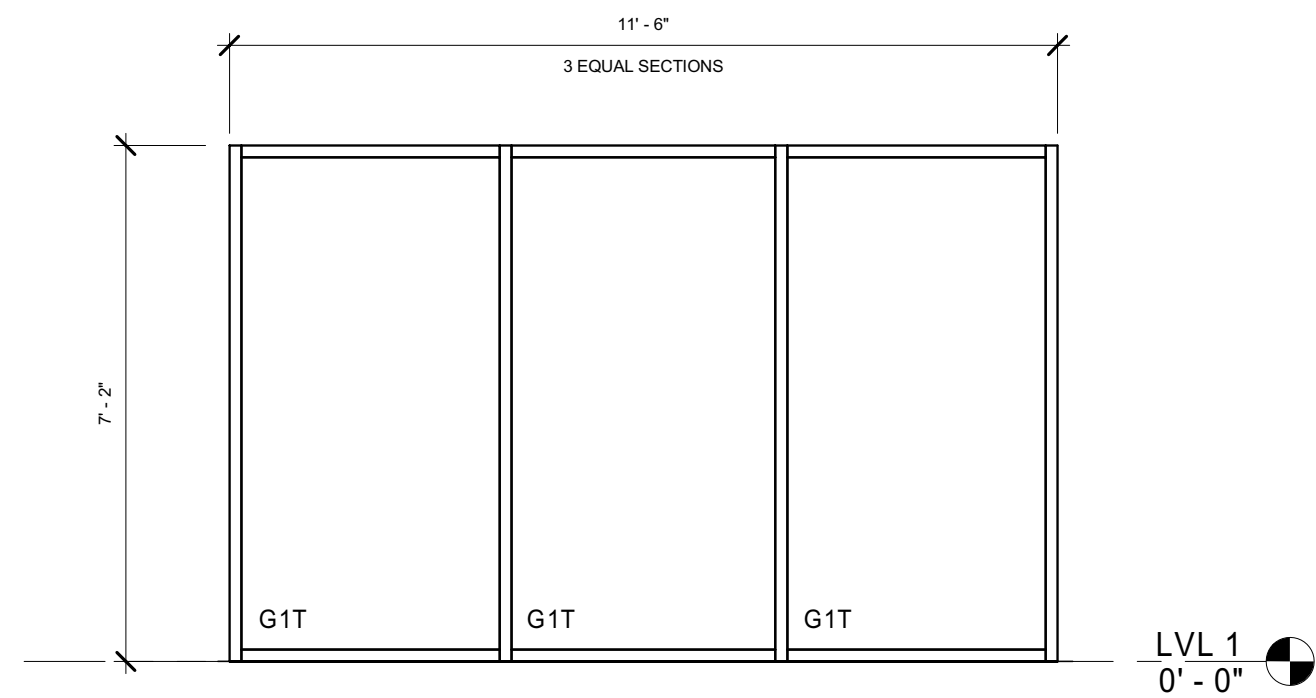


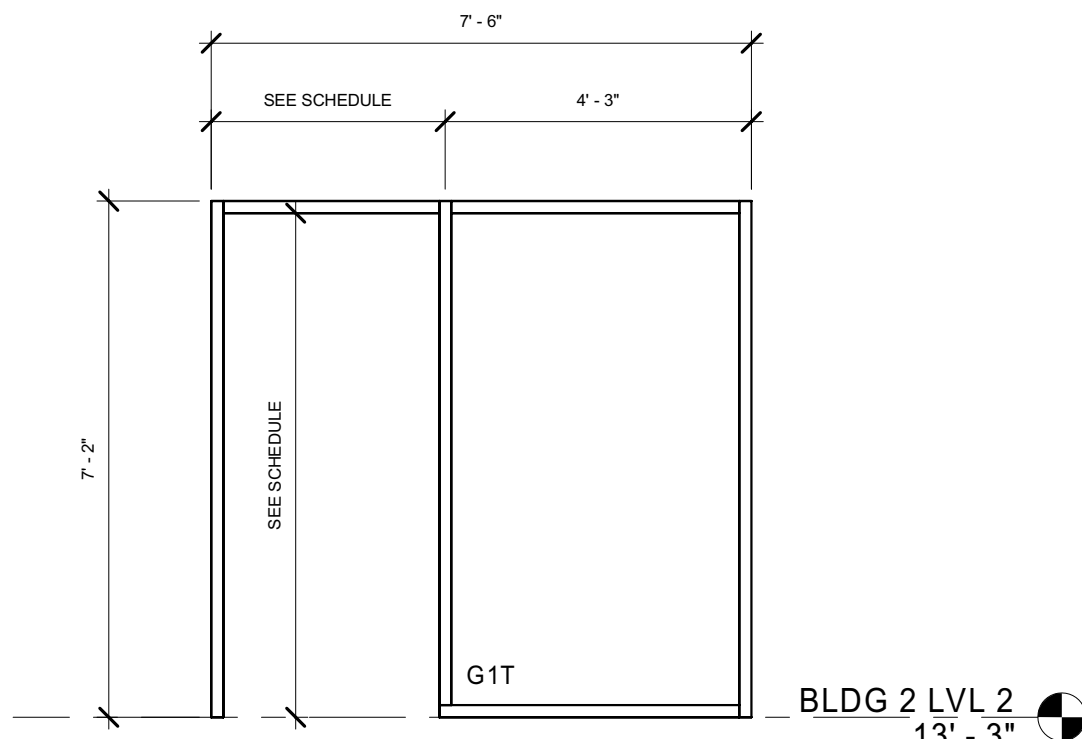
16 Storefront Elevation
Storefront Elevation 16
A8.11 3/8" = 1'-0"



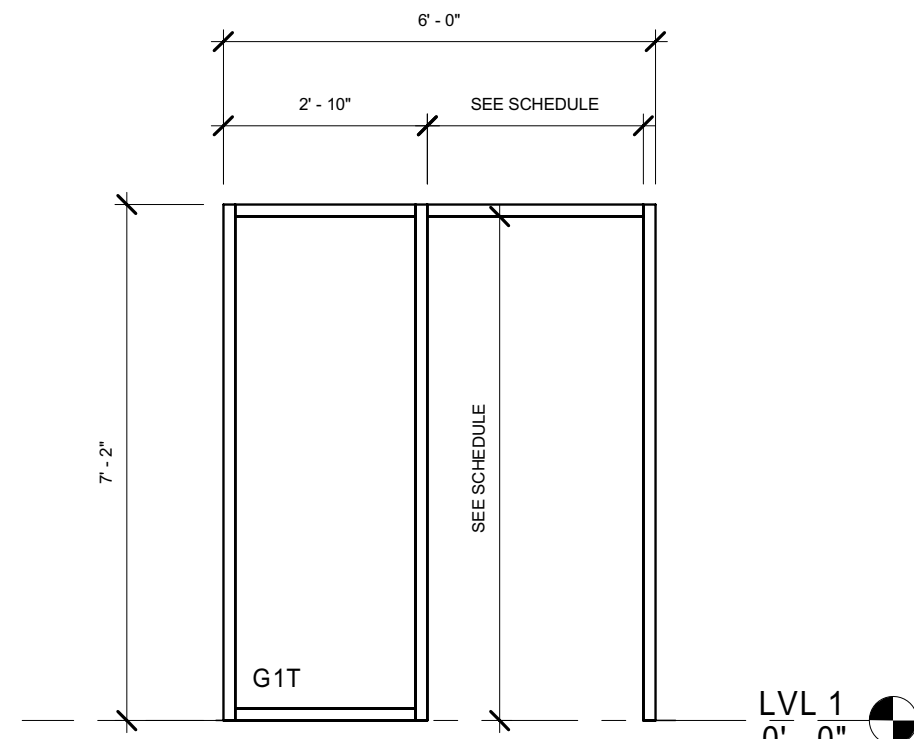
15 Storefront Elevation
Storefront Elevation 15
A8.11 3/8" = 1'-0"



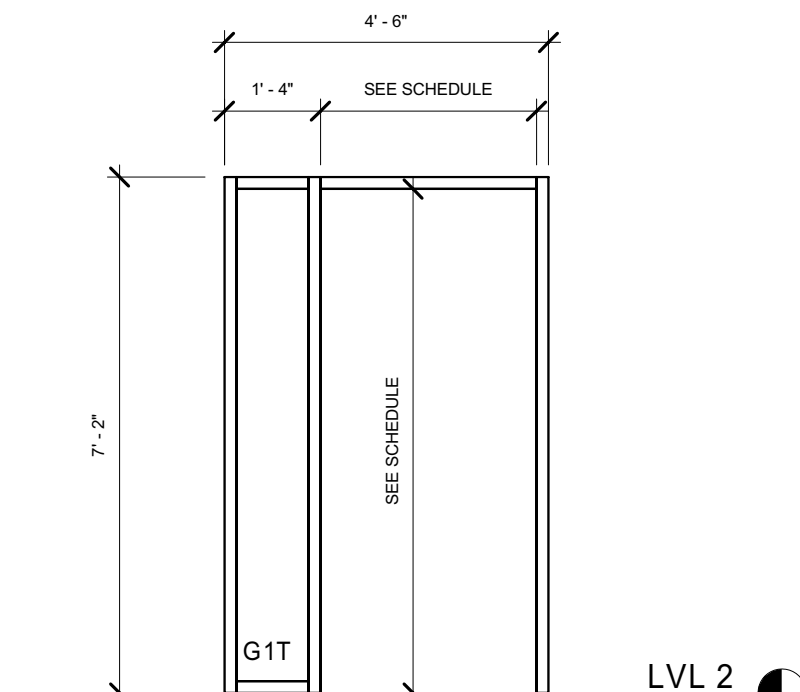
14 Storefront Elevation
Storefront Elevation 14
A8.11 3/8" = 1'-0"



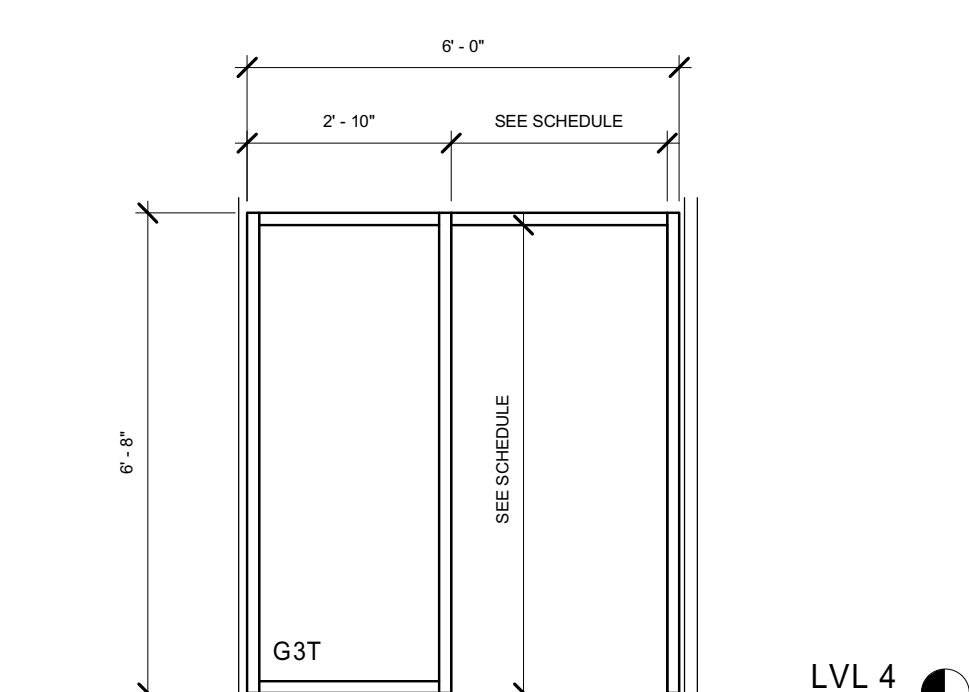
13 Interior Elevation
Storefront Elevation 13
A8.11 3/8" = 1'-0"



12 Storefront Elevation
Storefront Elevation 12
A8.11 3/8" = 1'-0"



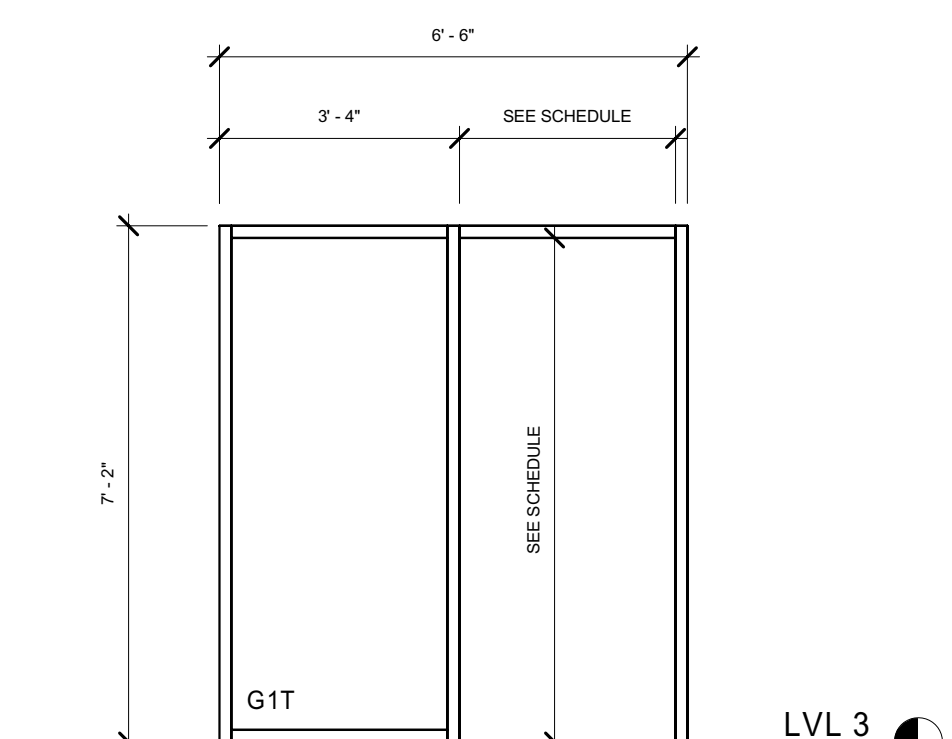
11 Storefront Elevation
Storefront Elevation 11
A8.11 3/8" = 1'-0"



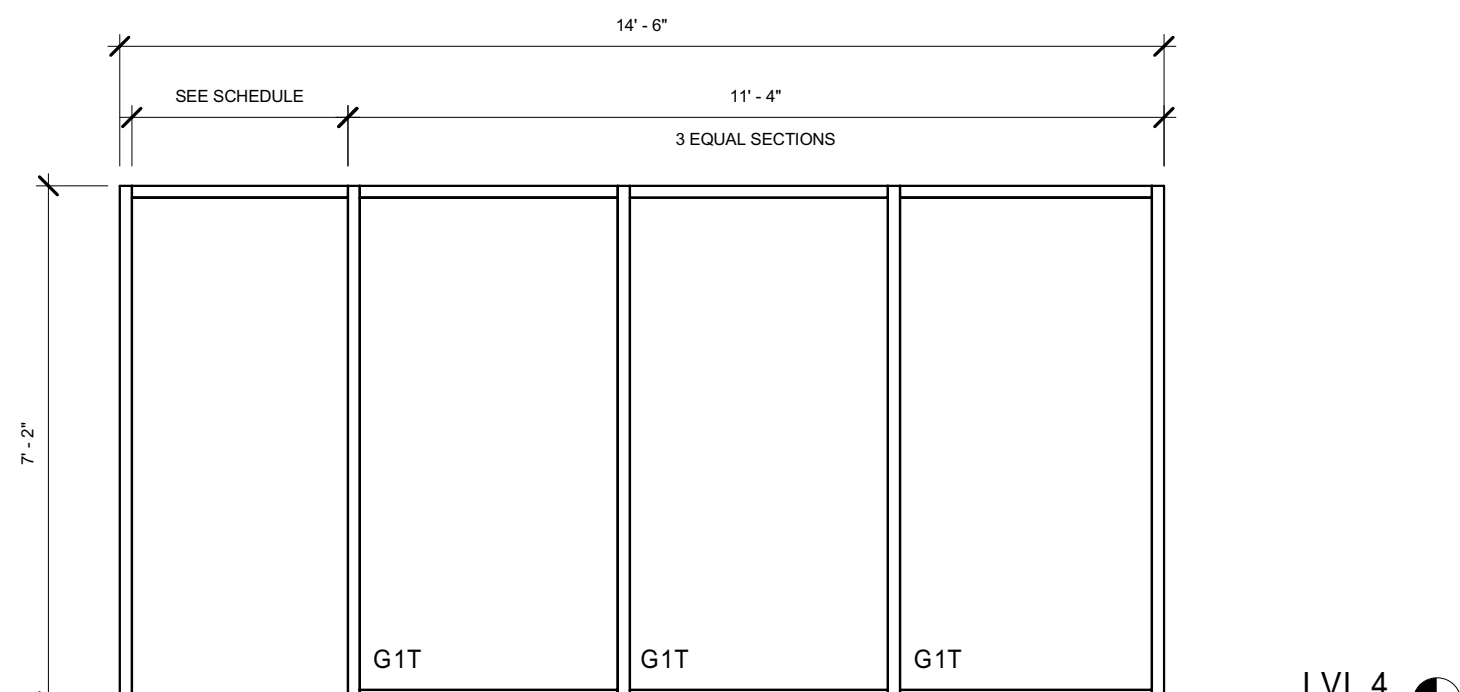
10 Storefront Elevation
Storefront Elevation 10
A8.11 3/8" = 1'-0"

- GENERAL STOREFRONT NOTES**
1. WINDOW SYSTEMS ARE TO BE THERMALLY BROKEN.
 2. ARCHITECT TO APPROVE GLASS SAMPLES PRIOR TO FABRICATION.
 3. ALUMINUM STOREFRONT; BASIS OF DESIGN: KAWNEER 451T STOREFRONT SYSTEM. 1" INSULATED GLAZING UNIT, COLOR BLACK, UNLESS NOTED OTHERWISE. ARCHITECT TO APPROVE FINISH SAMPLES PRIOR TO FABRICATION.
 4. MULLION FINISH TO BE SELECTED FROM MANUFACTURER'S FULL RANGE. ARCHITECT TO APPROVE FINISH SAMPLES PRIOR TO FABRICATION.
 5. WINDOW CONTRACTOR IS TO FIELD VERIFY EACH AS-BUILT R.O. DIMENSION PRIOR TO FABRICATION.
 6. WINDOW CAULK JOINT AT ROUGH OPENING NOT TO EXCEED 1/2".

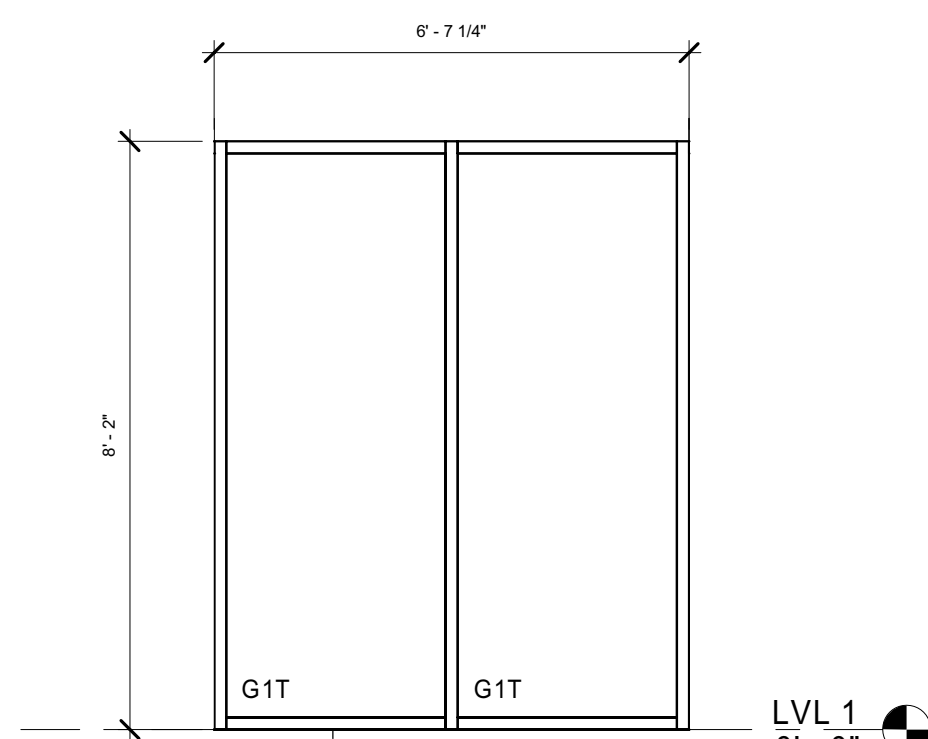
GLASS SCHEDULE	
G1	1/4" CLEAR GLASS
G2	1/4" CLEAR GLASS, LAMINATED
G3	1" INSULATED CLEAR GLASS WITH LOW-E
G4	1" INSULATED COLOR GLASS WITH LOW-E
S1	1" INSULATED SPANDREL GLASS
S2	1" INSULATED COLOR SPANDREL GLASS
M1	FLUSH METAL FILL PANEL, TO MATCH MULLION FINISH.
(T)	THE SUFFIX (T) DENOTES THAT THE INDICATED DAYLIGHT OPENING IS TO BE MANUFACTURED WITH TEMPERED GLAZING.



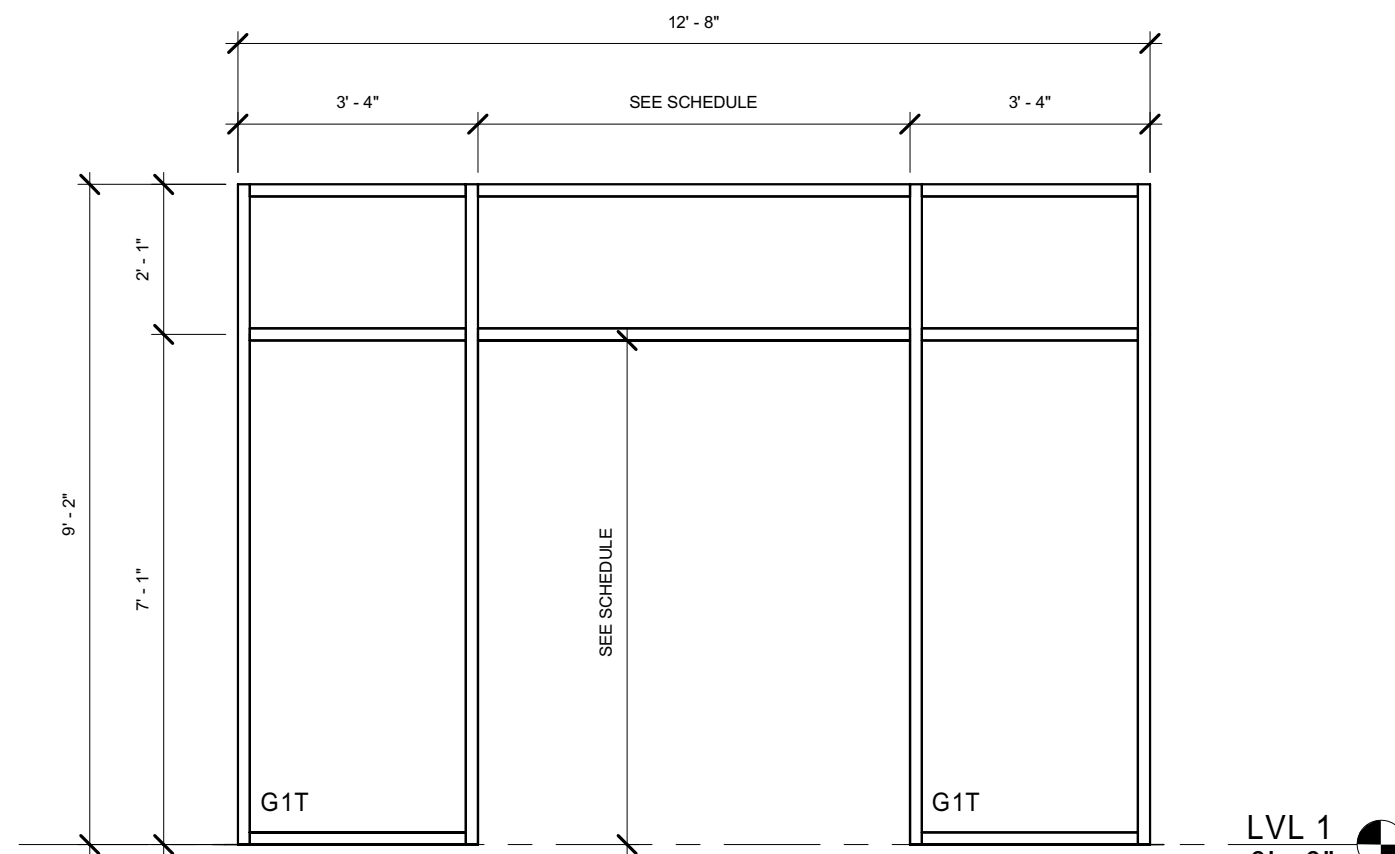
9 Interior Elevation
Storefront Elevation 9
A8.11 3/8" = 1'-0"



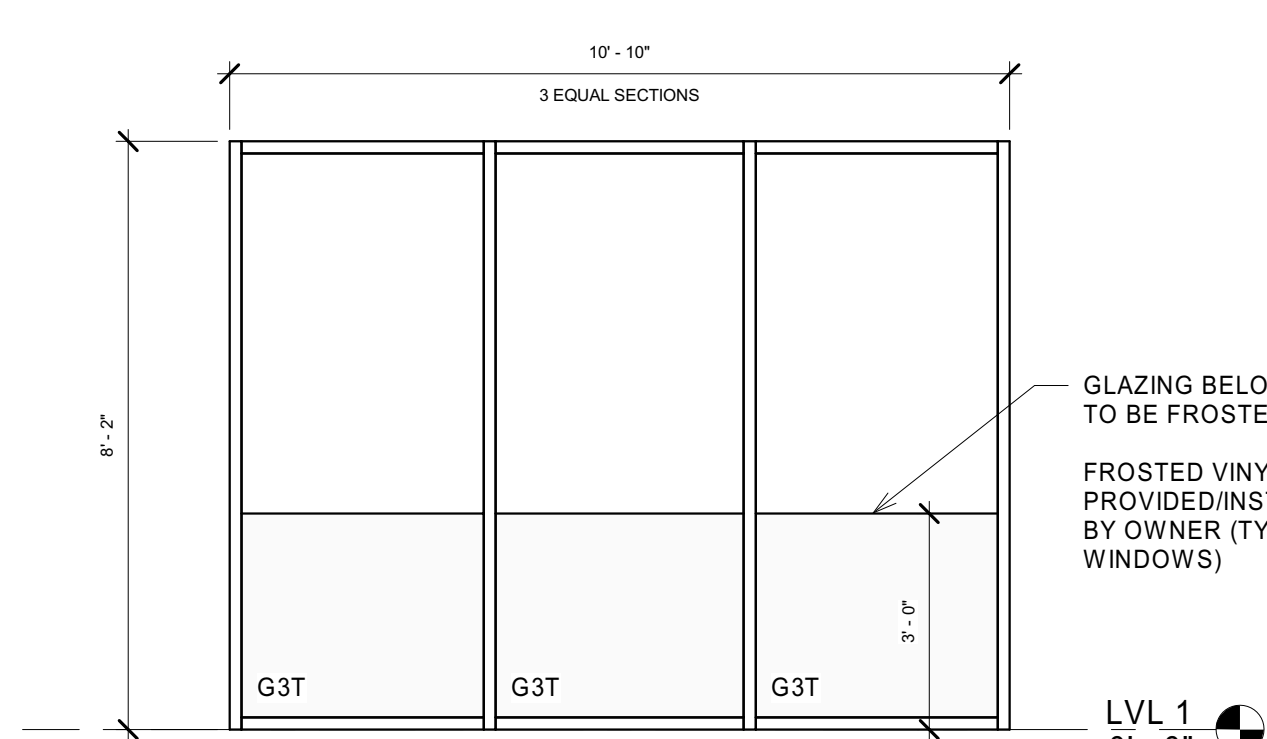
8 Storefront Elevation
Storefront Elevation 8
A8.11 3/8" = 1'-0"



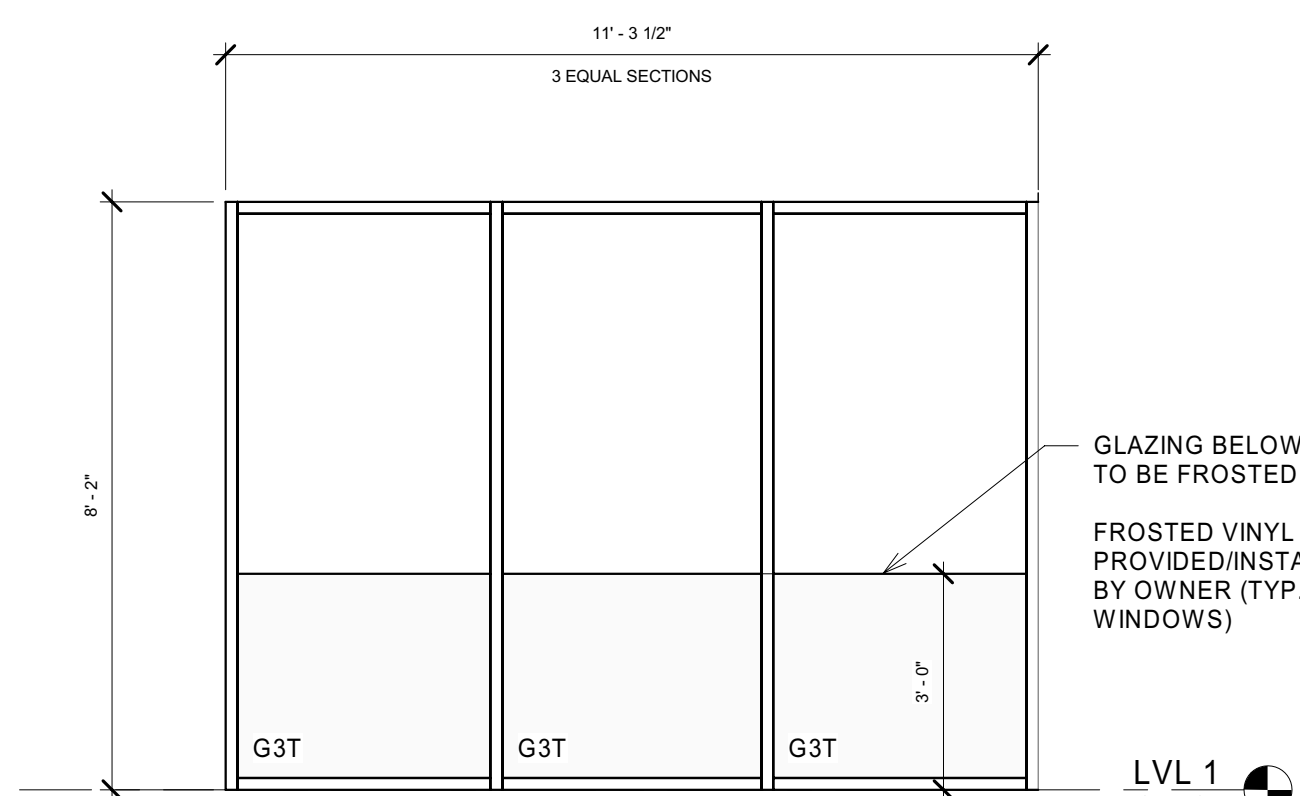
7 Storefront Elevation
Storefront Elevation 7
A8.11 3/8" = 1'-0"



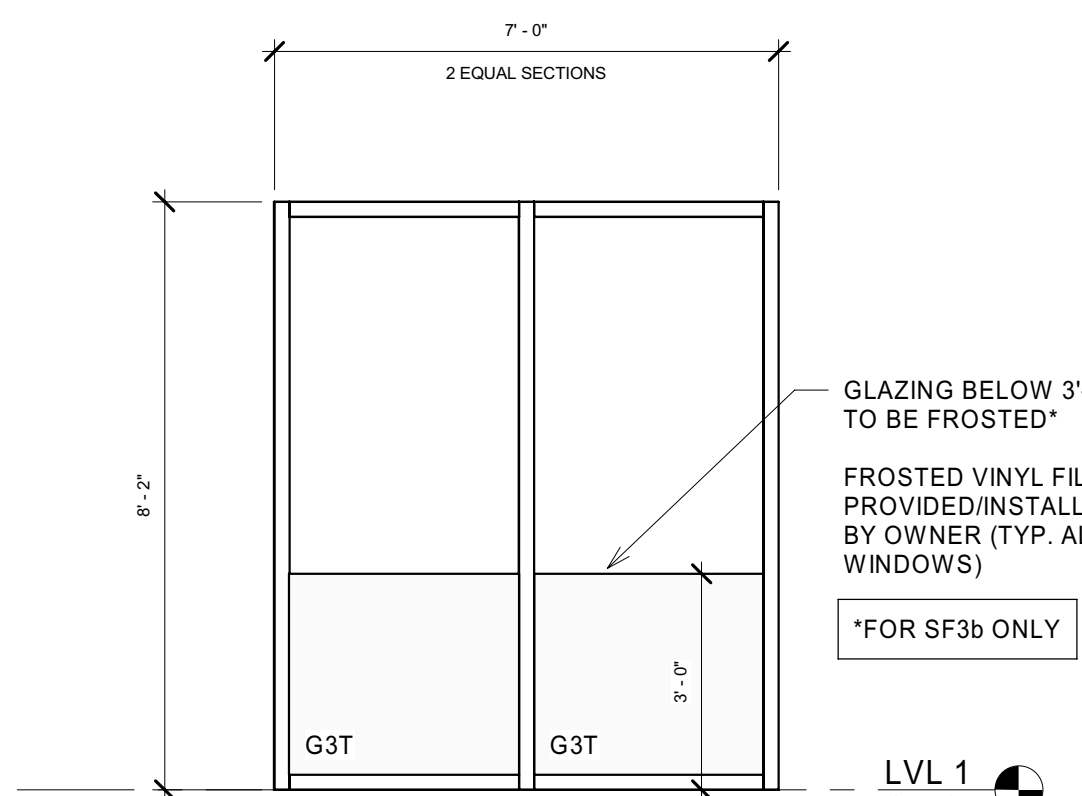
6 Storefront Elevation
Storefront Elevation 6
A8.11 3/8" = 1'-0"



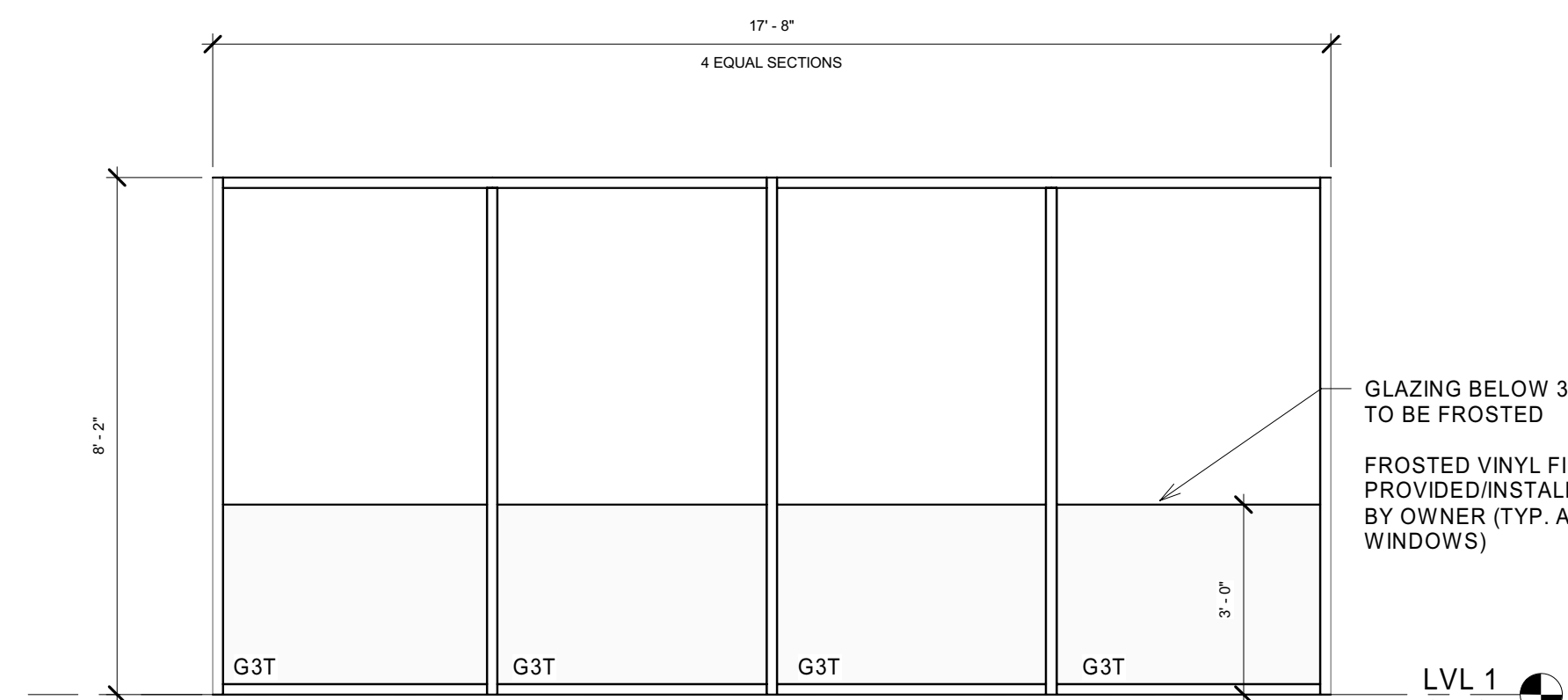
5 Storefront Elevation
Storefront Elevation 5
A8.11 3/8" = 1'-0"



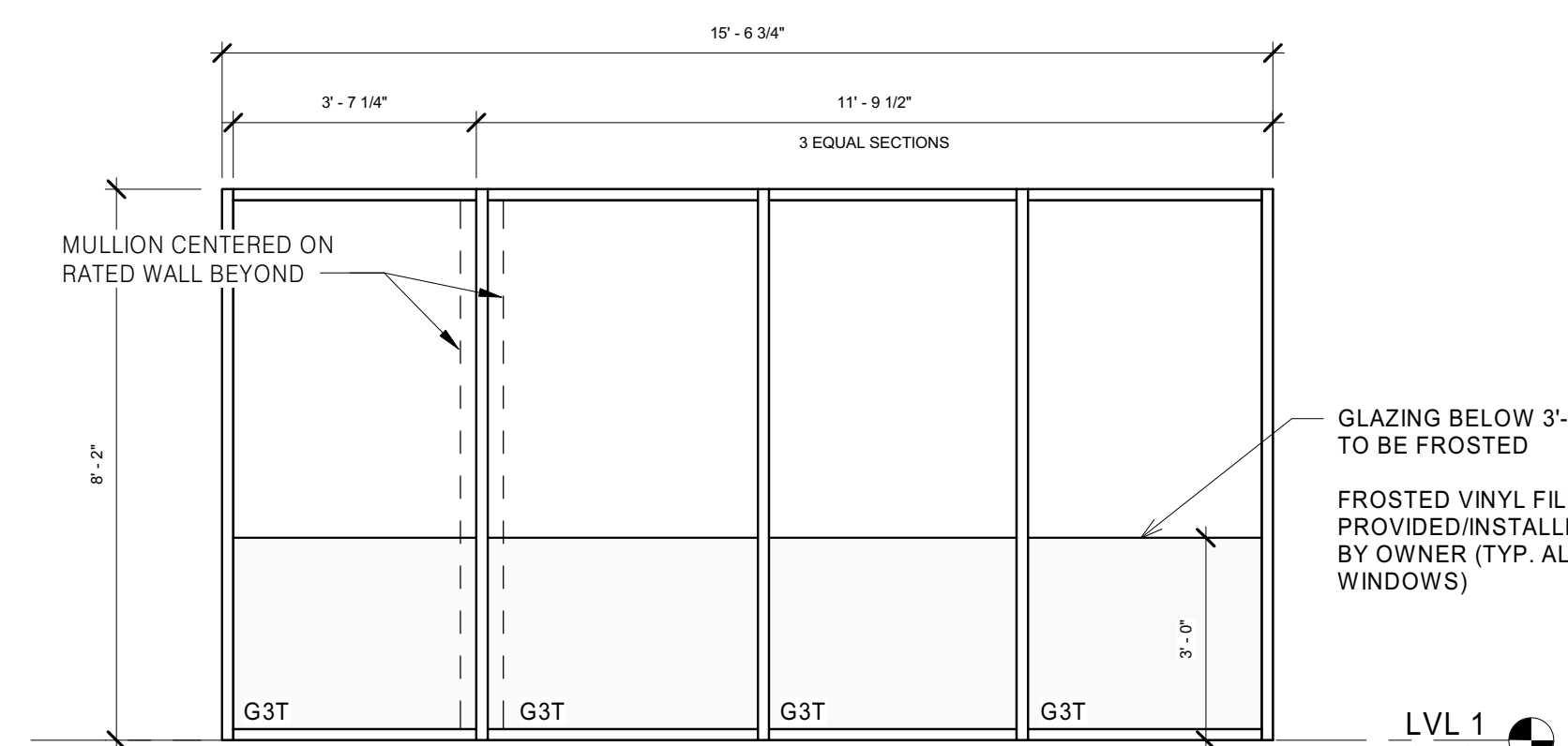
4 Storefront Elevation
Storefront Elevation 4
A8.11 3/8" = 1'-0"



3 Storefront Elevation
Storefront Elevation 3
A8.11 3/8" = 1'-0"



2 Storefront Elevation
Storefront Elevation 2
A8.11 3/8" = 1'-0"



1 Storefront Elevation
Storefront Elevation 1
A8.11 3/8" = 1'-0"



CERTIFICATION

Construction Documents

Cohatch - Leader Building

132 W Elder St, Cincinnati,
Ohio, 45202

Project No.: 21023-A
Drawn By: Author
Checked By: Checker
Scale: See Drawing
Issue Date: November 18, 2022

REVISION SCHEDULE		
Rev. #	Revision Description	Issue Date
1	ADD #1	04-13-2022
8	REV #1	11-18-2022
10	ADD #8	01-20-2023

Storefront Elevations

A8.11