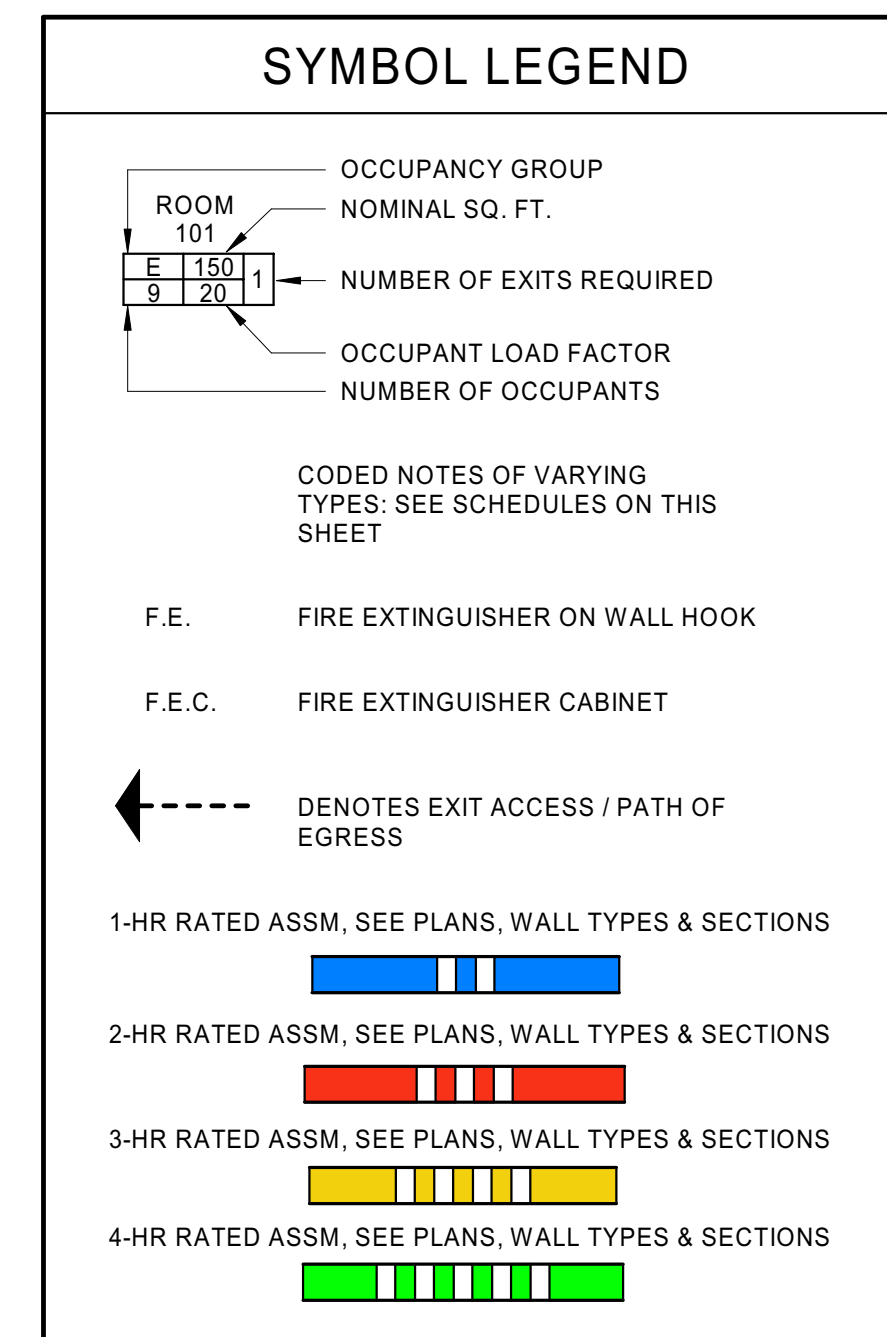


REVISION SCHEDULE		
Rev. #	Revision Description	Issue Date
2	ADD #2	05-06-2022
5	ADD #4	06-20-2022
6	ADD #5	07-13-2022
7	ADD #6	08-26-2022
8	REV #1	11-18-2022
10	ADD #8	01-20-2023
11	ADD #9	02-24-2023

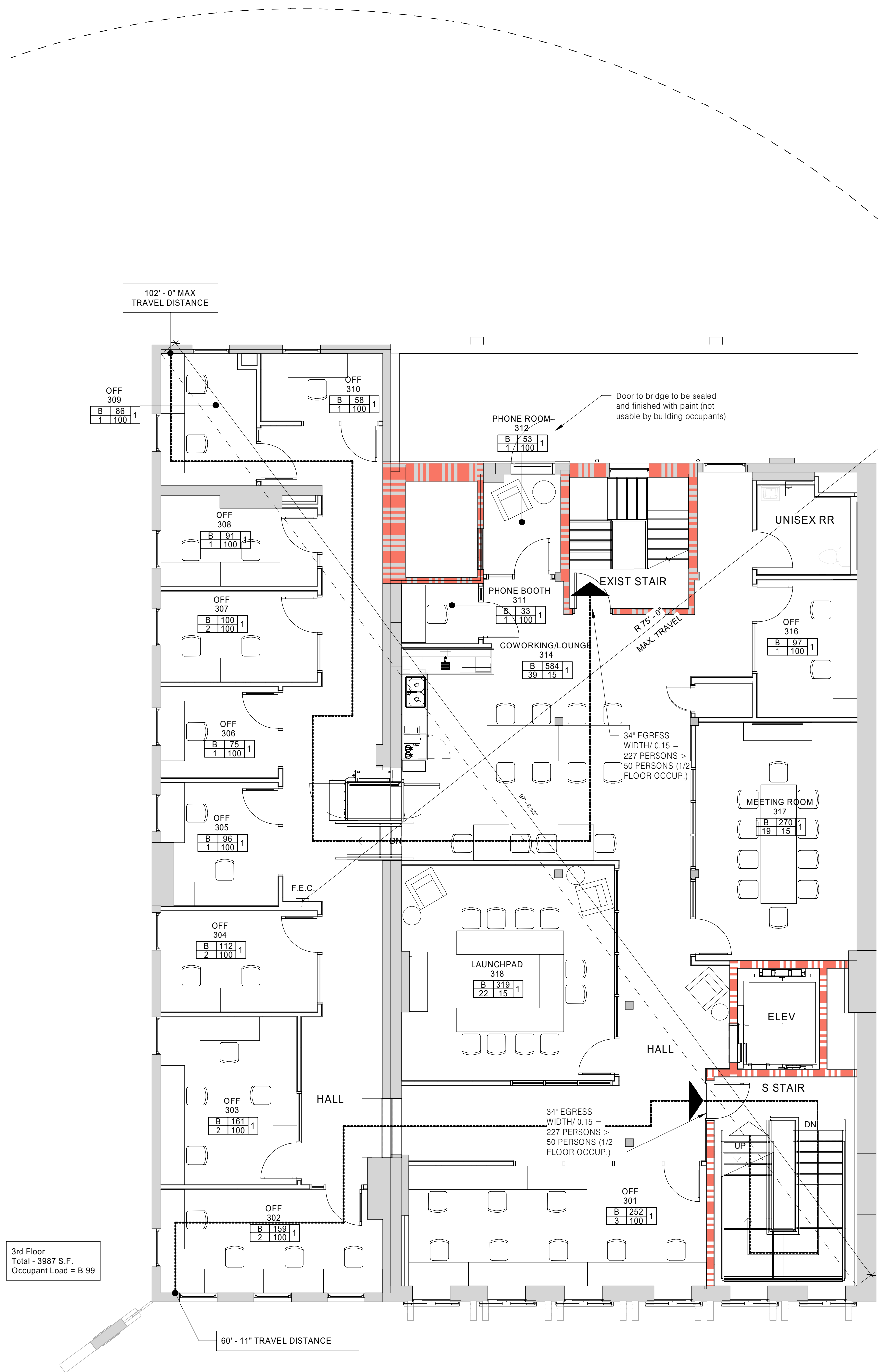


GENERAL LIFE SAFETY NOTES

1. THE MOST RESTRICTIVE FIRE RATING FOR WALLS AND OTHER COMPONENTS WHICH ARE SUBJECT TO MULTIPLE VARYING FIRE RATING REQUIREMENTS SHALL BE THE FIRE RATING FOR THAT ASSEMBLY.
2. FIRE RATED ASSEMBLIES IDENTIFIED WITH A UL-ASSEMBLY NUMBER SHALL COMPLY WITH THE FULL CONSTRUCTION AND INSTALLATION REQUIREMENTS DEFINED BY THAT DESIGNATED UL-ASSEMBLY.
3. SEE BUILDING CODE SUMMARY ON SHEET 0.01.
4. DIMENSIONS SHOWN ON THE LIFE SAFETY PLANS ARE FOR MEANS-OF-EGRESS / LIFE-SAFETY REFERENCE ONLY AND ARE NOT FOR CONSTRUCTION. CONTRACTOR IS TO UTILIZE PRECISE DIMENSIONS PROVIDED ON A1-SERIES DRAWINGS FOR FLOOR PLAN CONSTRUCTION DIMENSIONS.
5. MAXIMUM ALLOWABLE TRAVEL DISTANCE FOR (A) OCCUPANCIES IS 250' PER FBC SECTION 1017.
6. MAXIMUM ALLOWABLE TRAVEL DISTANCE FOR (B) OCCUPANCIES IS 300' PER FBC SECTION 1017.
7. DIMENSIONS LABELED AS "TRAVEL" INDICATE THE EXIT ACCESS DISTANCE (TRAVEL DISTANCE) FROM THE MIDPOINT BETWEEN TWO EXITS TO EITHER OF THE ASSOCIATED EXITS.

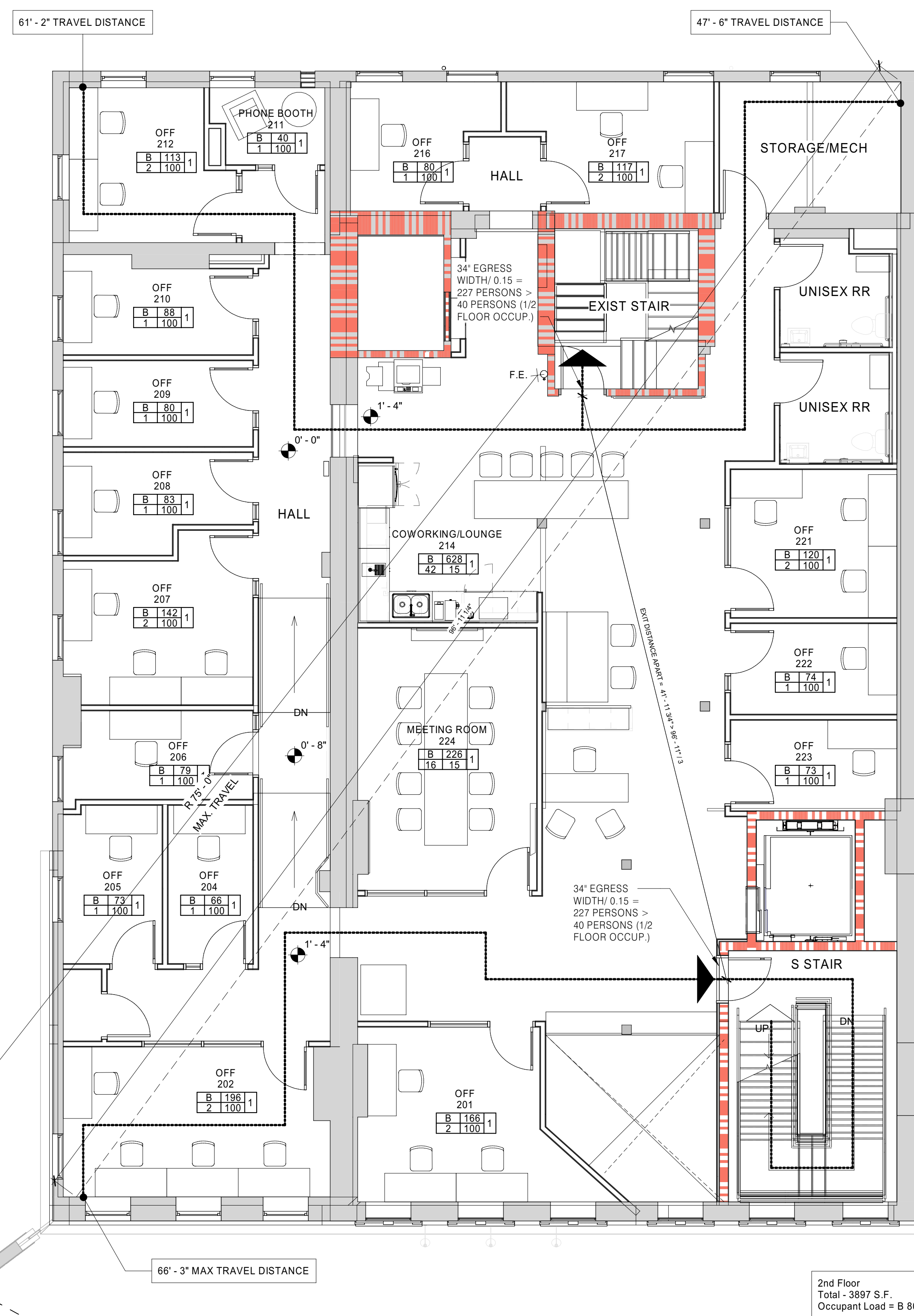
GEN. FIRE EXTINGUISHER NOTES

1. PROVIDE PORTABLE FIRE EXTINGUISHERS (AND CABINETS) PER NFPA 10 AND AS REQUIRED BY THE GOVERNING BUILDING AND/OR FIRE AUTHORITY.
2. RECESSED AND PARTIALLY RECESSED FIRE EXTINGUISHER CABINETS MOUNTED WITHIN RATED WALLS ARE TO HAVE A RATING THAT MATCHES THE WALL.
3. SEE SPECIFICATIONS



2 Floor Plan
3rd Floor, Life Safety Plan

A0.02-L1 3/16" = 1'-0"



1 Floor Plan
2nd Floor, Life Safety Plan

A0.02-L1 3/16" = 1'-0"