

SYMBOL LEGEND

ROOM 101
E 1150 1
9 1 20 1
OCCUPANCY GROUP
NOMINAL SQ. FT.
NUMBER OF EXITS REQUIRED
OCCUPANT LOAD FACTOR
NUMBER OF OCCUPANTS

CODED NOTES OF VARYING TYPES: SEE SCHEDULES ON THIS SHEET

F.E. FIRE EXTINGUISHER ON WALL HOOK
F.E.C. FIRE EXTINGUISHER CABINET

← DENOTES EXIT ACCESS / PATH OF EGRESS

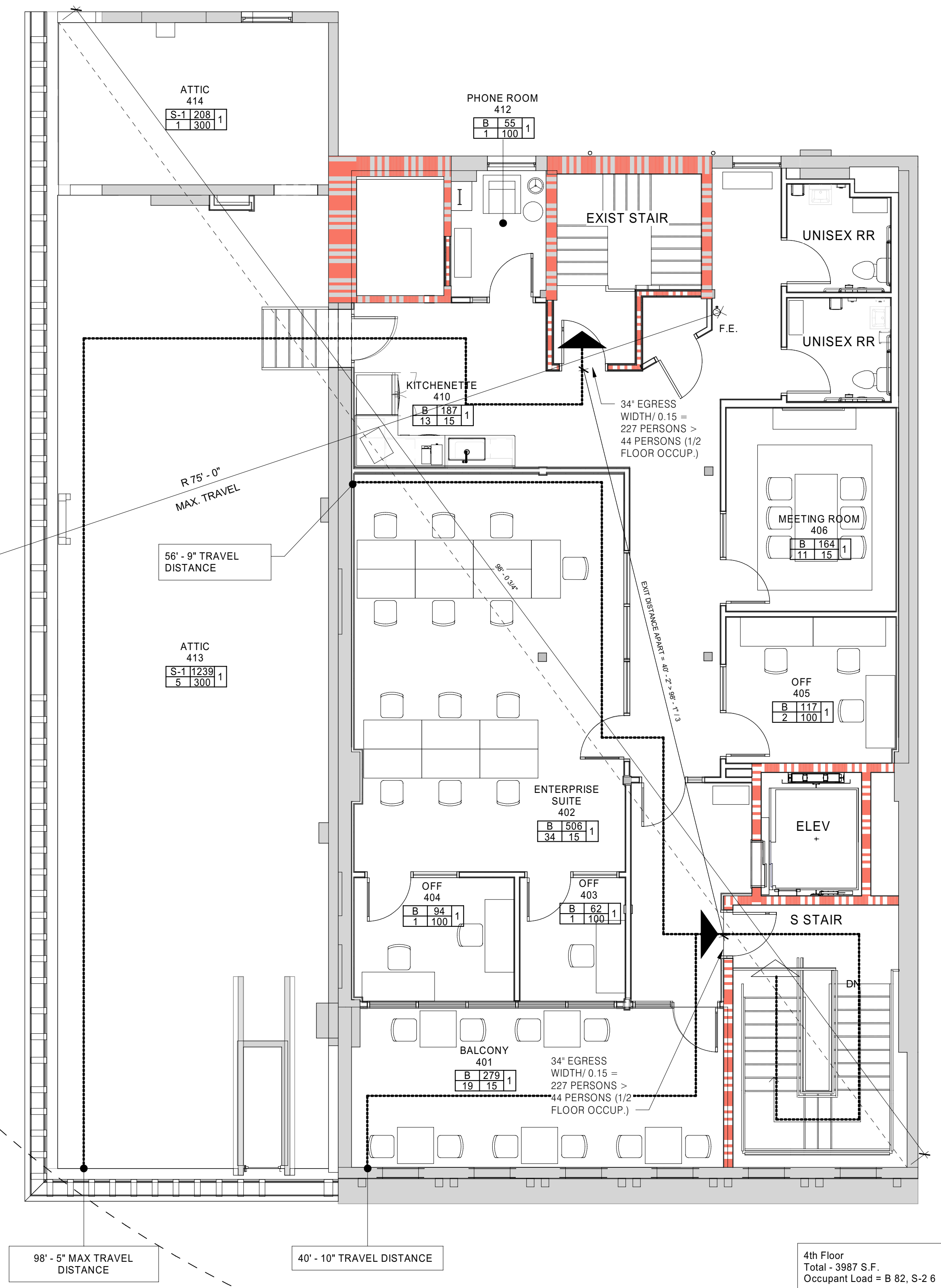
1-HR RATED ASSM, SEE PLANS, WALL TYPES & SECTIONS
2-HR RATED ASSM, SEE PLANS, WALL TYPES & SECTIONS
3-HR RATED ASSM, SEE PLANS, WALL TYPES & SECTIONS
4-HR RATED ASSM, SEE PLANS, WALL TYPES & SECTIONS

GENERAL LIFE SAFETY NOTES

1. THE MOST RESTRICTIVE FIRE RATING FOR WALLS AND OTHER COMPONENTS WHICH ARE SUBJECT TO MULTIPLE VARYING FIRE RATING REQUIREMENTS SHALL BE THE FIRE RATING FOR THAT ASSEMBLY.
2. FIRE RATED ASSEMBLIES IDENTIFIED WITH A UL-ASSEMBLY NUMBER SHALL COMPLY WITH THE FULL CONSTRUCTION AND INSTALLATION REQUIREMENTS DEFINED BY THAT DESIGNATED UL-ASSEMBLY.
3. SEE BUILDING CODE SUMMARY ON SHEET 0.01.
4. DIMENSIONS SHOWN ON THE LIFE SAFETY PLANS ARE FOR MEANS-OF-EGRESS / LIFE-SAFETY REFERENCE ONLY AND ARE NOT FOR CONSTRUCTION. CONTRACTOR IS TO UTILIZE PRECISE DIMENSIONS PROVIDED ON A1-SERIES DRAWINGS FOR FLOOR PLAN CONSTRUCTION DIMENSIONS.
5. MAXIMUM ALLOWABLE TRAVEL DISTANCE FOR (A) OCCUPANCIES IS 250' PER FBC SECTION 1017.
6. MAXIMUM ALLOWABLE TRAVEL DISTANCE FOR (B) OCCUPANCIES IS 300' PER FBC SECTION 1017.
7. DIMENSIONS LABELED AS "TRAVEL" INDICATE THE EXIT ACCESS DISTANCE (TRAVEL DISTANCE) FROM THE MIDPOINT BETWEEN TWO EXITS TO EITHER OF THE ASSOCIATED EXITS.

GEN. FIRE EXTINGUISHER NOTES

1. PROVIDE PORTABLE FIRE EXTINGUISHERS (AND CABINETS) PER NFPA 10 AND AS REQUIRED BY THE GOVERNING BUILDING AND/OR FIRE AUTHORITY.
2. RECESSED AND PARTIALLY RECESSED FIRE EXTINGUISHER CABINETS MOUNTED WITHIN RATED WALLS ARE TO HAVE A RATING THAT MATCHES THE WALL.
3. SEE SPECIFICATIONS



1 Floor Plan
4th Floor, Life Safety Plan
A0.03-L1 3/16\"/>



626 North Illinois Street
Indianapolis, Indiana 46204
Phone: (317) 635-5030
Website: www.browningday.com

CRDV Findlay Market LLC
Owner

1733 W Lane Avenue
Columbus, Ohio 43221
(513) 559-0048
https://www.cohatch.com

The Model Group
Contractor

1826 Race Street
Cincinnati, Ohio 45202
(513) 559-0048
https://modelgroup.net

The Kleingers Group
Civil Engineer

6219 Centre Park Drive
West Chester Township, Ohio 45069
Phone: (513) 779-7851
Website: https://www.kleingers.com

Lawson Elser Engr
Structural Engineer

650 E. Carmel Dr., Suite 150
Carmel, IN 46032
Phone: (317) 574-9409x2
Website: www.lawsonelser.com

Gooderum & Assoc.
MEP Engineer

874 Cheltenham Way
Avon, IN 46123
Phone: (317) 506-8151

Brightstone Creative
Tenant Designer

25 North Street
Dublin, Ohio 43017
Phone: (614) 578-0249

COhatch
Tenant

1733 W Lane Avenue
Columbus, Ohio 43221
(513) 559-0048
https://www.cohatch.com



CERTIFICATION

Construction Documents

COhatch - Leader Building

132 W Elder St, Cincinnati,
Ohio, 45202

Project No.: 21023 A
Drawn By: Author
Checked By: Checker
Scale: See Drawing
Issue Date: November 18, 2022

REVISION SCHEDULE		
Rev. #	Revision Description	Issue Date
2	ADD #2	05-06-2022
5	ADD #4	06-20-2022
6	ADD #5	07-13-2022
7	ADD #6	08-26-2022
8	REV #1	11-18-2022
10	ADD #8	01-20-2023
11	ADD #9	02-24-2023

Life Safety Plans

A0.03-L1