



CERTIFICATION

Construction Documents

COhatch - Leader Building

132 W Elder St, Cincinnati,
Ohio, 45202

Project No.: 21023-A
Drawn By: Author
Checked By: Checker
Scale: See Drawing
Issue Date: November 18, 2022

REVISION SCHEDULE		
Rev. #	Revision Description	Issue Date
1	ADD #1	04-13-2022
2	ADD #2	05-06-2022
8	REV #1	11-18-2022

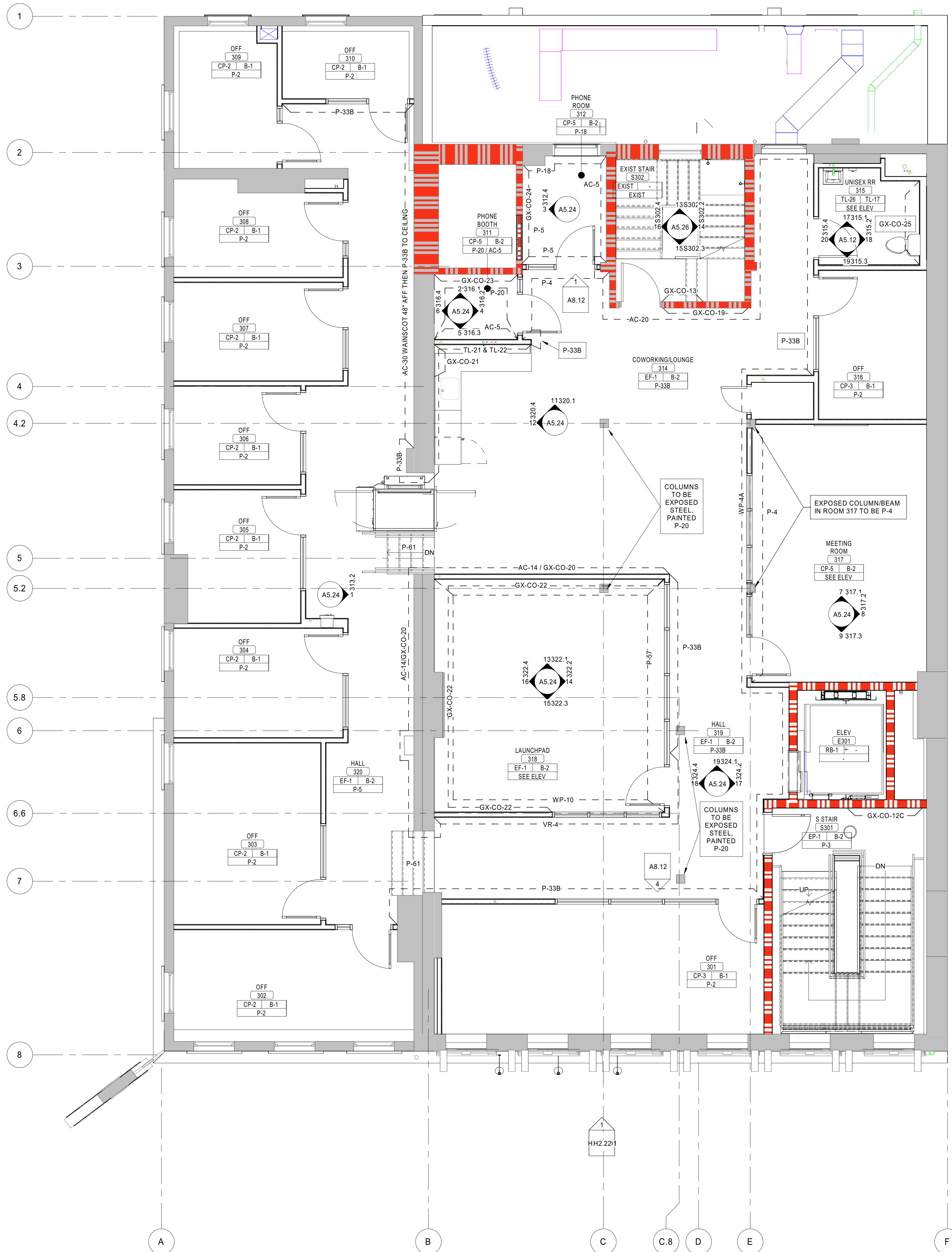
GENERAL FINISH NOTES

- REFER TO FINISH PLAN, ROOM FINISH SCHEDULE, INTERIOR ELEVATIONS, AND REFLECTED CEILING PLANS FOR FINISH INFORMATION.
- MATERIAL INFORMATION IS GIVEN WHEREVER POSSIBLE ON THE INTERIOR SHEETS. IT SHALL BE THE RESPONSIBILITY OF THE CONTRACTOR TO BRING ANY DISCREPANCIES TO THE ATTENTION OF THE ARCHITECT SO THAT THE CORRECT MATERIAL IS INSTALLED.
- REFER TO THE SPECIFICATIONS FOR EACH MATERIAL SELECTION.
- PLEASE REFER TO SPECIFICATIONS PROVIDED BY BRIGHTSTONE FOR TENANT INFORMATION, MATERIALS, FURNITURE AND MILLWORK.
- ALL MATERIALS ARE TO BE INSTALLED USING THE MANUFACTURER'S RECOMMENDED ADHESIVES.
- GYP. BD. WALLS AND SOFFITS TO RECEIVE A LEVEL FOUR (4) FINISH UNLESS NOTED OTHERWISE.
- OFFICES AND ROOM WALLS ARE TO BE PAINTED P-2 UNLESS NOTED OTHERWISE.
- COMMON SPACES AND CORRIDORS ARE TO BE PAINTED P-3 UNLESS NOTED OTHERWISE.
- GYP. BD. BULKHEADS AND CEILINGS ARE TO BE PAINTED P-33A UNLESS NOTED OTHERWISE.
- BULKHEADS, SOFFITS, AND FUR-DOWNS ARE TO BE FINISHED WITH THE SAME MATERIAL AND/OR COLOR ON ALL FACES AS SPECIFIED UNLESS NOTED OTHERWISE.
- THERE SHALL NOT BE PAINT CONDITIONS THAT OCCUR CAUSING FINISH OR COLOR TO CHANGE ON AN OUTSIDE CORNER UNLESS NOTED OTHERWISE. IF THIS CONDITION OCCURS BRING THIS TO THE ARCHITECT'S ATTENTION IMMEDIATELY.
- FIRE RESISTANT RATED INTUMESCENT PAINT FINISH EXPOSED WITHIN A ROOM IS TO HAVE A SMOOTH FINISH AND RECEIVE A FINAL PAINT COLOR SELECTED BY THE ARCHITECT.
- EXPOSED CMU, WHICH DOES NOT HAVE A SPECIAL FINISH, INTEGRAL COLOR OR DECORATIVE FACE, IS TO BE PAINTED UNLESS NOTED OTHERWISE.
- WALL GRILLES, CEILING DIFFUSERS, AND FIRE EXTINGUISHER CABINETS ARE TO BE FINISHED IN THE SAME MATERIAL AS THE ADJACENT WALL MATERIAL.
- METAL TRIM PIECE TO OCCUR AT ALL TILED WALL OUTSIDE CORNERS ABOVE FORMED OUTSIDE CORNER TILE TRIM UNITS.
- PROVIDE FRP AT SINKS IN JANITOR CLOSETS TO 6" ABOVE FAUCETS AND ON ADJACENT WALLS.
- TRANSITIONS, REDUCER STRIPS, AND THRESHOLDS TO BE LOCATED AT CENTERLINE OF DOOR WHEN IN CLOSED POSITION.
- ALIGN FLOORING TRANSITIONS WITH FINISH BASE EXCEPT AT DOORS UNLESS NOTED OTHERWISE.
- FLOORING MATERIAL SHALL BE CENTERED UNDER THE DOOR IN THE CLOSED POSITION. TRANSITIONS, IF NEEDED, ARE ALSO TO BE CENTERED UNDER THE DOOR IN THE CLOSED POSITION.
- CARPET SEAMS TO BE LOCATED AT CENTERLINE OF DOOR IN CLOSED POSITION.
- CARPET TILE TO BE QUARTER TURNED UNLESS NOTED OTHERWISE.
- FLOORING TO BE INSTALLED PERPENDICULAR TO ROOM WALLS UNLESS NOTED OTHERWISE.
- RUBBER TRANSITIONS AND METAL TRANSITIONS TO OCCUR BETWEEN DIFFERENT MATERIALS AND ARE TO BE SELECTED BY ARCHITECT FROM MANUFACTURER'S FULL RANGE OF PRODUCTS.
- PROVIDE CRACK ISOLATION MEMBRANE AT ALL CERAMIC FLOORING. FLOORING CONTRACTOR TO COORDINATE WITH SPECIFICATIONS.
- WALL AND FLOOR GROUT COLORS TO BE SELECTED BY ARCHITECT FROM MANUFACTURER'S FULL COLOR RANGE.
- GROUT WIDTHS TO BE MANUFACTURER'S RECOMMENDED WIDTH UNLESS NOTED OTHERWISE.
- REQUIRED FLOORING UNDERLAYMENTS ARE TO BE PROVIDED AND INSTALLED BY THE FLOORING CONTRACTOR.
- COLUMNS WITHOUT DRYWALL FURRING ON PLANS ARE TO BE LEFT EXPOSED WOOD / STEEL.
- EXPOSED STEEL COLUMNS AND BEAMS TO BE PAINTED P-18 ON FLOOR 2 AND P-20 ON FLOOR 3.

SYMBOL LEGEND

CODED NOTE: SEE SCHEDULE ON THIS SHEET

P-1 MATERIAL FINISH NOTE. SEE SHEET A5-SERIES OF DRAWINGS AND SPECIFICATIONS



1 Floor Plan
3rd Floor, Finish Plan
A1.03-F1 1/4\" = 1'-0\"

